



Commercial  
Vehicles

# Accessories

**INCLUDES**



**Towing**

Pull bigger loads



**Security**

Keep it safe



**Protection**

Keep it smart

## INSIDE



**Drive in style**

Give your vehicle real road presence

**Keep in touch**

The latest high-tech gadgets



**Take a tour**

Get the most from your leisure time



# Create your ideal vehicle



## Great additions...

...for Caravelle, Caddy, Transporter and Crafter



**Up to 3 years' servicing  
on all new vans from £250.\***

**One decision you won't need to think about.**

**Ask us for more details.**

*LET'S GO TO WORK*



**Commercial  
Vehicles**

## Making the best even better

Your vehicle is a big part of your business, so you need to be sure it has all the right kit to do your job in a safer, efficient and more secure way. You may want it to be more flexible or to give it an aesthetic upgrade. Well, we have accessories to suit your business needs – whether you're a builder or electrician, a courier, or you're running a taxi or executive-travel service. And our dedicated network of Van Centres will help you to tailor your vehicle so it meets your business needs – perfectly.

### How to use this brochure

See something you like?  
For more information, just call  
your nearest Van Centre  
on **0800 717131**



# Contents

## Caddy 04

EXTERIOR	INTERIOR
06 Sport & styling	12 Technology
08 Touring	14 Styling
10 Towing	15 Safety & security
11 Protection	16 Protection



## Caravelle & Transporter 18

EXTERIOR	INTERIOR
20 Sport & styling	26 Technology
22 Touring	28 Styling
24 Towing	29 Safety & security
25 Protection	30 Protection



## Crafter 32

EXTERIOR	INTERIOR
34 Touring	38 Technology
36 Towing	39 Styling
37 Protection	40 Safety & security
	42 Protection



## Van care & merchandise

43 Aftercare products, key rings... and a cuddly toy

# The Caddy range

The Caddy is Volkswagen's smallest van. But its nifty dimensions don't restrict the features it can pack in

EXTERIOR	INTERIOR
06 Sport & styling	12 Technology
08 Touring	14 Styling
10 Towing	15 Safety & security
11 Protection	16 Protection



**Towbar**  
Choose a towbar to increase your load capability. p10

**Rear bumper cover**  
Help protect your rear bumper from daily wear and tear. p11



**16" Sima alloy wheel**  
6J x 16 alloy wheel. Requires 205/55 R16 tyre. p07



**Rhino roof rack**  
The raised sidebars of this roof rack ease the task of transporting bulky goods. p08

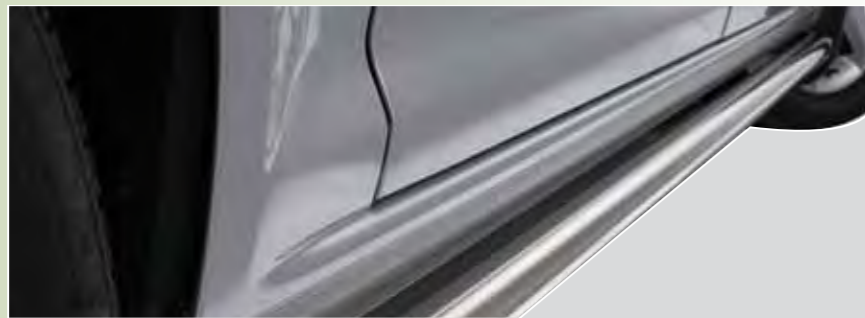


**Leather seats**  
Add class, comfort and durability with leather seats in single colour or two-tone. p14

**Side rails**  
Polished stainless-steel rails look good and protect sills. p06

# Sport & styling

Make your Caddy stand out from the crowd – give it a little individual flair with these stylish and sporty exterior accessories



### Side rails in polished stainless steel

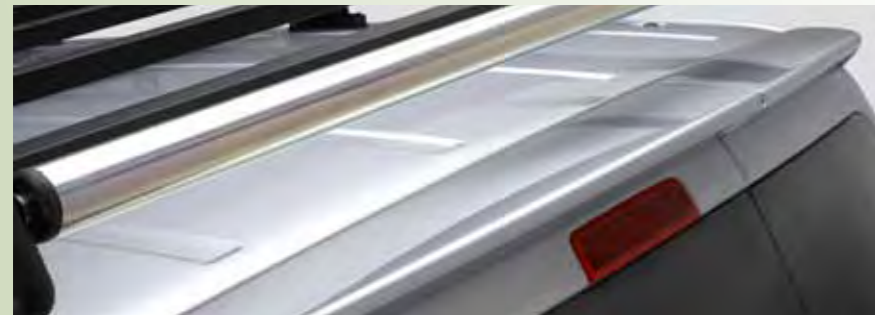
These rails not only look good, they also protect the sills from damage.

Available for both Caddy and Caddy Maxi



### Rear strip in polished stainless steel

Designed to add a stylish finish to models fitted with a tailgate.



### Rear spoiler

Add a touch of class to the rear of your van with a spoiler. Available in colours shown below.

Suitable only for vehicles with twin doors

#### Spoiler colours

Available in the colours shown, or primed ready for painting to match your vehicle colour

Reflex Silver

Diamond Black

Tornado Red



**15" Tangis alloy wheel**  
6.5J x 15 alloy wheel. Requires 195/65 R15 or 205/60 R15 tyre. Not suitable for the 2011 model onwards



**16" Sima alloy wheel**  
6J x 16 alloy wheel. Requires 205/55 R16 tyre.



**17" Sportline alloy wheel**  
7J x 17 alloy wheel. Requires 225/45Z R17 tyre.

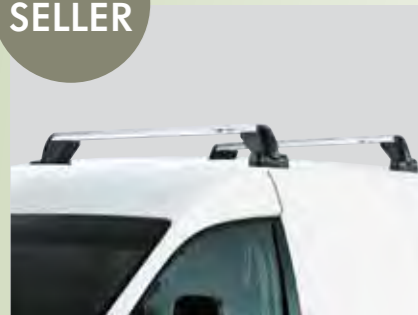
**The smart choice**  
Take pride in your van. Enhance its appearance with alloys and trim – and increase its resale value

# Touring

Add a few accessories to your Caddy and make loads more versatile space to carry the bigger things in life – for work and pleasure

**The key to carrying**  
Add a roof-bar set to your Caddy and you're ready to add extra roof accessories as soon as you need them

**BEST SELLER**



**Roof-bar set**

Adding roof bars to your van can boost your load capacity by 100kg. And if you use them with our roof-bar accessories, you can fine-tune your van to meet your needs.



**Angle brackets**

Fitted to a roof-bar set, these brackets are the easy solution for ladder transport.



**Thule Pacific roof box**

Add 320 or 370 litres of load space with the Thule Pacific roof box. You'll need the roof-bar set



**Rhino roof rack for the Caddy and Caddy Maxi**

The Rhino is tough, with raised sidebars and lots of lashing possibilities for transporting bulky goods easily and safely. Maximum roof-rack load: 67kg.

Warranty of one year only



**Load-bar set**

These load bars are lightweight and stable – and easy to fix on your roof rails, where the anti-theft locks keep them safe. Maximum load: 100kg.

Only for vehicles with factory roof rails. Cannot be used with the surfboard or kayak holder



**Front-window wind deflectors**

Lets you lower the window to improve air circulation without letting the rain blow in. They'll also help keep the sunlight out of your eyes.



**Pull-out ski and snowboard holder**

Pull out the extenders and suddenly it's much easier to load and unload your skis and snowboards. Holds six pairs of skis or four snowboards.

You'll need the roof-bar set



**Kayak holder**

Holds a kayak securely with minimum fuss – and there's no need for knots.

You'll need the roof-bar set



**Surfboard holder**

The surfboard holder has been designed to transport a surfboard and two masts. A set includes four mast holders (two per mast) and two tensioning straps.

You'll need the roof-bar set



**Towbar bike rack and extension**

Transport up to two bikes easily using lockable fastenings. An extension can be added for a third bike. Maximum load 50kg.

Maximum load also depends on your towbar being able to support 50kg



**Roof-bar-mounted bicycle holder**

One holder is pictured, but you can fit more than one on your roof bars (depending on bicycle size and weight).

You'll need the roof-bar set



**Reversing-aid kit**

Consists of four sensors, which can be painted to match the body colour of your vehicle. Can be used with the Caddy and Caddy Maxi detachable and fixed swan-neck towbars.

Not suitable for vehicles with fixed flanged towbars



**Headrest coat hanger**

Attaches easily to your headrest to keep your jacket safe and crease-free.

**BEST SELLER**

**Tailgate bicycle holder**

Designed for vehicles with a tailgate. It is quick and easy to install, and can carry up to three bikes and help keep them safe with its Anti-Theft Protection.



# Towing

The Caddy is small but powerful, and with a towbar you can increase your workload whenever you need to



### Towbar: fixed swan neck

Adding a fixed towbar will increase your load capability.

You'll need 13-pin towing electrics

### 13-pin towing electrics

Matches the control elements of your Caddy or Caddy Maxi precisely.



### Towbar: detachable swan neck

A detachable towbar lets you increase your load capability without making the towbar a permanent feature on your van.

You'll need 13-pin towing electrics

**Secret towbar**  
You don't need a permanent towbar, which can make it harder to park. A detachable unit is only there when you need it

# Protection

Hard-working vans can take a beating, but a few accessories will help keep your pride and joy looking on top form

BEST SELLER



### Front and rear mudflaps

Help protect your vehicle from whatever the road throws up. Available in pairs, so you can add them to either the front or rear – or have them fitted all round.



### Headlight protectors

A set of protectors also comes with two sets of adhesive decals that convert your headlight beams for driving on the Continent.

For guidance on the legislation covering driving abroad, please refer to the AA website: [www.theaa.com/motoring\\_advice/overseas](http://www.theaa.com/motoring_advice/overseas)



### Rear-bumper cover

Help protect your rear bumper from daily wear and tear.

# Technology

Your Caddy is your office on wheels, and with these great gadgets you can make and take calls safely, as well as navigate and be entertained



**BEST SELLER**

### Bluetooth® Touch Phone kit

Control your phone by voice or the 2.8-inch colour touchscreen – and have your texts and emails read out for you. The Bluetooth® Touch Phone kit uses your vehicle's audio system, so you can also listen to any music stored on your mobile. The radio/music is automatically turned down when you use your phone. All functions can be selected by voice as well as the touchscreen. It's the safe way to stay connected while you're on the road.

You'll need a Quadlock or ISO lead. Check price list for details



### Blueconnect hands-free system

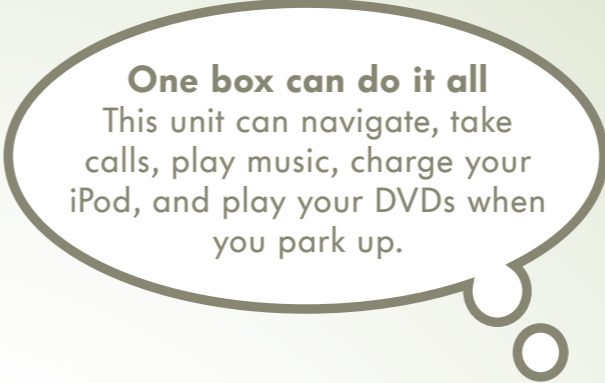
A voice-activated Bluetooth® phone system in your headliner lets you pair up to seven phones and store up to 32 names. Available in grey.

You'll need a Quadlock lead



### Nokia HF-310 portable Bluetooth® device

The Nokia HF-310 gives great speakerphone performance via Bluetooth®. It has an illuminated one-touch answer button, gives 30 hours of talk time, and is fitted via a suction-cup, sticky pad or clip.



**One box can do it all**

This unit can navigate, take calls, play music, charge your iPod, and play your DVDs when you park up.



### Kenwood Multimedia system

One piece of kit for navigation, handling phone calls, music or radio, and watching a DVD when you stop. The 7" hi-res touch-screen controls maps, track listings or a DVD. The maps cover all of Europe, and you can opt for voice directions. The Kenwood connects with your phone using Bluetooth® and can handle SMS text messages. You can even charge your iPhone/iPod while you control it, from either the Kenwood or steering-wheel controls if you have them.

SMS texting depends on your model of phone. You'll need an extra lead to connect your iPod or iPhone



**BEST SELLER**

### iPod adaptor

The iPod adaptor quickly and easily connects an iPod or iPhone to your vehicle's radio or radio/navigation system. Your system controls the iPod or iPhone, outputs the audio – and charges your device at the same time.



### Media-in unit

Want to connect your iPod or a USB stick full of MP3 music files? The Media-in unit lets you charge your iPod and control your music from your vehicle's audio system.

You'll need a Quadlock lead. In Caddy and Caddy Maxi vans you'll also need to upgrade the radio to the RCD 310, RCD 510 or RNS 510



### Radio Navigation system RNS 510

The RNS 510 can be controlled by voice or the 6.5" touch-screen display. You get great sound – from CDs, an SD card, iPod via the aux-in socket, or music on the 30GB hard drive. And when you stop, you can watch a DVD.



### Radio Navigation system RNS 310

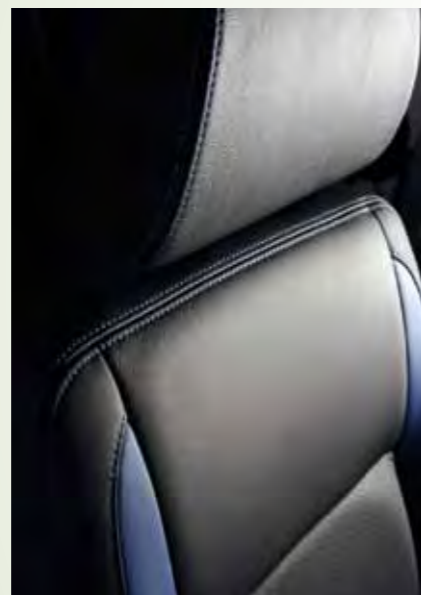
A 5" touch-screen shows your route in 3D perspective. This unit doubles as a radio and CD player, and there's an aux-in socket for your iPod. Put your maps on an SD card and you can play CDs while you navigate.

### Cage for single-DIN system

You'll need this if you replace the standard head unit with a single-DIN system.

# Interior styling

Working vans don't have to miss out on style. Leather seats add comfort and luxury as well as durability and ease of care



### Map pockets

Map pockets are standard on all leather packs for vehicles with more than three seats.



### Leather seats

Add a touch of luxury as well as durability and practicality to your vehicle with single-colour, smooth, high-quality leather with matching stitching and your choice of pillow-effect or flat cushioning.



### Leather seats Sport

Your choice of two-tone upholstery – with complementary colours in either the side 'fillet' panels or the mid-centre back and seat panels. With both designs, the stitching is in the contrasting colour. You choose between flat or pillow-effect cushioning.

**More than style**  
Leather isn't just about style – it's also durable, easy to keep clean and lifts the class, quality and comfort of your cabin to another level

# Safety & security

These extras will help keep you safer, give you peace of mind – and keep your load secure



### Safety kit

Gives you peace of mind in any roadside emergency. Includes a first aid kit, warning triangle on metal stand, and a lightweight fluorescent orange safety vest so you're easily seen.



### Solid rear-window guards

Increase the security in your rear load space by adding solid rear-window guards. Ideal for keeping your load away from prying eyes.



### Ratchet net

Secure heavy objects in accordance with DIN and EN standards. This nylon and steel net fixes to lashing eyes, and the load is tightened down using a cross-belt with ratchet. Net length can be adjusted using clamps on the belt. Net size: 900 x 500mm.



### Luggage net

Make sure your luggage and loose items stay in place while you drive. This net uses the load-lashing rings on the floor of your van.

Now available in the Caddy Maxi



### Load-separator grille and load-dividing grille

These accessories prevent forward and sideways movement of luggage. Available as just the separator grille or with the dividing grille as well.

### ALSO AVAILABLE

#### Anti-theft wheel bolts

A set of four bolts with a key and identification codes.

Not illustrated

#### Mesh rear-window guards

Make your rear load space more secure with mesh rear-window guards – without losing your view out of the rear window.

Not illustrated

#### Alarm system

This alarm comes in three parts for maximum security: an alarm module, alarm harness and load-area sensor.

Not illustrated



# Protection

We've designed these extras to protect the interior of your van – so you can relax, knowing it can cope with a life of hard knocks

**BEST SELLER**



### Waterproof seat covers

Protect your seats from wet and dirt with these removable waterproof seat covers.

Only available for driver and front-passenger seats. Not suitable for vehicles with side airbags



**BEST SELLER**

### Door sill trim plates

This black film with silver-coloured strips makes the entrance of your Caddy look even better and protects it against scratches. Easy to stick to the front and rear door sills. Two films in each kit.



### Front carpet mats Rear carpet mats

Protect the floor of your van with these carpet mats in anthracite or art grey.

Rear mats not illustrated. Art grey available on Caddy 2004 to May 2007 only

**BEST SELLER**



### Front rubber mats

Protect the floor of your van up front with these durable rubber mats. Fixings are included.



### Plylining kits

We offer a full range of high-quality plylining kits.

#### Key features

- Premium-grade plywood: 9mm for the floor and boxed wheel arches, 6mm for the sides
- Materials are sourced only from suppliers accredited by the Timber Trade Federation. For more information go to [www.ttf.co.uk](http://www.ttf.co.uk)
- Kits are machine cut for an accurate fit that's specific to your van
- The sealing on all joints stops any liquid or dust and dirt seeping through or collecting

Image for illustration purposes only



### Flexible bootliner

Versatile protection for your load area that you can take out and store easily as required.

Available on the Caddy window van and Caddy Maxi Life only



### Flexible loadliner

This practical loadliner is washable and has a non-slip, acid-resistant surface. The raised rim (about 50mm) helps to contain any spillages.

Available on the Caddy window van with kombi seats and Caddy Maxi Life



### Rigid loadliner

A robust loadliner with strong, high sides and cross corrugations for added strength. Available for the full load area and for vans with the kombi seat pack.



**Save on cleaning**  
With some loads, it's a lot cheaper to keep spills off your van in the first place than it is to clean up afterwards

# The Caravelle & Transporter range

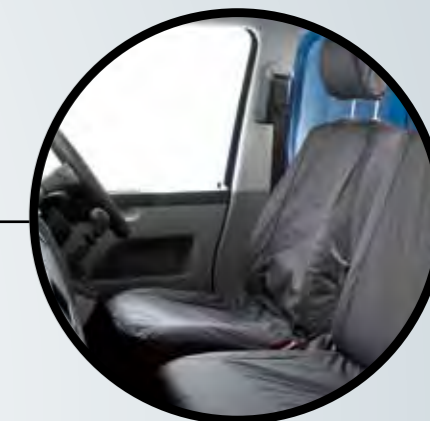
With these accessories, Volkswagen's original vehicle can be honed into your perfect workmate

EXTERIOR	INTERIOR
20 Sport & styling	26 Technology
22 Touring	28 Styling
24 Towing	29 Safety & security
25 Protection	30 Protection

The accessories in this section are for every type of Transporter – including the Caravelle and the Shuttle

## Navigation

Keep your eyes on the road and out of the map book with a range of navigation systems. p27



## Waterproof seat covers

Keep moisture and dirt off seats with removable covers. p30

## Headlight protectors

Protect your headlights – and convert the beams for driving on the Continent. p25

## Front spoiler

Redefine the front of your van with a lower front spoiler. p20

## Bike racks

Carry up to four bikes on the back. p23



## Alloy wheels

A set of alloys can add class to your van and boost its resale value. p21

## Side rails

Polished stainless-steel rails look good and protect your sills. p20



# Sport & styling

Make your vehicle stand out from the crowd – give it a little individual flair with these stylish and sporty exterior accessories

**BEST SELLER**



### Side rails in polished stainless steel

These rails not only look good, they also protect the sills from damage.

Available for both short-wheelbase and long-wheelbase vans



### Polished stainless-steel tailgate trim

Finish off your van's polished signature with this skirt.

Also available for twin doors



### Lowering springs

Optional suspension springs to lower your van by 30mm.

For front axle weight up to 1,550kg or 1,710kg



### Rear twin-door spoiler

Add a touch of class at the back with a spoiler. Available in colours below.

Only for vehicles with twin doors



### Rear tailgate spoiler

Add a rear tailgate spoiler for a sporty look. Available in colours below.

Only for vehicles with a tailgate



### Front spoiler

Add a front spoiler. Available in colours below or primed for painting to match your vehicle colour.

#### Spoiler colours

Available in the colours shown, or primed ready for painting to match your vehicle colour

Reflex Silver

Deep Black

Candy White

**BEST SELLER**



### 16" Sima alloy wheel

6J x 16 alloy wheel. Requires 205/55 R16 tyre.



### 16" Tangis alloy wheel

6.5J x 16 alloy wheel. Requires 215/65 R16 tyre.



### 17" Suez alloy wheel

7.5J x 17 alloy wheel. Requires 235/55 R17 tyre.



### 18" Dakar alloy wheel

8J x 18 alloy wheel. Requires 235/50 R18 tyre.



### 18" Sportline alloy wheel

8J x 18 alloy wheel. Requires 235/50 R18 tyre.

Tyre not included. Not suitable for vehicles with 180PS engines. Suitable for T32



### 18" 5-Spoke Sportline Brilliant Silver alloy wheel

8J x 18 alloy wheel. Requires 235/50 R18 tyre.

Tyre not included. Suitable for T32. Wheel-bolt covers available separately; please ask your Van Centre



### 18" Dakar Bi-Colour alloy wheel

8J x 18 alloy wheel requires 235/50 R18 tyre.

Tyre not included

# Touring

If you need to boost your luggage or load capacity, take a look at these versatile accessories – for work and pleasure

BEST SELLER



### Roof-bar set

Adding roof bars to your van can boost your load capacity by 100kg. And if you use them with our roof-bar accessories, you can fine-tune your van to meet your needs.



### Angle brackets

Used with the roof-bar set, these angle brackets offer the perfect solution for ladder transport.



### Thule Pacific roof box

Add 320 or 370 litres of load space with the Thule Pacific roof box. You'll need the roof-bar set



### Rhino roof rack

The Rhino is tough, with raised sidebars and lots of lashing possibilities for transporting bulky goods easily and safely. Maximum roof-rack load: 105kg.

For vans with or without factory roof preparation



### Single roof bar

Add an extra roof bar if your van has a long-wheelbase and add to your load space.

For use with roof-bar set



### Front-window wind deflectors

Lets you lower the window to improve air circulation without letting the rain blow in. They'll also help keep the sunlight out of your eyes.



### Pull-out ski and snowboard holder

Pull out the extenders and suddenly it's much easier to load and unload your skis and snowboards. Holds six pairs of skis or four snowboards.

You'll need the roof-bar set



### Kayak holder

Holds a kayak securely with minimum fuss – and there's no need for knots.

You'll need the roof-bar set



### Surfboard holder

The surfboard holder has been designed to transport a surfboard and two masts. A set includes four mast holders (two per mast) and two tensioning straps.

You'll need the roof-bar set



### Towbar bicycle rack and extension

Transport up to two bikes easily using lockable fastenings. An extension can be added for a third bike. Maximum load 50kg.

Maximum load also depends on your towbar being able to support 50kg



### Roof-bar-mounted bicycle holder

One holder is pictured, but you can fit more than one on your roof bars (depending on bicycle size and weight).

For use with slotted roof bars only

BEST SELLER

### Tailgate bicycle holder

Designed for vehicles with a tailgate. It is quick and easy to install, and can carry up to four bicycles (with a 60kg load limit).

Cannot be fitted if you have a spoiler on your roof edge or tailgate



# Towing

Boost your load capacity with a towbar – permanent or removable, for hauling an extra load or carrying bikes

**BEST SELLER**



### Towbar: detachable swan neck

A detachable towbar lets you increase your load capability without making the towbar a permanent feature on your van.

You'll need 13-pin towing electrics

### 13-pin towing electrics

Pre-assembled for fitting to a towing hitch and can be used with fixed and detachable towbars. Transporter and Caravelle towing electrics work with ESP and trailer stability assist to keep you safe on the road.



### Towbar: fixed swan neck

Adding a fixed towbar will increase your load capability.

You'll need 13-pin towing electrics



### Towstep jaw, pin and ball

For use with two-bolt flange towbars.

### Towbar: two-bolt flange

Two-bolt flange for a towbar system.  
Not to be used with reversing sensors

# Protection

Limit the impact of daily wear and tear so your vehicle stays looking good and holds its value

**BEST SELLER**



### Rear-bumper cover

Help protect your rear bumper from daily wear and tear.

**Get covered**  
With all those loads going in and out, you need a cover to keep your bumper looking good



### Headlight protectors

A set of protectors also comes with two sets of adhesive decals that convert your headlight beams for driving on the Continent.

For guidance on the legislation covering driving abroad, please refer to the AA website: [www.theaa.com/motoring\\_advice/overseas](http://www.theaa.com/motoring_advice/overseas)



**BEST SELLER**

### Front and rear mudflaps

Help protect your vehicle from whatever the road throws up. Available in pairs, so you can add them to either the front or rear – or have them fitted all round.

# Technology

Your vehicle is your office on wheels, and with these great gadgets you can make and take calls safely, as well as navigate and be entertained

**Which nav?**  
 These navigation systems offer different services: one plays music, another plays DVDs as well, one does all this and connects with your phone



**Blueconnect hands-free system**  
 A voice-activated Bluetooth® phone system in your headliner lets you pair up to seven phones and store up to 32 names. Available in grey. You'll need a Quadlock interface lead



**Nokia HF-310 portable Bluetooth® device**  
 Gives great speakerphone performance via Bluetooth®. Illuminated one-touch answer button and 30 hours of talk time. Fitted via a suction cup, sticky-pad or clip.

**BEST SELLER**

**Bluetooth® Touch Phone kit**  
 Control your phone by voice or the 2.8-inch colour touchscreen – and have your texts and emails read out for you. This kit uses your vehicle's audio system, so you can also listen to music stored on your mobile. The radio/music is automatically turned down when you use your phone. All functions can be selected by voice as well as the touchscreen. It's the safe way to stay connected while on the road. You'll need a Quadlock or ISO lead. Check price list for details



**Kenwood Multimedia system**  
 Why bother with multiple gadgets when you can get one piece of kit for calls, music or radio, navigation and watching a DVD when you're parked up? This system has a superb 7" hi-res display with touchscreen controls. The maps cover all of Europe, and you can opt for voice directions. The Kenwood connects with your phone using Bluetooth® and can handle SMS text messages. You can charge your iPhone/iPod while you control it from the Kenwood – or from steering-wheel controls if you have them. An SD slot lets you upgrade your maps.



**iPod adaptor**  
 The iPod adaptor quickly and easily connects an iPod or iPhone to your vehicle's radio or radio/navigation system. Your system controls the iPod or iPhone, outputs the audio – and charges your device at the same time.



**Media-in unit**  
 If you want to connect your iPod or a USB stick full of MP3 music files, you'll need the Media-in unit. It lets you navigate track listings using your vehicle's audio system, and your iPod is charging while it's connected. You buy cables separately to give you all and only the connections you need.



**Radio Navigation RNS 510**  
 Can be controlled by voice or the 6.5" touch-screen. The eight speakers give great sound – from CDs, an SD card, iPod via the aux-in socket, or music on the 30GB hard drive. And when you stop, you can watch a DVD. Maps for Western Europe available separately.



**Radio Navigation system RNS 310**  
 A 5" high-res touch-screen shows routes in 3D. It doubles as a radio and CD player, and there's an aux-in socket for your iPod. You can load maps on an SD card and play CDs or MP3 files from the SD card while you navigate.



**Rosen overhead DVD player**  
 Play DVDs, CDs, MP3s. The 10.2" flat-panel LCD screen gives ultra-crisp images. It also features 25 video games with wireless controller and an auxiliary mini-jack with RCA adaptor to connect a games console, video camera or MP3 player. The unit is mounted in the headlining behind the front seats.

# Interior styling

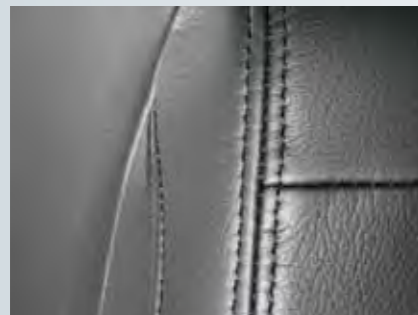
Add comfort and style with leather seats and enjoy the durability this material is famous for, and adapt your storage too

**Choose leather**  
Leather isn't just about style – it's also durable, easy to keep clean and lifts the class, quality and comfort of your cabin to another level



### Map pockets

Map pockets are standard on all leather packs for vehicles with more than three seats.



### Leather seats

Add a touch of luxury as well as durability and practicality to your vehicle with single-colour, smooth, high-quality leather with matching stitching and your choice of pillow-effect or flat cushioning.

### Leather seats Sport

Your choice of two-tone upholstery – with complementary colours in either the side 'fillet' panels or the mid-centre back and seat panels. With both designs, the stitching is in the contrasting colour. You choose between flat or pillow-effect cushioning.



### Multiflex board

Divides your Caravelle storage space into two levels, quickly and easily.

# Safety & security

Your safety is our priority, which is why we're offering these essential extras



### Safety kit

Gives you peace of mind in any roadside emergency. Includes a first aid kit, warning triangle on metal stand, and a lightweight fluorescent orange safety vest so you're easily seen.



### Load securing net

The length of the luggage net can be adjusted using the clamp locks, and the load is secured using the ratchet. You can fix to load-lashing rails using four lashing eyes (as shown) or the rings provided as standard.



### Ratchet net

Secure heavy objects in accordance with DIN and EN standards. This nylon and steel net fixes to lashing eyes, and the load is tightened down using a cross-belt with ratchet. Net length can be adjusted using clamps on the belt. Net size: 900 x 500mm.



### Luggage net

Make sure your luggage and loose items stay in place while you drive. This net uses the load-lashing rings on the floor of your van.



### Full-length load separator grille/dog guard

This grille stops your load moving forward and keeps animals safely in the back. The dog guard separator also keeps your dog off your cargo.

You'll need a full-length separator grille if you install it at the C-pillar (above)



### Reversing aid kit

Consists of four sensors, which can be painted to match the body colour of your vehicle.

Not suitable for vehicles with fixed flanged towbars

### ALSO AVAILABLE

#### Anti-theft wheel bolts

A set of four bolts with key and identification codes.

#### Anti-theft spare-wheel bolt

Help keep your spare wheel safe by adding an anti-theft spare-wheel bolt.

#### Alarm system

This alarm comes in three parts for maximum security: an alarm module, alarm harness and load-area sensor. Not illustrated

# Protection

Here's a range of accessories designed to help the interior of your vehicle withstand the rigours of life on the road

**BEST SELLER**



### Waterproof seat covers

Protect your seats from wet and dirt with these removable waterproof seat covers.

### Stay dry

You spend a lot of time in your van. Keeping the inside clean and dry lets you focus on your work



### One-piece front carpet mat

Protect your cabin floor with this front carpet mat for vans with dual passenger seat. Available in grey.

### ALSO AVAILABLE

- Two-piece front carpet mat
- Rear carpet mats



### Sportline mats

Protect your van's interior with Sportline carpet mats. The stylish two-piece set comes in black with red stitching and the Sportline logo.



### Front rubber mats

Protect the floor of your van up front with these durable rubber mats. Fixings are included.



### Monster mats

The deep channels in these heavy-duty mats stop liquids and dirt spilling onto the cab floor.



### Flexible bootliner

This liner is light, flexible and perfectly shaped to fit the contours of your boot. Its high edge (about 5cm) protects against moisture and dirt, and the integrated diamond pattern stops objects sliding around. Rolls away to save space.



### Semi-rigid bootliner

Fits perfectly to the shape of your vehicle and is washable, anti-slip and acid resistant. Its high edge (about 4cm) protects against moisture and dirt, and the integrated triangular pattern stops loads slipping around.



### Foldable bag

This high-quality bag makes your load area more flexible and keeps items secure during transit. The integrated straps attach to your van's lashing points, and the bag folds away neatly when not in use.

**BEST SELLER**



### Plylining kits

We offer a full range of high-quality plylining kits.

#### Key features

- Premium-grade plywood: 9mm for the floor and boxed wheel arches, 6mm for the sides
- Materials are sourced only from suppliers accredited by the Timber Trade Federation. For more information go to [www.ttf.co.uk](http://www.ttf.co.uk)
- Kits are machine cut for an accurate fit specific to your van
- The sealing on all joints stops any liquid or dust and dirt seeping through or collecting

Image for illustration purposes only



### Motexion window bulkhead

Precision moulded for an exact fit, with a Perspex window so you can see the load area from the cab. Carpeting on the cab side keeps in the heat and cuts down on road noise.

Only for Transporter panel vans with a single sliding door

### Motexion kombi bulkhead

Precision moulded for an exact fit behind the bench seat, and with a Perspex window onto the load area. Carpeting on the cab side keeps in the heat and cuts down on road noise.

Only for Transporter kombi with a single sliding door

### Motexion windowless bulkhead

Precision moulded for an exact fit.

Only for Transporter panel vans with a single sliding door



# The Crafter range

Think your Crafter works hard already? Beef it up with these accessories and find out what it's really capable of

**AUX-in adaptor**  
Connect your MP3 player to your radio or navigation system.  
p38



## EXTERIOR

- 34 Touring
- 36 Towing
- 37 Protection

## INTERIOR

- 38 Technology
- 39 Styling
- 40 Safety & security
- 42 Protection



**Roof rack**  
Increase your load capacity by as much as 262kg with this roof rack.  
p35

**Front and rear mudflaps**  
Protect your vehicle from what the road throws up.  
p37



**Waterproof seat covers**  
Protect your seats from wet and dirt, and take the covers off if you don't need them.  
p42

**Headlight protectors**  
Protect your headlights – and convert the beams for driving on the Continent.  
p37



# Touring

Whatever your Crafter has to carry, there's an accessory to make life easier – and protect your van and its paintwork from awkward loads



### Roof-bar set

Adding roof bars to your van can increase your load capacity by 300kg (660lb) for a standard roof, or 150kg (330lb) for a high roof. Each set comes with three roof bars.

Requires factory roof preparation



### High angle-bracket set

Transport long and awkward objects securely with high angle-brackets. You get a set of four, made of galvanised-steel. They attach easily and give you 180mm of vertical support.

You'll need roof bars or a roof rack

**Make the roof work**  
There's a lot of space on the top of your van, and a roof rack or bars will let you use it – and add even more roof accessories



### Front-window wind deflectors

Lets you lower the window to improve air circulation without letting the rain blow in. They'll also help keep the sunlight out of your eyes.



### Roof rack

The roof rack is powder coated to protect it against corrosion and weathering. It'll increase your load capacity by up to 262kg, depending on your van's wheelbase and height.

Requires factory roof preparation



### Single roof bar

Add to your roof-bar set (shown opposite) to help you transport long and bulky objects. Up to six roof bars can be fitted.

Requires factory roof preparation



### Roof access ladder

This handy ladder folds out and hooks on the roller at the back of your van or the luggage rack at the side. It comes with a fastener and tensioning strap so you can hang it on the side wall. Your sliding door isn't affected, even when the van is fully loaded.



### Roof ladder roller

This light running roller makes it easy to load bulky cargo onto the roof of your van. Place furniture or ladders on the roller then simply push forward. The roller feeds the load onto the roof without scratching the paint or damaging your roof bars or rack.

You'll need roof bars or a roof rack

### Ladder-holder set

The four angle-brackets mount easily on either side of the ladders. The rung clamp fixes the ladders to the rail, then two tensioning belts lock the ladders in place to keep them safe and quiet.

You'll need roof bars or a roof rack



# Towing

What do you do when there isn't enough room inside and your load won't go on the roof? Fit a towbar and you'll always be able to pull it along behind you



### Towbar – fixed

Adding a fixed towbar will increase the load capacity of your Crafter. The towball is available in two sizes and is sold separately.

You'll need 13-pin towing electrics and a towball

### Towbar – four-bolt flange

Towbar for Crafter Chassis Cab CR46 and CR50.

Can't be used with a factory full-width step

### 13-pin towing electrics

Matches the control elements of your Crafter precisely.

# Protection

Hard-working vans can take a beating. These accessories help keep your pride and joy looking good



### Front and rear mudflaps

Help protect your vehicle from whatever the road throws up. Available in pairs, so you can add them to only the front or rear – or fit them all round.



### Headlight protectors

Each pair comes with two sets of adhesive decals that convert your headlight beams for driving on the Continent.

For guidance on the legislation covering driving abroad, please refer to the AA website: [www.theaa.com/motoring\\_advice/overseas](http://www.theaa.com/motoring_advice/overseas)

### Dirt damage

Mud flaps don't just keep your van clean, they also shield your paintwork from the stones and abrasive dirt that can kick up from your wheels

# Technology

Your Crafter is your office on wheels, and with these great high-tech gadgets you can make and take calls safely, and navigate and be entertained, too



**BEST SELLER**

### Bluetooth® Touch Phone kit

Control your phone by voice or the 2.8-inch colour touchscreen – and have your texts and emails read out for you. This kit uses your vehicle's audio system, so you can also listen to music stored on your mobile. The radio/music is automatically turned down when you use your phone. All functions can be selected by voice as well as the screen. It's the safe way to stay connected while you're on the road. You'll need a Quadlock or ISO lead. Check price list for details



### Blueconnect hands-free system

Get a voice-activated Bluetooth® phone system in your headliner so your phone automatically connects up in your van. Seven phones can be paired. You'll need a Quadlock lead

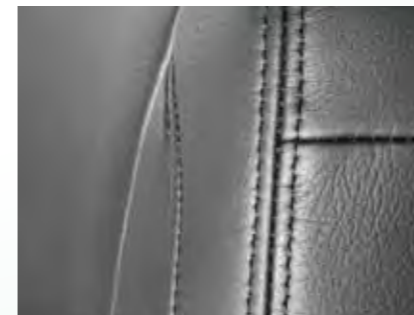


### AUX-in adaptor

This adaptor will connect your MP3 player to your radio/navigation system. Works with the RCD 2001 radio, RCD 4001 radio, RNS 4001 navigation system, and RNS 5001 navigation system.

# Interior styling

The Crafter may be best suited to hard, heavy work – but you can still add a touch of luxury



### Leather seats

Single-colour leather with a smooth and high-quality finish. Matching stitching, and your choice of pillow-effect or flat cushioning.

### Leather seats Sport

Your choice of two-tone upholstery, with either the side 'fillet' panels or the mid-centre back and seat panels in complementary colours. Both designs are stitched in the contrasting colour. You can also choose between flat or pillow-effect cushioning.

**More than style**  
Leather isn't just about style – it's also durable, easy to keep clean and lifts the class, quality and comfort of your cabin to another level

# Safety & security

You'll add even more load-lugging capability to your Crafter with Volkswagen's preferred partner **Sortimo**



### Sortimo lashing strap with clamp lock

These Sortimo tie-down belts come with integrated lashing eyes that lock into the load-lashing rails or the single lashing point. The clamp lock is then used to secure the load.



### Sortimo lashing strap with ratchet

These Sortimo tie-down belts come with integrated lashing eyes that lock into the load-lashing rails or the single lashing point. The ratchet is then used to secure the load.



### Sortimo square-mount pack

Designed to fix a pallet or similar load to reduce the risk of cargo moving around the load area. Easily secured to the floor or side load-lashing rails. Two mounts per pack.



### Sortimo lashing eye

The lashing eye can be used as shown, slotted and locked into a load-lashing rail, or with a single lashing point.



### Sortimo load-securing net

The length of the luggage net can be adjusted using the clamp locks, and the load is secured using the ratchet. You can fix to load-lashing rails using four lashing eyes (as shown) or the rings provided as standard.



### Sortimo single-lashing-point pack

The fitting point attaches to the cargo bars so you can attach lashing straps securely. Two fitting points per pack.

You'll need cargo bars



### Sortimo aluminium cargo bars

Keep your cargo secure with these (horizontal) cargo bars. Available for vans with a standard roof, high roof and crossbars. Two bars per pack.

You'll need load-lashing rails in the floor, roof and side of your van



### Sortimo load-lashing rails for roof pack

These (vertical) rails attach to the crossbeams in the roof of your van. Used with the floor rails, they'll let you place a cargo bar in almost any position. One rail per pack.



### Reversing-aid kit

Includes four sensors that can be painted to match your van's paintwork.

Not suitable for vehicles with fixed flanged towbars



### Safety kit

Gives you peace of mind in any roadside emergency. Includes a first aid kit, warning triangle on metal stand, and a lightweight fluorescent orange safety vest so you stay seen.

### ALSO AVAILABLE

#### Front parking-aid kit

With sensors that can be painted to match your van's paintwork.

**Sensors make sense**  
Safety is essential when you're reversing your van – and these sensors also help you get into those tricky spaces

# Protection

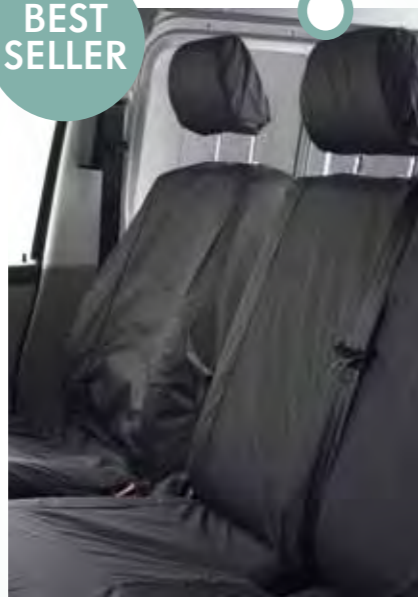
Maintain the resale value of your van by looking after the interior and keeping it protected

**Save on cleaning**  
With some loads, it's a lot cheaper to keep spills off your van in the first place than it is to clean up afterwards

**BEST SELLER**



**BEST SELLER**



### Plylining kits

- Premium-grade plywood: 9mm for the floor, 6mm for the sides
- All materials from accredited Timber Trade Federation suppliers
- Kits machine cut for an accurate fit
- Sealed joints stop liquid, dust and dirt seeping through or collecting

Image for illustration purposes only

### Waterproof seat covers

Protect your seats from wet and dirt with these removable waterproof seat covers.



### Full load rigid loadliner

This anti-slip loadliner makes the floor of your vehicle safer and protects it from damage and dirt.

Not suitable for vehicles with plylining



### Front carpet mats

High-grade carpet mats styled to fit the Crafter. Available for the left side, centre and right side.



**BEST SELLER**

### Front rubber mats

Protect the floor of your van up front with these durable rubber mats. Fixings are included.

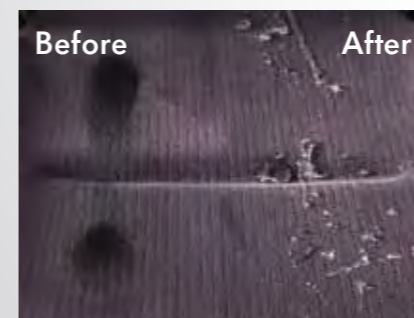
# Van care & merchandise

All you need to keep your vehicle pristine – and extras for a proud Volkswagen driver, from a camper van memory stick to a cuddly toy



### Van-care products

Leather treatment kit, interior trim cleaner, insect remover and glass cleaner, alloy-wheel cleaner, wash and wax shampoo, new van balm and wax, screenwash and de-icer.



### Autoglym LifeShine

A series of treatments is applied by your Volkswagen Van Centre: paintwork gets a protective coating to enhance the shine and maximise resistance to the elements; a durable waterproof coating is applied to upholstery and carpets to seal out moisture and resist staining; the outside of the side and rear windows gets an easy-to-clean coating so water runs off easily. And you get a complimentary care kit (above).

Comes with a comprehensive lifetime warranty subject to reasonable ongoing care



### Valet pack

Chamois, sponge, insect sponge and demist pad.

**Did you know?**  
The modern Transporter and the Samba bus loved by the hippie movement are both descended from the original 1947 van



**Model Transporter van**  
Our best-selling van in miniature. Take home a 1:87 model of your Transporter in Salsa Red.



**Model T1 Samba bus**  
A model Volkswagen camper van made to 1:43 scale.



**Model Transporter van**  
Our best-selling van in miniature. Take home a 1:87 model of your Transporter in Candy White.



**Model T2 Camper van in Ulmen Green**  
From 1967 to 1970 the T2a camper with Westfalia expansion and a small lift roof was the van of choice for those on the move. Now you can own a model version to 1:43 scale.



**Model T2 Pickup in Neptune Blue**  
The van as a pickup. In the 1970s, hundreds of thousands of tradesmen and gardeners drove these. Own your own version to 1:43 scale.



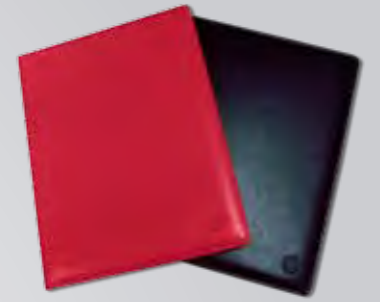
**Model T3 Camper van Joker in Bamboo Yellow**  
The T3 camper offered everything a globetrotter needed – including a kitchen. Part of the Volkswagen Classic models series to 1:43 scale.



**Card holder**  
Embossed with the Volkswagen roundel. Available in black, red and turquoise.



**Business-card organiser**  
Embossed with the Volkswagen roundel. Available in black, red and turquoise.



**A4 conference folder**  
Embossed with the Volkswagen roundel. Available in black, red and turquoise.



**Leather wallet**  
Embossed with the Volkswagen roundel on the lower-right front.



**Thermo mug**  
Keeps hot drinks warm and cold drinks cool. With the Volkswagen roundel.



**Steiff teddy bear in dark brown**  
Soft and cuddly plush bear with the Steiff button in its ear, blue satin scarf and a special Volkswagen chest mark. Guaranteed to conquer hearts large and small.



**2GB USB Camper memory stick**  
Portable memory for computer files, available in blue and red.



**Enamel Volkswagen key ring**  
A key ring with the Volkswagen roundel finished in enamel. Available in 38mm or 35mm versions.



**Silver Volkswagen key ring**  
A 35mm key ring with the Volkswagen roundel attached.



**Retro mug: T1**  
Toast the T1 every time you make a brew with this retro 'splitter' mug.



**Volkswagen tie**  
Look the business in these stylish Volkswagen ties. Available with a black and grey stripe or blue and grey stripe.



**Camper van money box – Freedom**  
Save your pennies in 'splitter' style with a touch of 1960s freedom.



**Men's chronograph watch**  
The new Volkswagen watch has a tough stainless-steel case, domed glass lens, raised logo and soft-but-tough sports strap. Water resistant to 10 atmospheres, it comes in a luxurious black gift box.



**Silver Volkswagen cufflinks**  
Add style and elegance to every occasion with our cufflinks range. Available in blue-and-white enamel or silver for a more discreet look. A great gift for any Volkswagen enthusiast.



**Camper van money box – Orange**  
Save your pennies in 'splitter' style with a hint of hot surf action.



**Camper van money box – Pink**  
Save your pennies in 'splitter' style – and build up a little flower power.

**Did you know?**  
The earliest Volkswagen camper vans are known as 'splitters' because of their split windscreen – which gave them a smile



**Children's hoodie in blue or pink**  
Great for the young enthusiast, with a print design on the back, zip and two front pockets. Available in sizes 4-5y, 6-7y and 8-9y.



**Children's T-Shirt in blue or pink**  
These great T-shirts come in blue or pink and co-ordinate with the hoodie, using the same print design. Available in sizes 2-3 years, 4-5y, 6-7y and 8-9y.

**Baby bib in blue or pink**  
These baby bibs deliver their important message with a camper-van logo. Available in one size.

**Retro baby T-shirt in blue or pink**  
This great baby T-shirt in blue or pink features the chassis logo on the front and co-ordinates with the hoodie. Available in three sizes: 3-6 months, 6-12m and 12-18m.



**Babygrow in blue or pink**  
Striped baby grow in blue or pink with slogan and chassis logo. Available in sizes 0-3 months, 3-6m and 6-12m.

**Baby hoodie in blue or pink**  
This great baby hoodie in blue or pink features the chassis logo on the back, zip and two front pockets. Available in sizes 3-6 months, 6-12m and 12-18m.



# Six more good reasons to buy a Volkswagen...

## 1 Dedicated Van Centre network

Our network is spread throughout the UK and forms the backbone of everything we do for you. Week in, week out, our Van Centres provide vital technical support and practical back-up for everything relating to Volkswagen vans. This vast reservoir of know-how and array of technical ability are always on hand whenever you need them.

We're constantly improving and extending our range of services and improving opening hours to meet your needs. After all, you want your vehicle serviced at the most convenient time, and we understand that downtime equals lost income.

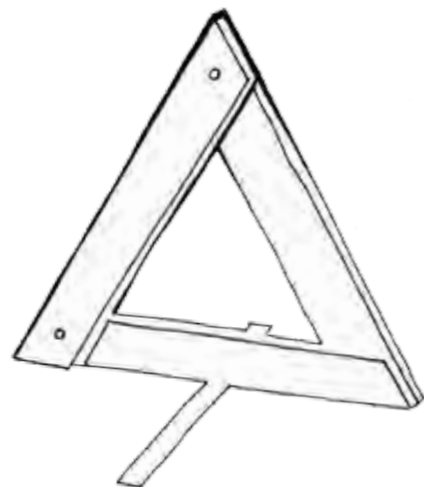


## 2 Volkswagen Roadside Assistance

Every new Volkswagen comes with a comprehensive, unlimited-mileage recovery and assistance package that's available across the UK and Europe for a full three years – and it operates 24 hours a day, 365 days a year. Fully trained technicians will diagnose and repair most problems at the roadside, using Volkswagen equipment and parts. For more information, ask your nearest Van Centre for a Volkswagen Roadside Assistance handbook.

## 3 We can help with vehicle finance

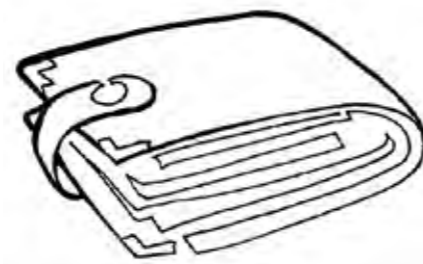
Volkswagen Commercial Vehicle Finance offers a dedicated



service to meet the needs of both the business user and private motorist. Your local Van Centre can help you choose the right type of finance package to meet your specific requirements. Please ask for details.<sup>1</sup>

## 4 Volkswagen servicing

The LongLife Service regime is so called because there are no set intervals between services.



### Service intervals for your diesel engine

The intervals between services will vary depending on how you drive your vehicle and the conditions of use. There are, however, maximum time and distance parameters set, and if the service light hasn't already come on it will do so when either the maximum mileage or time limit has been reached.

The maximum mileage/time parameters vary by model. For more detailed information on LongLife Service regimes and their suitability for your requirements, please contact your local Van Centre.

If you'd like a more traditional service regime, your vehicle can be adapted by your authorised Volkswagen Van Centre or Van Service Centre to the Time/Distance regime. This can be done when you buy the vehicle or when an inspection service is carried out.

On the Time/Distance regime, an oil change is required every 10,000 miles for Caddys and new Transporters, and every 12,500 miles for Crafters.<sup>2</sup>

### High quality parts

When you fit replacement parts to your vehicle, you need to know they'll stand the test of time. Volkswagen Original Parts<sup>®</sup> are constructed to the highest standards, are cheaper than you may think and are widely available from the Volkswagen Group's massive national distribution centre.

## 5 Vehicle insurance gets you covered

We want you to start enjoying your new van from day one – and you can, thanks to the complimentary seven-day cover from Volkswagen Commercial Vehicle Insurance.

Call free on 0800 316 7896 (lines open Monday to Friday 8am-9pm, Saturday 9am-5pm), provide a few details, and a cover note will be sent to your Van Centre. They will tax your vehicle and you can drive it away.

Visit [www.insurewithvwcv.co.uk](http://www.insurewithvwcv.co.uk) to see all our insurance products, get a quote or buy online. All our insurance products are designed to ease the pain of making a claim.

Volkswagen Commercial Vehicle Insurance is a trading name of Volkswagen Insurance Service (Great Britain) Limited, an appointed representative of Volkswagen Financial Services (UK) Limited, Brunswick Court, Yeomans Drive, Blakelands, Milton Keynes MK14 5LR. Registered in England number 2835230. Volkswagen Commercial Vehicle Insurance is sold, underwritten and administered by Allianz Insurance plc registered in England number 84638. Registered office 57 Ladymead, Guildford, Surrey GU1 1DB. Volkswagen Financial Services (UK) Limited and Allianz Insurance plc are authorised and regulated by the Financial Services Authority. Volkswagen Financial Services (UK) Limited and Allianz Insurance plc are not part of the same corporate group.



## 6 Warranties for peace of mind

It's great to know that if the worst happens (and that's pretty rare), it'll get sorted without a fuss.<sup>3</sup>

### Three-year warranty

All Volkswagen Crafter vans come with a three-year unlimited-mileage warranty, which protects your vehicle against the failure of most mechanical and electrical components due to manufacturing defects.

This 36 months consists of a two-year manufacturer's warranty with unlimited mileage plus a further one-year unlimited mileage Van Centre warranty.

All other Volkswagen Commercial Vehicles come with a three-year / 100,000 miles warranty. This consists of a two-year manufacturer's warranty with unlimited mileage plus a further one-year/100,000 miles (whichever is soonest) Van Centre warranty. Should the mileage exceed 100,000 within the first two years, the

manufacturer's two-year warranty will still be valid. If you want additional cover for subsequent years or higher mileage, you can buy it from an authorised Volkswagen Van Centre or Van Service Centre. However, you would have to buy this additional warranty before your van reaches 100,000 miles.

### Accessories warranty

At Volkswagen Commercial Vehicles, we take just as much pride in our accessories range as we do in our vehicles. They are developed and tested to ensure they're fit for purpose and meet the standards you would expect of a Volkswagen accessory. As a result, we're pleased to offer a two-year warranty on all our accessories.<sup>4</sup>

In addition, if you order your accessories at the same time as you order your new vehicle, we will increase this to a three-year warranty in line with your vehicle warranty.

# ...and two more ways you can drive one

## 1 Used vans that are Volkswagen assured

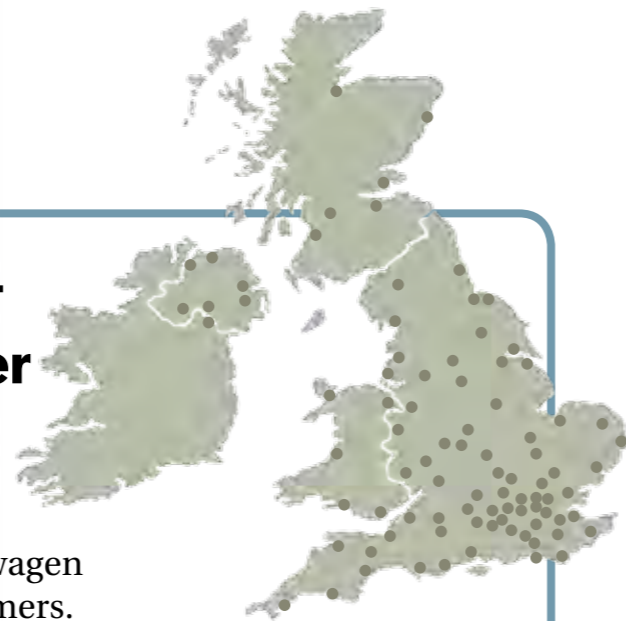
An increasing number of Volkswagen Van Centres are able to offer total peace of mind when you purchase a used van. You can rest easy, confident that every Volkswagen Assured Used Commercial Vehicle has been subjected to a comprehensive range of specialist checks to make them as safe a choice as a new Volkswagen van.

## 2 Volkswagen Van Rental

Many Volkswagen Van Centres offer a cost-effective van rental service. It comes with the assurance that every van is late model, low-mileage and presented in a high-quality condition that reflects your business operation. Long-term business rental is also available. For more information on Volkswagen Van Rental, call 0844 558 1588.

## Bringing it all together

The network of Van Centres is the backbone of everything Volkswagen does for its customers. All staff are specially trained, which means you can benefit from know-how built up over 60 years of experience. The network covers the whole country, and offers a wide range of products and services.



If you want advice or more information, call your nearest Van Centre on **0800 717131**

### The small print and the footnotes

- 1 Volkswagen Commercial Vehicle Finance is a trading name of Volkswagen Financial Services (UK) Limited. Subject to status. Finance available to over 18s only.
- 2 All mileages are approximate as the system uses kilometres as the distance measure. Please consult your authorised Volkswagen Van Centre or Van Service Centre for full details. Indemnities may be required.
- 3 Full details of Volkswagen warranties are available from your authorised Volkswagen Van Centre or Van Service Centre.
- 4 Unless otherwise stated. Some accessories come with a manufacturer warranty only.

Our quotations regarding product information, appearance, performance, dimension and weights in addition to illustrations and all information regarding fitting and technical data are based on characteristics of the UK market and correspond to knowledge available at the time of printing. We reserve the right to make changes to the product specification, design and colour without advance notification within the context of further development to our accessories. All pricing and product information is correct at the time of going to print.



**Up to 3 years' servicing on all new vans from £250\*.**

**One decision you won't need to think about.**

**Ask us for more details.**

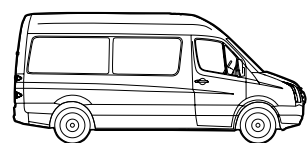
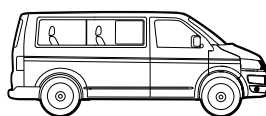
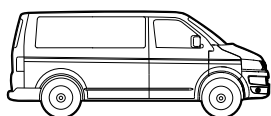
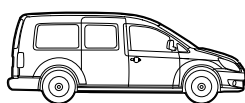
*LET'S GO TO WORK*



**Commercial Vehicles**



Sign up for all the latest news,  
offers and competitions at  
[www.volkswagen-vans.co.uk/vanmail](http://www.volkswagen-vans.co.uk/vanmail)



**Issue: March 2011**

Printed in UK 752234

This Vans price list supersedes all previous publications

[www.volkswagen-vans.co.uk](http://www.volkswagen-vans.co.uk)