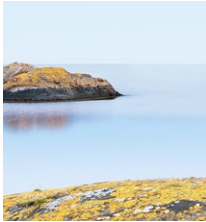




APRIL 2014  
[VOLVOCARS.CO.UK](http://VOLVOCARS.CO.UK)

VOLVO  
**S60**





**HELLO**  
PAGE 01



**YOUR NEW CAR**  
PAGE 04



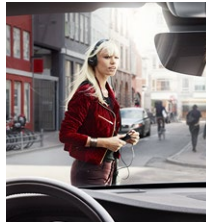
**INSIDE YOUR CAR**  
PAGE 08



**OUR DESIGN VISION**  
PAGE 10



**SENSUS**  
PAGE 12



**INTELLISAFE**  
PAGE 14



**DRIVE-E**  
PAGE 16



**R-DESIGN**  
PAGE 18



**EXPRESS YOURSELF**  
PAGE 22



**PERSONALISE YOUR INTERIOR**  
PAGE 24



**UPHOLSTERIES**  
PAGE 26



**ALUMINIUM WHEELS**  
PAGE 28



**ACCESSORIES**  
PAGE 30



**THE VOLVO EXPERIENCE**  
PAGE 34



**COLOURS**  
COVER



---

S60

---

HELLO

---

Read more at  
[volvocars.co.uk](http://volvocars.co.uk)

---

01

# WE'RE VOLVO. WE PUT PEOPLE FIRST.



---

*“What can we do to make  
this person’s life better, easier or  
more comfortable?”*

---

We're Swedish. Scandinavian designers always start with the person who's going to use an object and ask, "What can we do to make this person's life better, easier or more comfortable?" We've always used this philosophy when we design our cars. So, while other car manufacturers might start with technology and try to squeeze people in around it, we begin by designing our cars around you. We ask what you need, and then use our technical skills to make your life easier, better, safer and more beautiful. Form follows function, and when you design a car inside and out with people in mind, it looks naturally beautiful. We think that looking at and interacting with our cars should make you feel great, every day.

Designing cars around people has led to many innovations over our 86-year history. The three-point safety belt in your current car? That was our invention from 1959. And we hope that one day, every car will have a device to protect people on the outside of the car, like the Pedestrian Airbag we premiered in 2012. We've solved a few environmental issues, too – in 1976, we developed the Lambda Sond – a sensor that monitors exhaust gas, reducing emissions and boosting performance as well as economy. It's still part of every petrol-engined car in the world.

Innovation is at the core of Volvo. Perhaps it's because of where we come from.



In Sweden, great  
design is a way of life,  
not a luxury.



**For such a small country, we've produced more than our share of creative talent. That's because we know that to be truly creative, you've got to believe in yourself and do things the way you know they should be done, regardless of what others are doing.**

Take our seats. In the early 1960s, we consulted with a team of orthopaedic surgeons at Chalmers University of Technology in Gothenburg. They wondered why a group of car designers wanted to see them. Nobody had thought to ask an orthopaedic surgeon's advice when designing a car seat before. But the ergonomic seat designs we developed as a result have made our cars world-famous for their outstanding long-distance comfort.

Like all Scandinavian craftsmen, we use only the best materials for the job, like the ultra-strong boron steel in our safety cages. We use natural, authentic materials inside our cars – not because they're fashionable this season, but because they make you feel good when you touch them and they're better for your health.

Creating a beautiful experience for you is natural for us. Because in Sweden, great design is a way of life, not a luxury.



S60

YOUR NEW CAR

Read more at  
[volvocars.co.uk](http://volvocars.co.uk)

04

# OUR NEW VOLVO S60. FOR PEOPLE WHO LIKE TO TAKE THE LONG WAY HOME.

---

*"We've boosted the car's handling, design and controls with a comprehensive series of updates that'll have you searching for any excuse to get behind the wheel."*

---

"If you're the kind of driver who chooses the back roads when you drive home from work, just to get a smile on your face at the end of the day, then you're the person we had in mind when we were designing the new S60." That's how Stefan Sällqvist, our Product Manager who worked on the set-up of the car, describes the S60 – and we couldn't put it any better.

For 2013 we've boosted the car's handling, design and controls with a


comprehensive series of updates that'll have you searching for any excuse to get behind the wheel. And even when you're not driving, the S60 will still bring a smile to your face with its looks – our designers have emphasized its road-hugging stance and made its face a little tougher and more self-confident, while still retaining the clean, contemporary Scandinavian design that made the S60 such a success right from its launch.





When you accelerate out of  
a corner...  
It's like it can read your mind.





It's all about how you drive – with the Four-C chassis, you get to choose between three different modes. Comfort and Sport are self-explanatory; Advanced really optimises your car's grip. And you can change between modes at any time at the push of a button.

READ MORE AT [VOLVOCARS.CO.UK](http://VOLVOCARS.CO.UK)

**We've focused on the new S60's natural driving dynamics so that its actions immediately correspond to your desires.**

When you accelerate out of a tight corner, for example, your S60 will follow the path you choose with almost telepathic accuracy. Drivers will love Corner Traction

Control, a torque vectoring system that helps you avoid understeer by applying just the right amount of power and brake force to the inner and the outer wheels as you accelerate out of a corner. You'll find this particularly handy if you're merging into fast moving traffic from a side road.

What's more, a good chassis is the foundation behind any great

handling car, and S60 owners can choose from three individual chassis types: Dynamic, Four-C and our R-Design Sport Chassis. We've spent thousands of hours perfecting and tuning them. We think you'll be thrilled by the result: a responsive, in-command driving experience, whichever option you choose.



S60

INSIDE YOUR CAR

Read more at  
[volvocars.co.uk](http://volvocars.co.uk)

08



If you enjoy driving, order our new optional gearshift paddles. They offer faster gear changes and by allowing you to keep your hands on the steering wheel, they also ensure you're always 100 per cent in control of your car. In addition to its dynamic handling, the S60 also has the comfort you expect from a luxury car. "We're famous for our seats," says the S60's Product Manager, Stefan Sällqvist, "they're something we never compromise on. We're proud of our new Sport seat. It looks fantastic and hugs you and supports you from your thighs to your shoulders. True to Volvo's renowned ergonomic design, you'll be able to drive for hours sitting in them without getting tired."



OUR NEW SPORT SEATS  
ARE JUST AS GRIPPING  
AS THE HANDLING.







S60

OUR DESIGN VISION

Read more at  
[volvocars.co.uk](http://volvocars.co.uk)

11

# Form follows function: Yes, it looks as good as it performs.

**You know when you're driving on a highway, you look in your rear view mirror and see a really striking car's "face" approaching you? That's our new S60.**

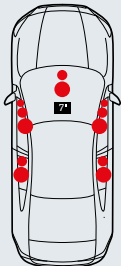
"We've increased the S60's road presence with more focused and determined-looking headlamps," explains our senior exterior designer Peter Reuterberg. "We were thinking of a wolf's eyes when we designed the car's 'face'. The S60 has a confident, focused expression, like a powerful animal that is so aware of its capabilities that it can stare you down without the need to bare its teeth."

"We've emphasised the S60's horizontal lines at the front, with a wider grille,

horizontal chrome bars and daylight running lights that are positioned low to the ground to give the car a striking, road-hugging presence," adds our exterior design manager Steve Potter. "And true to our Scandinavian origins, we've worked on every last detail to reduce the exterior's 'visual noise'. We've masked anything that might detract from the S60's elegant, clean surfaces, even moving the washer nozzles out of sight under the bonnet. We've also painted the radar cover a glossy black so it practically disappears. There's no chrome frame around the grille, which adds to the car's sportiness and modernity. And we've given it a bigger Iron Mark – Volvo's iconic badge – which again enhances the car's self-confident look. It's proud to be a Volvo."

You can order your new S60 with beautifully crafted integrated tailpipes. They remain perfectly in place, even though the pipe system expands by 25mm as the engine reaches its operating temperature. This is true Scandinavian precision engineering.

TO SEE MORE OF THE S60'S COOL DESIGN FEATURES, GO TO  
**[VOLVOCARS.CO.UK](http://VOLVOCARS.CO.UK)**



#### FULL SONIC IMMERSION

At Volvo, we believe you should enjoy the very best audio experience. That's why we've designed our state-of-the-art Sensus Connect with Premium Sound by Harman Kardon®. Using 12 high-fidelity loudspeakers the amplifier is equipped with Dirac Live®, the next generation sound enhancement software. With an incredibly realistic stage sound as well as enhanced bass performance, this sound system provides an unparalleled aural experience for every passenger and connects easily with external media players.

READ MORE AT [VOLVOCARS.CO.UK](http://VOLVOCARS.CO.UK)

Our beautifully designed, high-res colour display allows you to choose between three driving modes for your Adaptive Digital Display and centre screen – Elegance, Eco and Performance.



S60

SENSUS

Read more at  
volvocars.co.uk

13

# Volvo Sensus. You're in control, naturally.



Since you'll spend most of your time in the driver's seat of your Volvo, we've designed a gorgeous space around you. All of your controls are as easy to use and intuitive as possible. We call this approach to connecting you and your car with the world around you – Sensus.

Our beautiful Adaptive Digital Display is the latest expression of this philosophy. Not only does it give you all the information you need without overwhelming you with data, it also gives you three background modes to choose from – Elegance, Eco, and Performance. Best of all, the display modes sync with the 7-inch centre screen in your dashboard. As you adjust your display theme, the colour scheme of your centre screen changes with it.

And there's more: with our Sensus Connect solutions, you can convert the 7-inch screen in your dashboard into an internet-connected infotainment hub, giving you access to TuneIn internet radio with 100,000 stations worldwide as well as a range of useful and fun web-apps. Add Sensus Navigation, and you get instant access to worldwide maps. As part of our MapCare program, free map updates are included to guarantee you the latest available and up to date navigation experience. And with 3D-navigation finding your destination will be easier than ever. The Sensus experience is at its best when you bundle Sensus Connect and Sensus Navigation with Volvo On Call.

Volvo On Call gives you 3G-connection with excellent reception by making use of your car's integrated rooftop antenna, which means you can create a Wi-Fi hotspot for all of your internet-connected devices. Volvo On Call also includes our innovative smartphone app that you can use to remotely control your car. Whether you're still inside your home on a

cold morning, or at an airport on the other side of the planet, the Volvo On Call app will soon become your daily connection with your car: you'll use it to send an address to your navigation system, check your car's fuel level and location and much more.

But we wouldn't be true to our Swedish design values if we only created beautiful displays, screens and apps. True to our passion for sculpting physical objects, we've put the same amount of care into your Volvo's physical controls, such as our iconic floating centre stack with the



trademark 'manikin' climate control buttons. And after dark, our eye-catching illuminated gearshifter for automatic gearboxes adds a touch of atmosphere to your night drives.



S60

INTELLISAFE

Read more at  
[volvocars.co.uk](http://volvocars.co.uk)

14

# OH YES. DID WE MENTION SAFETY?

---

*“Cars are driven by people,” they said, “so the guiding principle behind everything we make at Volvo is – and must remain – safety.”*

---

In 1927 our founders, Assar Gabrielsson and Gustaf Larson, decided to make really strong cars that could cope with our rough country roads. But strength alone wasn't enough. They also had a vision: “Cars are driven by people,” they said, “so the guiding principle behind everything we make at Volvo is – and must remain – safety.” Now our goal is that, by 2020, nobody shall be seriously injured or killed in a new Volvo. We think our founders would have approved.

In order to help us achieve this goal, and in keeping with our philosophy of making your life easier, your S60 has a whole suite of intuitive safety technologies inside it. They're there to support your daily driving, protecting you in the event

of an accident and often preventing collisions in the first place. We call this IntelliSafe.

We know S60 owners love driving, but in a world of busier and busier roads, you are constantly exposed to other people's mistakes. You've always expected Volvos to be safe in the event of a crash, but IntelliSafe goes beyond that. It's our complete approach to safety and includes some really smart technologies such as City Safety and Collision Warning with Full Auto Brake, Pedestrian Detection and Cyclist Detection.

Our Lane Keeping Aid is also there to help you stay in your lane by applying steering torque when the car gets close to a lane marking and is potentially about to leave it.

It's good to know that your S60 doesn't just protect you – it actively supports you, too. With Active High Beam, for example, your headlights stay on full beam all the time. When another car comes towards you (or when you approach a car from behind), the system prevents dazzling the other driver by shading out exactly as much of your beam as necessary.

Our Electronic Stability Control (ESC) is another IntelliSafe technology. If there's a risk of your S60 losing stability, ESC applies just the right amount of brake force to one or more wheels and reduces engine power as needed to prevent any skidding. You'll probably never notice a thing. But that's OK, we're just doing our job.





In town, City Safety is designed to prevent you from colliding with the car in front if it stops suddenly. This advanced IntelliSafe system works at speeds of up to 31 mph and senses if you're about to collide with another car, then, if necessary, applies the brakes.



We've further improved our Blind Spot Information System (BLIS). It now uses radar technology to alert you to vehicles closing up in your blind spot. There's also Cross Traffic Alert, which watches out for vehicles you can't see when you're reversing out of tight parking spaces.



Because we care about other road users just as much as you, Pedestrian Detection with Full Auto Brake watches out for people walking into your path and applies the brakes if you're unable to react in time.



S60

DRIVE-E

Read more at  
[volvocars.co.uk](http://volvocars.co.uk)

16

**Drive-E is at the heart of every Volvo we make. It's our all-encompassing approach to sustainable driving, our innovative thinking behind a whole range of technologies that will give you more efficiency – and lower running costs – without compromising on a pleasurable drive.**

The latest expression of our Drive-E philosophy is our range of all-new low-consumption, low-emission Drive-E powertrains. Built to provide efficient power, they consist of all-new lightweight, low-friction engines and all-new gearboxes. For the S60, the choice ranges from the 2.0-litre turbodiesel D4 with CO<sub>2</sub> emissions of just 99g/km\* to the T6 306 HP petrol option. These compact engines are perfectly matched with an all-new, innovative automatic eight-speed gearbox. Together, engine and gearbox form a drivetrain which delivers a great driving experience and even better efficiency than before. And if you'd like to boost your efficiency even further, our intelligent ECO+ function can help to reduce fuel consumption.

As part of our Drive-E philosophy, we also employ Start/Stop technology and energy recovery systems. Drive-E also means recyclability and more sustainable manufacturing – for example, all of the electricity for our factory in Sweden comes from clean, hydro-electric power. All this makes Drive-E a central part of everything we do.

\*Fuel consumption and CO<sub>2</sub> emissions figures apply to manual cars and limited selection of wheels and tyres.

DRIVE-E



WE THINK SUSTAINABLE  
DRIVING IS EXCITING.  
SO WILL YOU.





S60

R-DESIGN

Read more at  
[volvocars.co.uk](http://volvocars.co.uk)

18

For an exterior with a more individual, sporty look, R-Design offers gorgeously sculpted alloy wheels and unique door mirror covers with Silk Metal finish. At the back, a motorsport-style diffuser enhances your car's dynamic presence, while the R-Design chrome dual exhaust pipes add the perfect finishing touch to your S60's exterior.



# Are you looking at me? Good.

Would you like to enhance the dynamic personality of your S60 even further? Well then, R-Design is for you, with a range of features to give your Volvo a sporty, unique profile.

But R-Design is so much more than a cosmetic exercise – as with the all the best Scandinavian design, form follows function. So, for example, R-Design sport chassis has been lowered and stiffened for even better cornering – meaning you'll enjoy the thrill of driving your S60 even more.





---

S60

---

R-DESIGN

---

Read more at  
[volvocars.co.uk](http://volvocars.co.uk)

---

20

The R-Design story continues in the interior, starting with supportive sport seats in Nubuck textile and leather. Also included is an exclusive R-Design steering wheel, as well as sport pedals. An illuminated soft-touch gear shifter for automatic gearboxes, our unique blue digital instrument cluster and personalised interior LED lighting all add to the R-Design experience.





# WHICH S60 ARE YOU?

Congratulations, you've chosen a Volvo S60. When you've picked your preferred engine all you need to do is select the trim level that's right for you. Whether you'd like all the trimmings or a sporty look both inside and out, we have the right one for you.





**S60**

EXPRESS YOURSELF

Read more at  
[volvocars.co.uk](http://volvocars.co.uk)

23

## BUSINESS EDITION

The Business Edition comes with all the features you would expect from Volvo. Beyond the innovative City Safety technology, LED day running lights, 16" alloy wheels, ESC (Electronic Stability Control) system and rear park assist, the Business Edition offers electronic climate control, cruise control, a DAB (Digital Audio Broadcasting) Radio and Sensus Navigation with 7" colour display screen and Bluetooth®.

## SE

The SE offers a range of innovative features including an automatic rain sensor, autofolding power door mirrors with ground lights and an integrated grocery bag holder. The interior benefits from Textile/T-Tec upholstery and aluminium trim whilst the exterior provides 17" alloy wheels and chrome window surrounds.

## SE LUX

Our most luxurious variant is the SE Lux. Above and beyond SE specification, the SE Lux has leather-faced upholstery, an active TFT crystal driver's information display, power adjustable driver's seat with memory function, and active bending xenon headlights with headlight cleaning system.

## R-DESIGN

18" Ixion alloy wheels together with the R-Design chassis enhance the handling of this model. Visual presence is complemented with silver matt door mirrors, unique rear exhaust pipes, together with front sports seats with side support, R-Design upholstery, aluminium interior trim and an R-Design leather steering wheel. A DAB (Digital Audio Broadcasting) Radio and Bluetooth® also come as standard.

## R-DESIGN LUX

The R-Design Lux is the ultimate variant and includes active bending xenon headlights with headlight cleaning system, autofolding power door mirrors with ground lights, rain sensor and rear park assist. The added features on the inside include a grocery bag holder, power adjustable driver's seat with memory for seat and exterior mirrors, auto-dimming rear view mirror and high performance audio sound system with Bluetooth®.

## NAV

All Volvo S60 Nav models include Sensus Connect\* with High Performance sound with voice activated control, a 7" colour display screen, DVD player, internet and music browsing and a Sensus Navigation system. As well as full European mapping, lifetime map updates are included.

\* A separate mobile data plan is required to enable online connectivity.



S60

PERSONALISE  
YOUR INTERIOR

Read more at  
[volvocars.co.uk](http://volvocars.co.uk)

24

Your S60 is your  
home away from home.  
Give it your signature.



**Choose an S60 and you'll enjoy an elegantly designed cabin as standard, with a superior finish in evidence everywhere you look – from the silk metal finish on our air vents to the fine cloth surfaces on the door pillars.**

Our Comfort seats can be ordered in Mellbystrand textile, Tylösand T-Tec/textile or leather, while our new R-Design Sports seats in leather give you legendary Volvo comfort while also keeping you firmly in place in those fast corners. And for added control, our optional

gearshift paddles allow you to change gears with the flick of a finger, so you never have to take your hands off the steering wheel while driving. It's a great feature for added control. You can go one better by choosing our heated steering wheel, which lets you gently warm your hands on cold winter mornings. And with our heated windscreen, you'll never have to stand outside scraping ice off the glass in the freezing cold. Once you're in the driver's seat, you'll appreciate the brand new easy-to-read Analogue Instrument Cluster or, if you prefer, our new Adaptive Digital Display.



FIND OUT MORE AT [VOLVOCARS.CO.UK](http://VOLVOCARS.CO.UK)



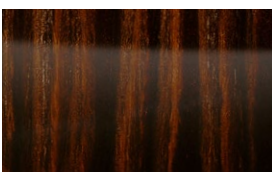
**Textile 3001**  
Off-Black interior with Quartz headlining



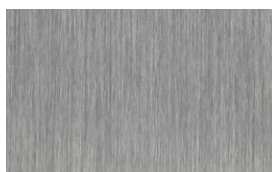
**Textile/T-Tec 3601**  
Off-Black interior with Quartz headlining



**Leather-faced 3701**  
Off-Black interior with Quartz headlining



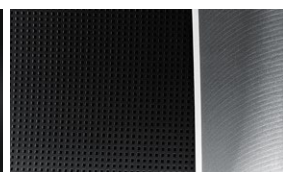
Urbane Wood



Shimmer Graphite aluminium



Piano Black Wood



R-Design aluminium



S60

UPHOLSTERIES

Read more at  
[volvocars.co.uk](http://volvocars.co.uk)

27



**Leather-faced 370P**

Off-Black interior with Soft Beige  
seats and headlining



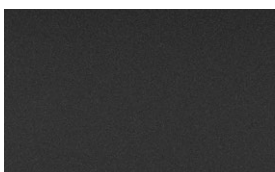
**R-Design Nubuck textile/  
perforated leather, 3R60**

Off-Black interior with  
Charcoal headlining



**R-Design Leather/  
perforated leather, 3T60**

Off-Black interior with  
Charcoal headlining



Charcoal

A SELECTION OF OUR INTERIORS

SEE OUR COMPLETE INTERIOR RANGE AT  
[VOLVOCARS.CO.UK/BUILDYOUROWN](http://VOLVOCARS.CO.UK/BUILDYOUROWN)



Titania, 8x18", Diamond Cut/Glossy Black



S60

ALUMINIUM WHEELS

Read more at  
[volvocars.co.uk](http://volvocars.co.uk)

29



Artio, 8x19"  
Diamond Cut/Matte Tech Black



Inscription Bor, 8x19"  
Diamond Cut/Iron Stone Matte



Ixon II, 8x19"  
Diamond Cut/Matte Black



Freja, 8x18"  
Diamond Cut/Matte Dark Grey



Freja, 8x18"  
Diamond Cut/Light Grey



Ixon, 8x18"  
Diamond Cut/Dark Grey



Modin, 8x18"  
Diamond Cut/Glossy Black



Modin, 8x18"  
Diamond Cut/Matte Iron Stone



Modin, 8x18"  
Diamond Cut/Matte Terra Bronze



Sleipner, 8x18"  
Black Chrome



Sadia, 8x17"  
Silver



Pandora, 7x17"  
Silver



Rex, 7x17"  
Silver



Hera, 7x16"  
Silver



S60

ACCESSORIES

Read more at  
[volvocars.co.uk](http://volvocars.co.uk)

30

# MATCH YOUR S60 TO YOUR LIFE.

The most pleasurable part of buying a new Volvo is putting your personal stamp on it. You can do that by choosing accessories that reflect your own taste and that cater to your particular lifestyle.

**Exterior styling accessories.** This car is equipped with front skidplate, side scuff plates and rear skidplate with dual integrated tailpipes, available in Matte Silver, Iron Stone or Terra Bronze finish. The Modin alloy wheels, 8x18", are available in Diamond Cut/Glossy Black, Diamond Cut/Matte Iron Stone or Diamond Cut/Matte Terra Bronze.

FIND MORE ACCESSORIES AT  
**[VOLVOCARS.CO.UK/ACCESSORIES](http://VOLVOCARS.CO.UK/ACCESSORIES)**











S60

ACCESSORIES

Read more at  
[volvocars.co.uk](http://volvocars.co.uk)

33

**Park Assist Camera, front blind view.**

There is nothing more challenging than trying to negotiate tight exits and junctions, which often have restricted visibility. We aim to make that easier for you with our Park Assist Camera, front blind view, which allows you to "see around corners" with a 180° field of vision to the left and right in front of you.

**Convertible child seat (9–25 kg).** This advanced, flexible rearward-facing child seat is suitable for children aged 9 months to six years. It's fitted using the car's safety belt and is easily adjusted to help optimise comfort and safety.

**Tempa Spare Wheel Storage.** An integrated solution to store the Tempa spare wheel under the floor in the luggage compartment. It allows the Tempa spare wheel to be concealed, making it easier to load the luggage compartment, while retaining easy access to the spare wheel.

**Rear Seat Entertainment multimedia system with two 8-inch touch screens and two players.** Rear seat passengers will enjoy their journey as never before with our new generation entertainment system, with LCD touch-screens served by dedicated DVD players. Inputs for USB sticks, SD cards and mp3-players as well as AUX inputs ensure you can connect any other external source. Wireless headphones and one remote control are included, too.

**Towbar-mounted bicycle holder for 1-2 bikes.** Our compact new bicycle holder is very easy to use, holds two bicycles and can be mounted on your car's towbar in two easy steps. And when the holder is not being used, it's easy to store in your car or at home.



VOLVO CAR LIFESTYLE COLLECTION

SEE MORE LIFESTYLE ACCESSORIES AT [VOLVOCARS.CO.UK/COLLECTION](http://VOLVOCARS.CO.UK/COLLECTION)





---

S60

---

Read more at  
[volvocars.co.uk](http://volvocars.co.uk)

---

35



THE MOST CAREFREE  
WAY TO OWN A CAR.  
EVER.





S60

THE VOLVO  
EXPERIENCE

Read more at  
[volvocars.co.uk](http://volvocars.co.uk)

We love it when you're happy. When things are easier than you expect, or go faster and become better. Because when you buy a Volvo, you buy the easiest way to own a car. Financing, insurance, servicing, changing tyres – those aspects of having a car that you might not find very interesting are exactly the ones we love to make easier and better for you. That's why your Volvo dealer will always offer you a whole range of simplifying services and offers all designed around you, giving you the most carefree ownership experience possible.

And that's not all. We've also brought our Designed Around You philosophy to the way we service and repair your car. With every service we provide you Volvo Service Promise. Six commitments to you guaranteeing an unbeatable combination of quality, reassurance and expertise.

#### **BUYING & OWNING**

- Warranties
- Financing
- Leasing
- Insurance Plan
- Service Plan

#### **VOLVO SERVICE PROMISE**

- Volvo Service Promise
- Software updates
- Personal Service Contact
- Rental cars
- Tyre services

#### **IF SOMETHING HAPPENS**

- Volvo Assistance
- Repairs
- Volvo Glass Services
- Car Climate Services
- Volvo Accident Assistance

#### **MY VOLVO**

My Volvo is a personalised website designed to make everything about your car ownership as convenient and rewarding as possible. It gives you:

- A clear overview of your car ownership
- Personalised offers
- Relevant news and updates
- Direct access to your Volvo dealer
- Online service booking
- Useful information about driving and caring for your car
- Interesting articles and videos from the world of Volvo

#### **CONNECTED SERVICE BOOKING**

Forget about your car service. Your Volvo remembers it for you.

No other car makes it so simple for you. With Connected Service Booking, which is available with Sensus Connect, your Volvo reminds you when it needs servicing. When the time comes to drive to your workshop, your Volvo will even guide you there using sat nav – you don't have to do anything. And since your Volvo tells us what it needs, we can make sure that it gets exactly the right maintenance when it gets there. Of course, you can also manage your bookings yourself, if you prefer. You can either do this when you're in the car or online using your My Volvo – your personalised website designed to make everything about your car ownership as convenient and rewarding as possible.

FIND OUT MORE AT **[VOLVOCARS.CO.UK](http://VOLVOCARS.CO.UK)**



**614** Ice White  
(Also available for R-Design)



**707** Inscription Crystal White Pearl  
(Sparkling metallic, shifts from white to shimmering warm yellow-white effect depending on light and viewing angle)  
(Also available for R-Design)



**713** Power Blue metallic  
(Also available for R-Design)



**619** Rebel Blue  
(Only available for R-Design)



**487** Inscription Ember Black metallic  
(Sparkling metallic, shifts from black to brown effect depending on light and viewing angle)



**452** Black Sapphire metallic  
(Also available for R-Design)



**702** Flamenco Red metallic



**612** Passion Red  
(Also available for R-Design)

**N.B** Some information may have been updated since this brochure was printed. Some of the equipment described or shown may now be available only at extra cost. Before ordering, please ask your Volvo dealer for the latest information. The manufacturer reserves the right to make changes at any time, without notice to prices, colour, materials, specifications and models.





S60

COLOURS

Read more at  
[volvocars.co.uk](http://volvocars.co.uk)



**711** Bright Silver metallic



**477** Inscription Electric Silver metallic  
(Sparkling metallic, shifts from silver to blue effect  
depending on light and viewing angle)  
(Also available for R-Design)



**498** Caspian Blue metallic



**019** Black Stone



**492** Savile Grey metallic  
(Also available for R-Design)



**484** Seashell metallic

FIND OUT MORE AT [VOLVOCARS.CO.UK](http://VOLVOCARS.CO.UK)

**Please note:** It's not possible to reproduce exact original shades in printed matter or on screen. Please ask your dealer to show you samples.

**Official fuel consumption for the Volvo S60 range in MPG (l/100km):**

Urban 29.4 (9.6) – 65.7 (4.3), Extra Urban 50.4 (5.6) – 78.5 (3.6),  
Combined 41.5 (6.8) – 74.3 (3.8). CO<sub>2</sub> Emissions 159 – 99g/km.

MPG figures are obtained from laboratory testing intended for  
comparisons between vehicles and may not reflect real driving results.



**V O L V O**