

SIMPLY CLEVER

ŠKODA



The ŠKODA Roomster



Effective: November 2012

Welcome to the Roomster

Ground breaking practicality and comfort form the basis of this forward-thinking MPV which really did break the mould. Why not take a minute to understand exactly how the Roomster can fit into your life?

Space. The Roomster's boot can hold 480 litres with the rear seats up. That's an impressive amount of space for a small MPV, but not as impressive as the 1,810 litres of space you get when you remove the 'Varioflex' seats altogether. And with other intelligent storage solutions such as the double glovebox and the 1.5 litre bottle holder, in Roomster, all the space is maximised.

Varioflex seating. Offering over 20 different seat configurations, the 'Varioflex' system ensures you can arrange the 'Living Room' to suit your needs. Taking the kids on a day trip? Leave the seats in. Only got two kids? Take the centre seat out. Need to take the rubbish to the dump? Take all the seats out so you can do it in one go. Going cycling? Take one seat out to make some room... we could go on and on!

Modular Design: The Driving Room. The design of the Roomster provides two distinct areas; the 'Driving Room' and the 'Living Room'. Each area has been designed to make sure you are comfortable and enjoy the ride. Unlike other MPVs, the position of the seats and the steering wheel has been designed to make you feel like you are driving a conventional hatchback, so you won't have to compromise on your driving fun!

Modular Design: The Living Room. The 'Living Room' offers its passengers a large, comfortable, airy, light and flexible space. The rear seats are slightly higher than the front and together with the deeper rear windows offer a great view. And of course, there's also the huge flexibility given by the 'Varioflex' seating.

ŠKODA Assistance. Every ŠKODA is covered by ŠKODA Roadside Assistance. So if you break down, even if you're on holiday or on business in Europe, you can use the freephone number to call someone to come and help you. Best of all it's completely free for 3 years.

Roomster Scout. Fancy something a little different? The Scout offers the Roomster in a more rugged, adventurous skin. With Scout floor mats, Scout upholstery and Scout body mouldings, all the practicality of the Roomster has been packaged into a more robust, stylised look. And with great specification, the Scout gives both comfort and style to go with its practicality.

SE Plus. We are delighted to announce a new trim level for the Roomster range. The special edition Roomster SE Plus offers you the most popular options built into the standard specification of the car, at a fantastic price.

To ensure you get great value for money, we have packaged together our new Kristal upholstery with roof rails, climate control, a Multi-function steering wheel and a multi device interface to connect your MP3 player!

These additional features offer value in excess of £1,000 over the standard Roomster SE, but you will pay much less!

More details about the Roomster SE Plus can be found on page 9.



So you've read a little about some of the Roomster's features, but what else do you need to know about the Roomster?

The Roomster has been refreshed, giving the car a more dynamic appearance. The main changes are at the front. A redesigned, wider front grille and newly designed headlights optically widen the Roomster, strengthening the horizontal lines and increasing its road presence. The sculpted bonnet and wraparound windscreen with black A pillars and 'floating' roof remain, making for a car that retains an air of style, elegance and contemporary design.

The modern exterior is matched by the updated interior. Newly designed stereos, steering wheels and upholsteries improve the feeling of style and quality of Roomster - soft touch surfaces and ergonomically laid out controls make the car a joy to drive. With outstanding boot space, headroom and legroom, not to mention lots of room for luggage, driver and passengers can travel in comfort.

The biggest change for Roomster was under the bonnet. Cleaner and more efficient petrol and diesel engines offer the driver a suitable engine for every situation. TSI petrol engines offer a great blend of power and torque combined with low CO₂ and improved fuel economy, whilst the range of 'Common Rail' diesel engines emit just 124g/km of CO₂, helping to reduce the impact on the environment.

The new Roomster GreenLine II is fitted with technological advancements such as a Stop/start system, gear change recommendation, and energy recovery, improving economy and lowering CO₂ emissions even further. These advancements mean the Roomster GreenLine II emits just 109 g/km CO₂, with a combined fuel economy of 67.3 mpg making it the most economical Roomster ever!

So now the introduction to the refreshed Roomster is over, why not take a look at the Roomster in a little more detail?



The ŠKODA Roomster S

	CO ₂ (g/km)	VED Band**	Insurance Group (50)	Recommended Basic	VAT	RRP	Recommended OTR*	Business user information	
								BiK 2012/13	P11D Value
1.2 12V 69PS 5spd	143	F	5E	£9,295.83	£1,859.17	£11,155.00	£11,855.00	19%	£11,665.00
1.2 TSI 86PS 5spd	134	E	9E	£9,845.83	£1,969.17	£11,815.00	£12,500.00	17%	£12,325.00
1.2 TSI 105PS 7spd DSG	134	E	12E	£11,133.33	£2,226.67	£13,360.00	£14,045.00	17%	£13,870.00

Standard Equipment

15" 'Satellite' steel wheel covers (195/55 R15 85H)	Central door locking	Exterior temperature gauge	Interior rear view mirror with dimming facility	Rear wiper with intermittent control
12V socket in boot	Curtain airbags	Folding grab handles in the roof frame	ISOFIX for child seats in rear	Roof aerial with second antenna in windscreen for FM2 signal.
2 DIN radio 'Swing' with single CD player (can play MP3 recordings)	Delayed interior lighting	Halogen headlights	Load securing loops in luggage space	Ticket holder
3 point seat belts in the rear	Driver and passenger front and side airbags	Headlight range adjustment	Manually adjustable door mirrors	Tinted glass
3.5mm aux. socket (for MP3 players)	Driver and passenger seat belt warning light	Heated rear glass	Middle console with 12V outlet, cup holder and storage box	Tyre repair kit (no spare wheel) †
4 speakers	Driver and passenger vanity mirror	Height adjustable driver seat	Parcel shelf (dual position)	Varioflex seating
ABS (Anti-Lock Braking System)	Driver door mirror (aspherical) providing an increased field of view	Height adjustable front head restraints	Pollen filter	Windscreen wiper with intermittent control (4 speed)
Black door mirrors and door handles	Electric front windows	Height and reach adjustable 4-spoke steering wheel	Power steering	
Body coloured bumpers	ESC Inc. ABS, ASR, EDL, HBA (1.2 TSI DSG only)	Hill Hold Control (1.2 TSI DSG only)	Rear fog light	
Category 2 electronic immobiliser			Rear headrests (x2)	

For offers visit www.skoda.co.uk/offers

† Temporary spare wheel or temporary 'Space saver' spare wheel can be ordered as an option. If added the tyre repair kit will be removed. For further details please check page 12.



Band	CO ₂ (g/km)	First 12 Months ¹	Standard VED ²	OTR (Recommended On The Road) * Recommended 'On the Road' prices include delivery, 12 months Road Fund Licence, DVLA First registration Fee (at £55), and apply to the United Kingdom only.	VED (Vehicle Excise Duty) ** All vehicles will be subject to Vehicle Excise Duty based on the fuel type of the vehicle and its carbon dioxide (CO ₂) emissions level, measured in grams per kilometre (g/km). Due to changes in vehicle emissions data, CO ₂ figures may differ on these vehicles if taken from current ŠKODA UK stock. The VED bands are shown in the table opposite.	¹ First year vehicle licence rates for petrol and diesel cars purchased on or after 1st April 2012. First year rate or 'showroom tax' applies to new car purchases only.	Company car tax is based on your cars carbon dioxide emissions. The higher the car's emissions, the higher its tax liability. When a company car is made available for private use a 'Benefit in Kind' value is calculated for tax purposes.	P11D (Expenses and Benefits) The P11D value is calculated by taking the On The Road (OTR) price for the vehicle, less the Road Fund Licence (RFL) and First Registration Fee (FRF).
A	Up to 100	£0	£0					
B	101 - 110	£0	£20					
C	111 - 120	£0	£30					
D	121 - 130	£0	£100					
E	131 - 140	£120	£120					
F	141 - 150	£135	£135					
G	151 - 165	£170	£170					
H	166 - 175	£275	£195					
I	176 - 185	£325	£215					
J	186 - 200	£460	£250					
K	201 - 225	£600	£270					
L	226 - 255	£815	£460					
M	Over 255	£1,030	£475					

Please confirm figures with your ŠKODA retailer. Edition: UK 1st April 2012. VAT is calculated at 20%. For fuel consumption data, please refer to page 16.

To help you work out your tax liability please refer to page 22.

BIK (Benefit in Kind)
The BiK percentage value is based on the CO₂ emissions of the vehicle for the current tax year 2012/2013.

ŠKODA GreenLine II Technology

A combination of innovative technology and practical design features ensure that the Roomster GreenLine II is highly efficient and environmentally friendly. Below is an explanation of the technology present in the Roomster GreenLine II and how it works to keep fuel costs down and environmental impact low.



1.2 TDI CR 75PS DPF. The economical three cylinder 1.2 TDI diesel engine in the GreenLine II produces just 109 g/km CO₂ which means the first 12 months road tax is totally free!

The Roomster GreenLine II has a combined fuel economy of 67.3 mpg, making the Roomster GreenLine II the most frugal Roomster ever made!

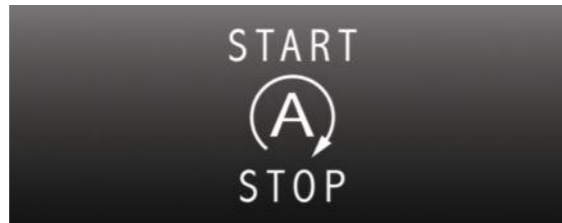


Energy Recovery. Energy recovery is the process of converting kinetic energy (energy created through movement) back into usable electricity, which is either stored in the battery, or immediately used again by electrical components on the vehicle.

Depending on driving style, electrical energy is supplied to the vehicle by the alternator or directly by the battery. The principle of energy recovery is to reduce the load on the engine and therefore contribute to lower emissions and reduced fuel consumption.



Low rolling resistance tyres. The Roomster GreenLine II has 15" Antares alloys (6)x15" 185/60 R15 84H) these lighter alloy wheels with low rolling resistance tyres have a higher prescribed air pressure to reduce friction.



Stop/start System. This innovative system turns off the engine when it is not needed, for example when the driver is stopped at traffic lights or in heavy traffic.

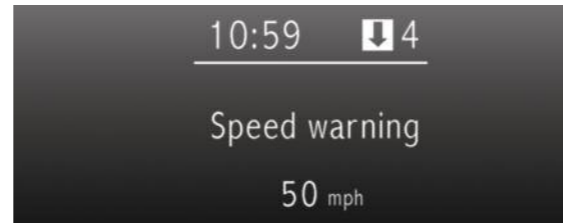
When a normal car is stationary, the engine will idle, which in turn consumes fuel and generates emissions. The Stop/start system cleverly cuts out this unnecessary work by stopping the engine automatically when the car is stationary, in neutral and the clutch pedal is released.

The Stop/start system does not inhibit a quick getaway either. As soon as the driver presses the clutch to put the vehicle in gear, the engine immediately starts up so acceleration is as instant as if the car had been idling.



Aerodynamics. One of the simplest ways to improve fuel efficiency and reduce emissions, is to create a more aero-dynamic vehicle.

To keep the weight and drag of the GreenLine II models down to a minimum and thus ensure the model is as efficient as possible, there is a reduced list of options available. However, the comfort and safety of all occupants has not been compromised and so important features like airbags and air conditioning have been retained.



Gear recommendations. The recommended gear feature on the trip computer or Maxi-dot display shows the driver whether the gear they are in is appropriate or whether they need to change up or down.

The aim is to help the driver achieve optimum engine speed and reduce fuel consumption.

The ŠKODA Roomster GreenLine II

	CO ₂ (g/km)	VED Band**	Insurance Group (50)	Recommended Basic	VAT	RRP	Recommended OTR*	Business user information	
								BiK 2012/13	P11D Value
1.2 TDI CR 75PS DPF 5spd	109	B	9E	£13,025.00	£2,605.00	£15,630.00	£16,195.00	15%	£16,140.00

Standard Equipment

15" 'Antares' alloys (6) x 15" 185/60 R15 84H)
12V socket in boot
3.5mm aux socket (for MP3 players etc)
4 spoke steering wheel (plastic)
8 speakers
Black protective side mouldings
Body coloured bumpers
Body coloured door mirrors and handles
Category 1 alarm with tilt sensor
Chrome surround on radiator grille

Cruise control
Curtain airbags
Delayed interior lighting
Driver and passenger front and side airbags
Driver and passenger seat-belt warning light
Driver door mirror (aspherical) providing an increased field of view
Energy recovery
Electrically adjustable and heated door mirrors
ESC with TPM & HHC

Floor mats
Front electric windows
Front fog lights
Gear change recommendation
Glovebox cover (Illuminated)
Halogen projector lights with DE module
Headlight range adjustment
Height adjustable driver and passenger seat
ISOFIX for child seats in rear
Load securing loops in luggage space
Manually controlled air conditioning

Plastic gearknob and handbrake lever
Radio Swing with single CD (can play MP3 recordings)
Rear disc brakes
Remote central locking
Stop/start
Trip computer with gear change recommendation
Tyre repair kit
Varioflex seating
Windscreen wiper with intermittent control (4 speeds)

For offers visit www.skoda.co.uk/offers

Band	CO ₂ (g/km)	First 12 Months ¹	Standard VED ²
A	Up to 100	£0	£0
B	101 - 110	£0	£20
C	111 - 120	£0	£30
D	121 - 130	£0	£100
E	131 - 140	£120	£120
F	141 - 150	£135	£135
G	151 - 165	£170	£170
H	166 - 175	£275	£195
I	176 - 185	£325	£215
J	186 - 200	£460	£250
K	201 - 225	£600	£270
L	226 - 255	£815	£460
M	Over 255	£1,030	£475

OTR (Recommended On The Road)

* Recommended 'On the Road' prices include delivery, 12 months Road Fund Licence, DVLA First registration Fee (at £55), and apply to the United Kingdom only.

VED (Vehicle Excise Duty)

** All vehicles will be subject to Vehicle Excise Duty based on the fuel type of the vehicle and its carbon dioxide (CO₂) emissions level, measured in grams per kilometre (g/km). Due to changes in vehicle emissions data, CO₂ figures may differ on these vehicles if taken from current ŠKODA UK stock. The VED bands are shown in the table opposite.

¹ First year vehicle licence rates for petrol and diesel cars purchased on or after 1st April 2012. First year rate or 'showroom tax' applies to new car purchases only.

² Rate reverts to the Government's applicable Standard VED rate in subsequent years.

Please confirm figures with your ŠKODA retailer. Edition: UK 1st April 2012. VAT is calculated at 20%. For fuel consumption data, please refer to page 16.

Company car tax is based on your car's carbon dioxide emissions. The higher the car's emissions, the higher its tax liability. When a company car is made available for private use a 'Benefit in Kind' value is calculated for tax purposes.

To help you work out your tax liability please refer to page 22.

P11D (Expenses and Benefits)

The P11D value is calculated by taking the On The Road (OTR) price for the vehicle, less the Road Fund Licence (RFL) and First Registration Fee (FRF).

BiK (Benefit in Kind)
The BiK percentage value is based on the CO₂ emissions of the vehicle for the current tax year 2012/2013.

The ŠKODA Roomster SE

	CO ₂ (g/km)	VED Band**	Insurance Group (50)	Recommended Basic	VAT	RRP	Recommended OTR*	Business user information	
								BiK 2012/13	P11D Value
1.2 12V 69PS 5spd	143	F	tbc	£10,520.83	£2,104.17	£12,625.00	£13,325.00	19%	£13,135.00
1.2 TSI 86PS 5spd	134	E	9E	£11,000.00	£2,200.00	£13,200.00	£13,885.00	17%	£13,710.00
1.2 TSI 105PS 5spd	134	E	12E	£11,554.17	£2,310.83	£13,865.00	£14,550.00	17%	£14,375.00
1.2 TSI 105PS 7spd DSG	134	E	12E	£12,287.50	£2,457.50	£14,745.00	£15,430.00	17%	£15,255.00
1.6 TDI CR 90PS 5spd DPF	124	D	11E	£12,175.00	£2,435.00	£14,610.00	£15,175.00	18%	£15,120.00
1.6 TDI CR 105PS 5spd DPF	124	D	13E	£12,362.50	£2,472.50	£14,835.00	£15,400.00	18%	£15,345.00

Standard Equipment (over S)

15" 'Avior' alloys (195/55 R15 85H) incl. anti-theft locking wheel bolts	Halogen projector lights with DE module
Acoustic rear parking sensors	Height adjustable passenger seat
Additional 4 speakers	Illuminated glovebox with covers
Black protective side mouldings	Manual air conditioning
Body coloured door mirrors and handles	Metallic paint
Category 1 electronic alarm and immobiliser with backup horn and towing protection	Middle rear seat with armrest and cupholders (when folded)
Chrome surround on radiator grille	Panoramic sunroof
Electric rear windows	Remote central locking
Electrically adjustable and heated door mirrors	Storage tray under passenger seat
Floor mats (x4)	Storage tray in boot
Glovebox cover	Sunset glass (from the B-pillar back)
	Trip computer

For offers visit www.skoda.co.uk/offers



The ŠKODA Roomster SE Plus

	CO ₂ (g/km)	VED Band**	Insurance Group (50)	Recommended Basic	VAT	RRP	Recommended OTR*	Business user information	
								BiK 2012/13	P11D Value
1.2 12V 69PS 5spd	143	F	6E	£10,891.67	£2,178.33	£13,070.00	£13,770.00	19%	£13,580.00
1.2 TSI 86PS 5spd	134	E	9E	£11,441.67	£2,288.33	£13,730.00	£14,415.00	17%	£14,240.00
1.2 TSI 105PS 5spd	134	E	12E	£11,995.83	£2,399.17	£14,395.00	£15,080.00	17%	£14,905.00
1.2 TSI 105PS 7spd DSG	134	E	12E	£12,729.17	£2,545.83	£15,275.00	£15,960.00	17%	£15,785.00
1.6 TDI CR 90PS 5spd DPF	124	D	11E	£12,616.67	£2,523.33	£15,140.00	£15,705.00	18%	£15,650.00
1.6 TDI CR 105PS 5spd DPF	124	D	14E	£12,804.17	£2,560.83	£15,365.00	£15,930.00	18%	£15,875.00

Standard Equipment (over SE)

15" 'Antares' alloys (195/55 R15 85H)
Black roof rails
4 spoke multi function steering wheel for radio
Climate control air conditioning
Kristal upholstery
Luggage net under parcel shelf
MDI (Multi Device Interface) and cable for connecting MP3 players

For offers visit www.skoda.co.uk/offers



Band	CO ₂ (g/km)	First 12 Months ¹ VED ²	Standard VED ²
A	Up to 100	£0	£0
B	101 - 110	£0	£20
C	111 - 120	£0	£30
D	121 - 130	£0	£100
E	131 - 140	£120	£120
F	141 - 150	£135	£135
G	151 - 165	£170	£170
H	166 - 175	£275	£195
I	176 - 185	£325	£215
J	186 - 200	£460	£250
K	201 - 225	£600	£270
L	226 - 255	£815	£460
M	Over 255	£1,030	£475

OTR (Recommended On The Road)

* Recommended 'On the Road' prices include delivery, 12 months Road Fund Licence, DVLA First registration Fee (at £55), and apply to the United Kingdom only.

VED (Vehicle Excise Duty)

** All vehicles will be subject to Vehicle Excise Duty based on the fuel type of the vehicle and its carbon dioxide (CO₂) emissions level, measured in grams per kilometre (g/km). Due to changes in vehicle emissions data, CO₂ figures may differ on these vehicles if taken from current ŠKODA UK stock. The VED bands are shown in the table opposite.

¹ First year vehicle licence rates for petrol and diesel cars purchased on or after 1st April 2012. First year rate or 'showroom tax' applies to new car purchases only.

² Rate reverts to the Government's applicable Standard VED rate in subsequent years.

Please confirm figures with your ŠKODA retailer. Edition: UK 1st April 2012. VAT is calculated at 20%. For fuel consumption data, please refer to page 16.

Company car tax is based on your cars carbon dioxide emissions. The higher the car's emissions, the higher its tax liability. When a company car is made available for private use a 'Benefit in Kind' value is calculated for tax purposes.

To help you work out your tax liability please refer to page 22.

P11D (Expenses and Benefits)

The P11D value is calculated by taking the On The Road (OTR) price for the vehicle, less the Road Fund Licence (RFL) and First Registration Fee (FRF).

BIK (Benefit in Kind)
The BIK percentage value is based on the CO₂ emissions of the vehicle for the current tax year 2012/2013.

The ŠKODA Roomster Scout

	CO ₂ (g/km)	VED Band**	Insurance Group (50)	Recommended Basic	VAT	RRP	Recommended OTR*	Business user information BiK 2012/13	P11D Value
1.2 TSI 86PS 5spd	134	E	9E	£11,550.00	£2,310.00	£13,860.00	£14,545.00	17%	£14,370.00
1.2 TSI 105PS 5spd	134	E	12E	£12,104.17	£2,420.83	£14,525.00	£15,210.00	17%	£15,035.00
1.2 TSI 105PS 7spd DSG	134	E	12E	£12,837.50	£2,567.50	£15,405.00	£16,090.00	17%	£15,915.00
1.6 TDI CR 90PS 5spd DPF	124	D	11E	£12,725.00	£2,545.00	£15,270.00	£15,835.00	18%	£15,780.00
1.6 TDI CR 105PS 5spd DPF	124	D	13E	£12,912.50	£2,582.50	£15,495.00	£16,060.00	18%	£16,005.00

Standard Equipment (over S)

16" 'Scout' alloys incl. (205/45 R16 87W) incl. anti-theft locking wheel bolts
 3 spoke leather steering wheel, leather gearknob, handbrake & gaiter
 Additional 4 speakers
 Black roof rails
 Body coloured door mirrors and handles
 Category 1 electronic alarm and immobiliser with backup horn and towing protection
 Chrome surround on radiator grille
 Electrically adjustable and heated door mirrors
 ESC Inc. ABS, ASR, EDL, HBA

Front fog lights
 Halogen projector lights with DE module
 Height adjustable passenger seat
 Illuminated glovebox with covers
 Manual air conditioning
 Middle rear seat with armrest and cupholders (when folded)
 Rear disc brakes
 Remote central locking
 'Scout' textile floor mats
 'Scout' styled body mouldings
 'Scout' upholstery
 Storage tray under passenger seat
 Stainless steel pedal set

Storage tray in boot
 Sunset glass (from the B-pillar back)
 Tyre Pressure Monitor (TPM)
 Trip computer



For offers visit www.skoda.co.uk/offers

Band	CO ₂ (g/km)	First 12 Months	Standard VED ²
A	Up to 100	£0	£0
B	101 - 110	£0	£20
C	111 - 120	£0	£30
D	121 - 130	£0	£100
E	131 - 140	£120	£120
F	141 - 150	£135	£135
G	151 - 165	£170	£170
H	166 - 175	£275	£195
I	176 - 185	£325	£215
J	186 - 200	£460	£250
K	201 - 225	£600	£270
L	226 - 255	£815	£460
M	Over 255	£1,030	£475

OTR (Recommended On The Road)
 * Recommended 'On the Road' prices include delivery, 12 months Road Fund Licence, DVLA First registration Fee (at £55), and apply to the United Kingdom only.

VED (Vehicle Excise Duty)
 ** All vehicles will be subject to Vehicle Excise Duty based on the fuel type of the vehicle and its carbon dioxide (CO₂) emissions level, measured in grams per kilometre (g/km). Due to changes in vehicle emissions data, CO₂ figures may differ on these vehicles if taken from current ŠKODA UK stock. The VED bands are shown in the table opposite.

¹ First year vehicle licence rates for petrol and diesel cars purchased on or after 1st April 2012. First year rate or 'showroom tax' applies to new car purchases only.
² Rate reverts to the Government's applicable Standard VED rate in subsequent years.

Please confirm figures with your ŠKODA retailer. Edition: UK 1st April 2012. VAT is calculated at 20%. For fuel consumption data, please refer to page 16.

Company car tax is based on your cars carbon dioxide emissions. The higher the car's emissions, the higher its tax liability. When a company car is made available for private use a 'Benefit in Kind' value is calculated for tax purposes.

To help you work out your tax liability please refer to page 22.

P11D (Expenses and Benefits)
 The P11D value is calculated by taking the On The Road (OTR) price for the vehicle, less the Road Fund Licence (RFL) and First Registration Fee (FRF).

BiK (Benefit in Kind)
 The BiK percentage value is based on the CO₂ emissions of the vehicle for the current tax year 2012/2013.

ŠKODA Roomster 'Varioflex' seating

The Roomster has been designed with both the driver and passengers in mind. The interior is split between the 'Driving Room' and the 'Living Room'. The 'Living Room' is characterised by the revolutionary 'Varioflex' seating system.



The 'Varioflex' seating provides a flexible and functional array of seat positions. The outer seats are able to slide backwards and forwards and recline, whilst the middle seat folds down to create an additional armrest and convenient table and drinks holders (table and drinks holders standard on SE, SE Plus and Scout).

The 'Varioflex' seating has over 20 different seat combinations. All seats can individually be folded down, lifted up and secured behind the front seats or removed completely. The centre seat can be removed and the two outer seats pushed inwards to create a more spacious two seat 'Living Room'.

All 3 seats can be removed quickly and easily to create an enormous flat loadspace with a volume of 1,810 litres*

* 1,810 litres represents a space large enough to hold a small flock of sheep, goats or one concrete block from the Hoover dam! (Source - AQA)



Factory Fitted Optional Equipment

Option	S		GreenLine II		SE		SE Plus		Scout	
	Basic	RRP	Basic	RRP	Basic	RRP	Basic	RRP	Basic	RRP
Bicycle holder in luggage compartment	£150.00	£180	-	-	£150.00	£180	£150.00	£180	£150.00	£180
Lower glovebox cover	£41.67	£50	std	std	std	std	std	std	std	std
Storage tray under passenger seat	-	-	-	-	std	std	std	std	std	std
Temporary spare steel wheel / *Space saver* steel wheel *	£58.33	£70	-	-	£58.33	£70	£58.33	£70	£58.33	£70
Textile floor mats	£41.67	£50	std	std	std	std	std	std	std	std
Third rear headrest	£54.17	£65	£54.17	£65	£54.17	£65	£54.17	£65	£54.17	£65

Exterior										
16" 'Atria' alloys (6.5)x16" 205/45 R16 83W)	-	-	-	-	£183.33	£220	£183.33	£220	-	-
17" 'Scout' alloys (7)x17" 205/40 R17 84W)	-	-	-	-	-	-	-	-	£279.17	£335
Black roof rails	£191.67	£230	£191.67	£230	£191.67	£230	std	std	std	std
Black roof	-	-	-	-	£312.50	£375.00	£312.50	£375.00	-	-
Metallic / Pearl effect paint	£412.50	£495	£412.50	£495	std	std	std	std	£412.50	£495
Panoramic sunroof	£495.83	£595	-	-	std	std	std	std	£495.83	£595
Silver roof rails	£308.33	£370	£308.33	£370	£308.33	£370	£120.83	£145	£120.83	£145
Sunset glass (from B-pillar back)	£191.67	£230	£191.67	£230	std	std	std	std	std	std

Steering wheels & Bluetooth®										
3 spoke leather steering wheel with small leather package ††	-	-	£216.67	£260	£216.67	£260	-	-	-	-
3 spoke MFSW for radio and small leather pack ††	-	-	£250.00	£300	£250.00	£300	-	-	-	-
3 spoke MFSW for radio and telephone with small leather pack*††	-	-	£266.67	£320	£266.67	£320	£266.67	£320	£129.17	£155
4 spoke leather steering wheel and small leather pack ††	£150.00	£180	-	-	-	-	-	-	-	-
Telephone preparation GSM II with Bluetooth® and Maxi Dot †††	-	-	£283.33	£340	£283.33	£340	£283.33	£340	£283.33	£340

Safety & Security										
Alarm with interior monitoring, back up horn and towing protection	£241.67	£290	std	std	std	std	std	std	std	std
Cornering front fog lights	-	-	-	-	£204.17	£245	£204.17	£245	-	-
Curve projector headlights incl. cornering front fog lights	-	-	£404.17	£485	£404.17	£485	£404.17	£485	-	-
ESC incl. ABS,MSR,ASR,EDL and HBA	£308.33	£370	-	-	£308.33	£370	£308.33	£370	std	std
ESC Plus (ESC+TPM+HHC)	-	-	std	std	£404.17	£485	£404.17	£485	£112.50	£135
Front fog lights	£141.67	£170	std	std	£141.67	£170	£141.67	£170	std	std
Remote central locking	£150.00	£180	std	std	std	std	std	std	std	std
Switch-off function for passenger airbag	£66.67	£80	£66.67	£80	£66.67	£80	£66.67	£80	£66.67	£80
Tyre pressure monitor	-	-	-	-	£83.33	£100	£83.33	£100	std	std

Note: MFSW - Multi Function Steering Wheel

- Unavailable on this trim

std Standard equipment on this trim

* Dependant on trim and optional wheel fitted. Please consult your Retailer for details.

** Factory fit tow bar will only support lights required for towing (ie brake, hazard and indicator). Caravan customers who need twin electrics (also known as split charging) should order the Retailer fit accessories Tow Bar and electrics.

◇ For terms and conditions please see page 23

◆ Requires Bluetooth®

†† Small leather package (steering wheel and hand brake in leather, gearknob and gaiter in leatherette)

††† Must be ordered in conjunction with a three or four spoke leather steering wheel or MFSW

Factory Fitted Optional Equipment (continued)

Option	S		GreenLine II		SE		SE Plus		Scout	
	Basic	RRP	Basic	RRP	Basic	RRP	Basic	RRP	Basic	RRP
Comfort & Convenience										
Acoustic rear parking sensors	-	-	-	-	std	std	std	std	£237.50	£285
'Amundsen' satellite navigation (Inc. Western European maps)	-	-	£445.83	£535	£445.83	£535	£445.83	£535	£445.83	£535
Climate control air conditioning	-	-	-	-	£233.33	£280	std	std	£233.33	£280
Cruise control	£150.00	£180	std	std	£150.00	£180	£150.00	£180	£150.00	£180
Daytime running LED lights	-	-	-	-	-	-	-	-	£83.33	£100
Electric rear windows	-	-	£133.33	£160	std	std	std	std	£133.33	£160
Front armrest	-	-	-	-	£79.17	£95	£79.17	£95	£79.17	£95
Heated front seats	£141.67	£170	£141.67	£170	£141.67	£170	£141.67	£170	£141.67	£170
Manual air conditioning	£466.67	£560	std	std	std	std	-	-	std	std
Maxi-dot	-	-	£133.33	£160	£133.33	£160	£133.33	£160	£133.33	£160
MDI (Multi Device Interface)	-	-	£145.83	£175	£145.83	£175	std	std	£145.83	£175
Partial leather upholstery (cloth, leather and artificial leather) †††	-	-	-	-	£508.33	£610	-	-	£508.33	£610

Towing										
Tow bar, removable and lockable**	£266.67	£320	-	-	£266.67	£320	£266.67	£320	£266.67	£320
Tow bar preparation**	£95.83	£115	-	-	£95.83	£115	£95.83	£115	£95.83	£115

Extended warranty										
4 years / 80,000 miles ◇	£133.33	£160	£133.33	£160	£133.33	£160	£133.33	£160	£133.33	£160
5 years / 100,000 miles ◇	£245.83	£295	£245.83	£295	£245.83	£295	£245.83	£295	£245.83	£295



Black roof available on SE and SE Plus models (selected colours only see page 14 for details)



Cruise control



MDI (Mobile Device Interface)

The ŠKODA Roomster colours

Black roof available*



1. Candy White



2. Corrida Red



3. Black Magic pearl effect



4. Brilliant Silver metallic



5. Shark Blue metallic



6. Cappuccino metallic



7. Storm Blue metallic



8. Rosso Brunello metallic



9. Miami Blue metallic



10. Regency Green metallic



11. Muscovado metallic

Standard roof only



12. Pacific Blue



13. Steel Grey metallic



14. Petrol Blue metallic

	1	2	3	4	5	6	7	8
	Candy White	Corrida Red	Black Magic pearl effect	Brilliant Silver metallic	Shark Blue metallic	Cappuccino metallic	Storm Blue metallic	Rosso Brunello metallic
Roomster	•	•	•	•	•	•	•	•
Roomster Scout	•	•	•	•	•	•	•	•

	9	10	11	12	13	14
	Miami Blue metallic	Regency Green metallic	Muscovado metallic	Pacific Blue	Steel Grey metallic	Petrol Blue metallic
Roomster	•	•	•	•	•	•
Roomster Scout	•	•	•	•	•	•

* Black roof available on SE and SE Plus models

Because of errors which may occur in the print, the colours illustrated here may differ from the actual finishes themselves. Your ŠKODA retailer will be pleased to advise you.

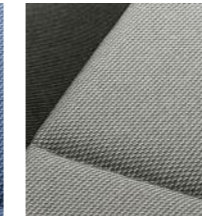
The ŠKODA Roomster trims & wheels

S

Standard



Stone Blue & Onyx dash or Stone Blue & Silver dash



Stone Grey & Onyx dash or Stone Grey & Silver dash



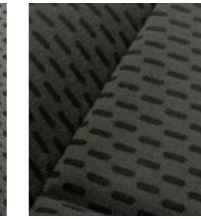
15" "Satellite" Steel wheel covers

SE

Standard



Domino Grey & Onyx dash or Domino Grey & Silver dash



Domino Black & Onyx dash or Domino Black & Silver dash



15" "Avior" alloys



16" "Atria" alloys



Partial Leather upholstery & Onyx dash or Partial Leather upholstery & Silver dash

SE Plus

Standard



Kristal upholstery & Onyx dash



15" "Antares" alloys



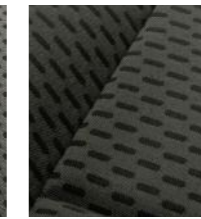
16" Atria alloys

GreenLine II

Standard



Domino Grey & Onyx dash or Domino Grey & Silver dash



Domino Black & Onyx dash or Domino Black & Silver dash



15" "Antares" alloys

Scout

Standard



'Scout' Onyx cloth & Onyx or Silver dash



16" "Scout" alloys



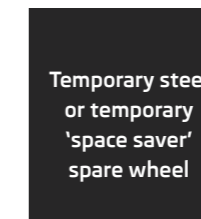
17" "Scout" alloys



Partial leather upholstery with Onyx dash or Silver dash

Available on all models (except GreenLine II)

Option



See page 12 for details

Please note all interiors come with black carpets and floor mats

Pictures are for illustrative purposes only.

Please visit your local retailer for further information.

The ŠKODA Roomster Engine Specifications

Petrol Engines	1.2 12V 69PS	1.2 TSI 86PS	1.2 TSI 105PS	1.2 TSI 105PS DSG
Trim level	S / SE / SE Plus	S / SE / SE Plus / Scout	SE / SE Plus / Scout	S / SE / SE Plus / Scout
Type	3-cylinder in-line engine	4-cylinder in-line engine	4-cylinder in-line engine	4-cylinder in-line engine
Valves per cylinder	4	2	2	2
Fuel injection type	Multipoint Fuel Injection	Electronically Controlled Direct Injection	Electronically Controlled Direct Injection	Electronically Controlled Direct Injection
Cubic capacity cc	1,198	1,197	1,197	1,197
Bore x stroke mm	76.5 x 86.9	71.0 x 75.6	71.0 x 75.6	71.0 x 75.6
Air pollution regulation	EU 5	EU 5	EU 5	EU 5
Compression ratio	10.5:1	10.0:1	10.0:1	10.0:1
Performance				
Max speed mph (km/h)	99 (159)□	107 (172)□	114 (184)□	114 (184)□
Acceleration 0-62mph	15.9	12.6	10.9	11.0
Max. performance (PS/rpm)	69 / 5,400	86 / 4,800	105 / 5,000	105 / 5,000
Max. torque (Nm/rpm)	112 / 3,000	160 / 1,500 - 3,500	175 / 1,500 - 4,100	175 / 1,500 - 4,100
Fuel consumption mpg (l/100km)				
Urban*	34.5 (8.2)	39.8 (7.1)	39.8 (7.1)	39.2 (7.2)
Extra Urban*	56.5 (5.0)	57.7 (4.9)	57.7 (4.9)	58.9 (4.8)
Combined*	45.6 (6.2)	49.6 (5.7)	49.6 (5.7)	49.6 (5.7)
CO ₂ emissions g/km*	143	134	134	134

□ Where law permits.

Power transmission

Clutch Hydraulically-activated single-plate dry clutch with diaphragm spring, asbestos-free coating.

Manual transmission Five-speed manual transmission, fully synchronised with direct gearshift.

Automatic transmission- 7 speed DSG Two coaxial dry multiple disc clutch, electro - hydraulically operated.

Chassis

Front axle/rear axle McPherson suspension with lower triangular links and torsion stabiliser, compound link crank-axle.

Suspension Telescopic shock absorbers with coil springs, in the rear outside the springs.

Braking system Hydraulic dual-diagonal circuit braking system vacuum assisted.

Front brakes Disc brakes with inner cooling, with single/piston floating caliper.

Rear brakes Drum brakes with two self-adjusting brake shoes, or disc brakes (depending on engine type).

Handbrake Mechanical handbrake operating on rear wheels.

Steering Direct rack and pinion steering with electrohydraulic power steering.

Turning circle (m) 10.5

Diesel Engines	1.2 TDI CR 75PS DPF	1.6 TDI CR 90PS DPF	1.6 TDI CR 105PS DPF
Trim level	GreenLine II	SE / SE Plus / Scout	SE / SE Plus / Scout
Type	3-cylinder in-line engine	4-cylinder in-line engine	4-cylinder in-line engine
Valves per cylinder	4	4	4
Fuel injection type	Electronically Controlled Direct Injection	Electronically Controlled Direct Injection	Electronically Controlled Direct Injection
Cubic capacity cc	1,199	1,598	1,598
Bore x stroke mm	79.5 x 80.5	79.5 x 80.5	79.5 x 80.5
Air pollution regulation	EU 5	EU 5	EU 5
Compression ratio	16.5:1	16.5:1	16.5:1
Performance			
Max speed mph (km/h)	103 (165)□	106 (171)□	112 (181)□
Acceleration 0-62mph	15.4	13.3	11.5
Max. performance (PS/rpm)	75 / 4,200	90 / 4,200	105 / 4,400
Max. torque (Nm/rpm)	180 / 2,000	230 / 1,500-2,500	250 / 1,500-2,500
Fuel consumption mpg (l/100km)			
Urban*	56.5 (5.0)	49.6 (5.7)	49.6 (5.7)
Extra Urban*	76.4 (3.7)	68.9 (4.1)	68.9 (4.1)
Combined*	67.3 (4.2)	60.1 (4.7)	60.1 (4.7)
CO ₂ emissions g/km*	109	124	124

□ Where law permits.

Tank

Fuel tank content (litres) 55

Fuel Lead-free petrol with RON 95 or Lead-free petrol with RON 91[†].

Fuel Diesel

Body type Five-door, two compartments, five seater.

Drag co-efficient

standard 0.33

Greenline II 0.31

Official fuel consumption for the Roomster range in mpg (litres/100km):

urban 34.5 (8.2) - 56.5 (5.0);
extra urban 56.5 (5.0) - 76.4 (3.7);
combined 45.6 (6.2) - 67.3 (4.2).

CO₂ Range 143 - 109 g/km

[†]Using low-octane fuel may affect engine performance.

We measure the maximum power output figures of our engines in PS or Pferdestärke (horse strength in German), which is the metric equivalent of bhp. To convert from metric to imperial horsepower, divide the PS figure by 1.0139.

* Official fuel consumption according to EU Directive 99/94.

The consumption calculation according to 1999/100/EC is based on the actual unladen weight of the vehicle. Additional specifications can lead to a higher weight class and hence to consumption figures of this higher weight class. The driving style, road and traffic conditions, environmental influences and vehicle condition can in practice lead to consumption figures which may differ from those calculated in this standard.

Measurements and Weights

The ŠKODA Roomster

Interior dimensions (mm)

Legroom - front max./min. 1,063/843
 Legroom - rear max./min. 945/700

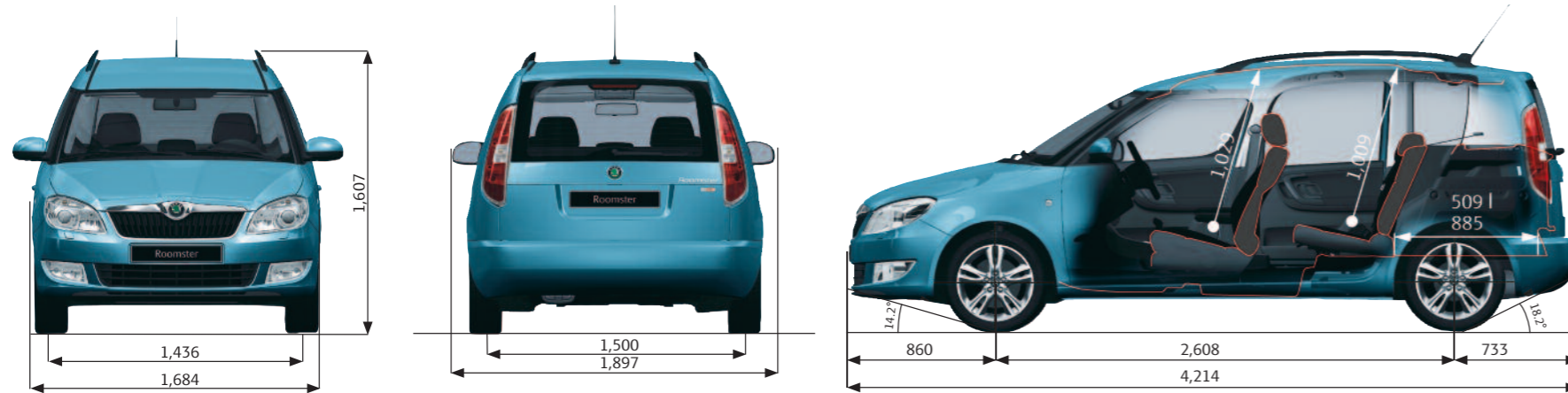
Luggage storage space (litres)

with rear seats up 450
 with rear seats backrests down 1,555
 with rear seats removed 1,780
 With rear seats up (no spare wheel) 480

With rear seats backrest down (no spare wheel) 1,585
 with rear seats removed (no spare wheel) 1,810

Ground clearance (mm)

Standard 140
 GreenLine II 140



Petrol	1.2 12V 69PS	1.2 TSI 86PS	1.2 TSI 105PS	1.2 TSI 105PS DSG
Weight				
Kerb weight* kg	1,125	1,146	1,162	1,196
Total weight kg	1,655	1,676	1,692	1,726
Payload** kg	530	530	530	530
Max roof load kg	75	75	75	75
Towing unbraked max kg	450	450	450	450
Towing braked max kg	700	900	1,100	1,100
Nose weight max kg	50	50	50	50

Diesel	1.2 TDI CR 75PS DPF	1.6TDI CR 90PS	1.6TDI CR 105PS
Weight			
Kerb weight* kg	1,239	1,247	1,247
Total weight kg	1,769	1,777	1,777
Payload** kg	530	530	530
Max roof load kg	75	75	75
Towing unbraked max kg	450	450	450
Towing braked max kg	1,200	1,200	1,200
Nose weight max kg	50	50	50

* Kerb Weight is the mass of the vehicle with body work in running order. ** Payload includes Driver at 75kg & Equipment.

All measurements and weights are correct at time of going to print but may be subject to change and may vary according to passengers and load in vehicle.

A practical MPV for families with a versatile interior space to suit every need





ŠKODA Customer Promise
Where actions speak louder than words



Care and consideration for you and your car

- We will...**
- > Work competently and in your best interests
 - > Treat you as a valued individual and respect and care for your property



A flexible and convenient service

- We will...**
- > Provide flexibility and choice of dates and times for booking and collection
 - > Ensure our price will be all-inclusive for the work we agree to undertake
 - > Endeavour to diagnose a vehicle defect within 24 hours of the vehicle being presented to us
 - > Offer free collection and delivery within a 10 mile radius (up to 20 minutes drive time) for pre-bookings
 - > Provide a courtesy car or arrange onward mobility if your vehicle is to be kept overnight



Expertise and attention to detail

- We will...**
- > Complete the work as agreed with you
 - > Always gain your authority if any additional work is required
 - > Keep you informed of progress and advise you when your car is ready
 - > Complete a complimentary visual health check if your vehicle is left with us and include a professional recommendation of:
 - Any components that require replacing immediately
 - The point at which any part of your car should be re-checked in the near future
 - > Check for any warrantable product enhancements recommended by ŠKODA and perform these free of charge
 - > Always use genuine ŠKODA parts and accessories
 - > Wash your car following a Service



A clear explanation of our work

- We will...**
- > Ensure our invoice matches the booking price
 - > Provide a full explanation of work completed and any additional charges made
 - > Communicate clearly in an open and honest way avoiding jargon
 - > Review the vehicle condition report and explain all work completed
 - > Where possible, perform a workaround of the vehicle with you
 - > Value your feedback and will encourage you to complete our Your Opinion Counts survey so you can tell us what you liked and how we can improve further

Technical glossary

ABS: the anti-lock braking system prevents the wheels from locking during heavy or emergency braking, enabling the vehicle to remain steerable. When braking, wheel speed sensors measure the road wheel speed and should one or more wheels start to lock the system reduces brake pressure to that wheel.

The ABS system includes:-

- EBC**: Electronic brake control. The engine brake torque control regulates the power supply by intervening with the engine management system.

CAN Bus: the CAN Bus is an electronic data bus which links the various different electronic control systems in the car. It ensures ideal co-ordination between systems and reduces the amount of wiring needed in the car.

Fuel cut-out: should one or more of the airbags inflate after an accident, this system automatically cuts out the fuel supply, thus preventing subsequent leakage of the diesel or petrol.

Trip Computer: the trip computer not only features an impressive range of data displays, operating it is simplicity itself. A multifunction touch key enables you to call up all relevant data on the easy-to-read display. Features include external temperature, time, current fuel consumption, average fuel consumption, miles driven and average speed.

DPF: diesel particulate filter is part of the exhaust system responsible for cleaning the engine exhaust gases before they enter the atmosphere. The DPF catches soot particles emitted in the exhaust gas and it works in conjunction with the catalytic converter, which reduces the amount of harmful gases entering the atmosphere. The DPF must periodically be emptied of the soot particles, a process known as regeneration. This involves elevated exhaust system temperatures. A driving style is required during regeneration, where a constant vehicle speed above 37 mph must be maintained. This does not always suit customers who make frequent short journeys or experience stop/start driving or drive within inner-city or urban areas.

CR: the completely new range of diesel engines are built on a system of Common-Rail fuel injection. The diesel engines have a high-pressure common rail direct injection fuel system and four-valve technology. As a result, the new engines are much quieter, more refined in their operation and consume less fuel, compared to the Pump Duse engines and significantly reduce emissions.

ESC: electronic stability control is designed to stabilise the dynamic handling response of the vehicle by counteracting any tendency towards oversteer or understeer. The ESC constantly compares the actual movement of the vehicle with predetermined values and according to the situation ESC reacts by braking each wheel individually (according to direction of slip) and automatically adjusting the engine’s output.

Elements of ESC system:-

- ASR**: anti-slip regulation traction control ensures the Roomster’s stability when pulling away or accelerating. If the engine power or torque being transmitted to the drive wheels is too great, for example on a slippery road surface, engine torque is automatically reduced until optimum road holding returns, thus preventing wheelspin. A light indicates whether the ASR system is on. It can be manually switched off.

- EDL**: the electronic differential lock continually compares the rpm of the drive wheels, and if it identifies a difference between them which could lead to an individual wheel spinning, for example if the two wheels are on different types of surface or accelerating on wet leaves, the system brakes the wheel affected until uniform rpm of all drive wheels is restored.

- HBA**: Hydraulic brake assistant increases the optimal build-up of brake power. It ensures complete use of the brake system potential, thus shortening the braking distance.

- HHC**: Hill hold control allows for a safe hill start by holding the brake for a small amount of time, reducing the risk of unintentional reversing or roll back.

- TPM**: Draws the driver’s attention to any pressure loss in any of the tyres. Early warning can prevent damage from occurring as a result of an under inflated tyre or a defect that radically changes the cars behaviour and driveability.

Customer services

Talk to us on 08457 745 745

No matter what the query, our dedicated call centre is always ready to listen. No matter how big or small the request, speak to one of our customer care advisors to see if they can help. The call centre is open from 8.30am-5.30pm. If you’re calling out of hours, then a message can be left and you’ll be contacted back.

Peace of mind with a ŠKODA warranty

In the first two years of owning your car, you’ll get the peace of mind of a two year unlimited mileage warranty. In addition, you’ll also get a further warranty on new vehicles supplied through the appointed dealer network until the vehicle has completed 60,000 miles or the end of the third year, whichever is sooner.

Your Roomster also benefits from a 3 year paint warranty and 12 year body protection warranty.

A network that’s here to help

With 17 years in the top 10 of JD Power’s customer satisfaction survey, our network of approximately 125 retailers knows how to treat a customer. You can be sure that as a ŠKODA customer, your retailer will look after you from the moment you walk through the door, throughout the life of your ŠKODA. Your new Roomster will be serviced and maintained to the highest standards by specially trained ŠKODA technicians. And when you need a spare part you’ll be happy to know that most are held in stock, or can be ordered within 24 hours. So if top class customer satisfaction is what you’re after, the ŠKODA network will be there for you.

Motability

People in receipt of the Higher Mobility Component of the Disability Living Allowance receive special help from ŠKODA. Preferential prices on low cost Contract Hire are available through your local approved Motability retailer. For full details, contact your retailer.

If your ŠKODA’s in trouble, rely on ŠKODA Assistance

Completely free of charge, every new ŠKODA is covered by ŠKODA Assistance, provided by the RAC through a dedicated team. This cover lasts for 3 years, with no mileage limit. So if you ever break down, you can use the freephone number to call out someone who really knows about ŠKODA cars to help. This service is even available in Europe, so you don't need additional breakdown cover when you're driving on the continent.

Financing your ŠKODA

We all know that times are hard, so ŠKODA Finance specialises in providing funding solutions for ŠKODA drivers. Regardless of whether you're a private or business user, you can choose from a range of funding options.

Finance products available are:

- Solutions – a personal contract plan
- Hire purchase
- Lease purchase
- Finance lease
- Contract hire

With all ŠKODA Finance products you can choose a fixed-cost maintenance plan designed to help you budget accurately. No matter what finance product you choose, your local ŠKODA retailer will be able to provide you with a personalised quote that could meet your budget and vehicle needs. ŠKODA Finance is a trading name of Volkswagen Financial Services (UK) Limited, Brunswick Court, Yeomans Drive, Blakelands, Milton Keynes MK14 5LR. Registered in England number 2835230.

Adding that little extra to your car

If the standard specification and factory fitted options aren't enough for you, then why not take a look at our range of retailer fitted accessories? A separate accessories brochure can be found at your local retailer, or can be ordered by phoning our call centre, or by going on-line at www.skoda.co.uk

ŠKODA Insurance

We want you to start enjoying your new car from day one and thanks to ŠKODA Insurance complimentary seven day cover you can. Call free on 0800 316 7895, provide us with a few details, and we'll send a cover note to your retailer. They will then tax your car and you can drive it away. Telephone lines are open Monday to Friday 8am – 9pm and Saturday 9am – 5pm.

For details of our full range of insurance products visit insurewithskoda.co.uk. You can get an annual car insurance quote for your ŠKODA and buy it online too.

ŠKODA Insurance is a trading name of Volkswagen Insurance Service (Great Britain) Limited, an appointed representative of Volkswagen Financial Services (UK) Limited, registered in England number: 2835230 (registered office: Brunswick Court, Yeomans Drive, Blakelands, Milton Keynes MK14 5LR). ŠKODA Insurance motor insurance is sold, underwritten and administered by Allianz Insurance plc, registered in England number: 84638 (registered office: 57 Ladymead, Guildford, Surrey GU1 1DB). Both organisations are authorised and regulated by the Financial Services Authority (FSA), whose registration numbers are 311988 and 121849 respectively. Authorisation details can be checked on the FSA's register at fsa.gov.uk or call 0845 606 1234. Volkswagen Financial Services (UK) Limited and Allianz Insurance plc are not part of the same corporate group.

Extended warranty

Exclusions and limitations

Wear and tear components will only be considered under the terms of the warranty for the first of six months or 6,500 miles, whichever is soonest. These include, but are not limited to brake linings and disc pads, clutch release bearings, clutch pressure plates and centre plates, tyres, wiper blades, seat and backrest covers, floor coverings, spark plugs, batteries for key fobs and alarms, light bulbs and shock absorbers.

Mechanical adjustments including but not limited to adjustments to doors, flaps, boot lids, bonnets and sunroof, brake adjustment, clutch adjustment, v belt adjustment, ignition adjustment, headlight adjustment, steering geometry adjustments and wheel balancing are excluded.

Damage (including but not limited to the following) is excluded:

- Damage caused by your failure to take all reasonable steps to prevent mechanical damage from occurring.
- Damage or defects caused by not having the vehicle serviced in accordance with the manufacturer’s guidelines.
- Damage or defects caused by improper use of the vehicle, neglect or use of the vehicle for motor sports activities.
- Damage caused by an accident.
- Damage to paintwork or chrome caused by external influences, such as climatic, chemical or industrial pollution.
- Damage resulting from the use of non-original replacement parts.

Routine maintenance and servicing is not covered by the warranty. Incidental or consequential costs such as hotel charges, car hire, loss of personal effects or income are not recoverable under the terms of the warranty.

Calculating your tax liability

To find out how much tax you will pay, simply take the P11D value, then multiply this figure by the BiK percentage. Then simply multiply this figure by 20% or 40% depending on the level of income tax that you pay.

Please note if your employer provides you with free fuel, this is treated as an additional taxable benefit.

For more information on company car taxation please visit the HM revenue and customs website www.hmrc.gov.uk

BiK calculation example- Roomster S 1.2 12v 69PS 5spd	
P11D value	£11,665.00
Company Car BiK tax based on CO ₂ emission level	19%
Taxable BiK (for 2012/2013 tax year): 19% of £11,665.00	£2,216.35
Annual company car tax (2012/13)	
20% Income Tax: 20% of £2,216.35	£443.27
40% income Tax: 40% of £2,216.35	£886.54
Monthly company car tax (2012/13)	
20% Income Tax: £443.27 divide by 12 months	£36.94
40% income Tax: £886.54 divide by 12 months	£73.87



The information in this brochure referring to specification, design, equipment, material and external appearance relates to the time at which this brochure was printed. Whilst every effort is made to ensure its accuracy, the information in this brochure is not binding and is subject to alteration. Some illustrations in this brochure depict left hand drive models, with both standard and optional equipment shown. Please confirm exact specifications, prices and colour availability with your SKODA retailer who will be notified of any specification changes as they occur.

Edition: UK 11/12

Information: 08457 745 745

Internet: www.skoda.co.uk

E-mail: customerservices@skoda.co.uk

Welcome to your SKODA retailer