

SIMPLY CLEVER

ŠKODA



The ŠKODA Rapid



Effective: March 2013

Welcome to the New ŠKODA Rapid

The ŠKODA Rapid is the first car to truly embody ŠKODA's new design language, characterised by clean lines and sharp angles. The stunning lines of the car allow light and darkness to interplay, creating a dynamism and timeless elegance.

At the same time, the Rapid remains very loyal to ŠKODA's core values, offering outstanding space, fantastic value for money and a car which has been designed at every stage with the driver and passengers in mind.

Read on to find out more about the Rapid's stunning exterior design, ample useable space and abundance of thoughtful features and equipment.





The New ŠKODA Rapid
Timeless. Precise. Dynamic.

Rapid Exterior

The Rapid is the first model to embody ŠKODA's new design language, characterized by crisp lines that help to define the clean surfaces.

The new ŠKODA design DNA features crystalline lines, surfaces and angles which are inspired by traditional Bohemian crystal production – proudly remembering ŠKODA's strong Czech heritage. Like the Rapid, Bohemian crystal is recognised by its sharp and precise angles which emphasise light and shade.





The face of Rapid has been designed to give a strong, **broad road presence**. The dark fascia contrasts perfectly with the chrome grille surround, creating a modern, yet timeless look. The new grille has the traditional 19 fins found on all ŠKODAs, but it is now an integral part of the model's nose and is not lifted with the bonnet.

A honeycomb grille brings a **sporty edge** to the Rapid's look whilst the wide, angular lights visually widen the front giving a more dominating look.



ŠKODA's **fresh new badge** takes pride of place on the Rapid's bonnet. In chrome and black, it ties back in to the light and darkness created by Rapid's sharp lines and angles.



Rapid's side profile is not typical of a **roomy hatchback**, but is more like a **sleek coupe**. The black B pillar visually lengthens the car, whilst the strong shoulder line of Rapid is defined and precise, giving the car a powerful dynamism and the appearance of being in motion, even when stationary.



The rear of Rapid is where the marriage of **modern style and functionality** is most evident. The strong shoulder line meets the distinctive ŠKODA C-shaped rear light and crystalline angles dissect the large boot opening ensuring a strong appearance without being bulky.



A remarkable 550 litres of storage space (530 litres with a spare wheel) is made even more cavernous **with the rear seats down, offering 1490 litres of space.** Add a wide hatchback opening and optional bag hooks and removable side storage panels and this Rapid really is ready for anything you throw at (or in) it.

As well as offering comfort, this armrest opens to offer yet another **clever storage solution.** (Standard on Elegance, optional on S and SE).



The **rear seat armrest** with an integrated **holder for two drinks** gives rear seat passengers the opportunity to enjoy the ride with refreshments. (Optional on SE and Elegance).

On those odd occasions when even the Rapid's vast boot isn't enough space, **through load provision gives** you added flexibility. (Optional on SE and Elegance).



The **Net Programme**, which consists of two vertical nets and one horizontal net on the floor, enables you to easily secure items so they do not shift while driving (Optional).



Glasses storage compartment, (standard on SE and Elegance).



The Rapid's interior is ergonomically designed to ensure your driving experience is as comfortable as possible, with all controls within easy reach. In keeping with the exterior design, the interior is **precise** with **sharp** angles but also, **spacious and functional**. Everything that a ŠKODA customer has come to expect. With **phenomenal head room** and **outstanding rear knee space**, this car is perfect for both business trips and family time.

Model shown is Rapid Elegance with optional 'Amundsen' sat nav, DAB, climate control air conditioning and metallic paint.

Reflecting the curve of the steering wheel, the **instrument panel** is clearly laid out and provides key driving data. The trip computer on S shows the time, gear change recommendation and fuel gauge. The Maxi Dot computer from SE also shows average fuel consumption and allows the car's electronic system settings to be adjusted.



'Amundsen' satellite navigation is available as an option on SE and Elegance. 'Amundsen' has integrated maps for Western Europe and a 5" touchscreen and comes with **digital radio (DAB)**.



The **7-speed DSG** (Direct Shift Gearbox), supplied with the 1.4 TSI 122PS engine, combines the advantages of mechanical and conventional automatic transmissions.

When changing gear, the DSG is able to keep the engine at optimal revolutions, resulting in **fast and smooth gear change** and improved fuel efficiency.



Manual **air conditioning** is standard from SE, but should you wish you can upgrade to climate control air conditioning which will maintain the temperature you select by regulating the fan speed.

ŠKODA Simply Clever Features

At every stage of its production, the Rapid's designers have kept the driver and passengers in mind. The result of this thoughtfulness is "**Simply Clever**" features throughout the car. Just little things to help make your life easier.

This handy storage compartment under the front seat easily holds a **safety vest** so if you do need it, it is always close to hand. (vests available to purchase through ŠKODA Genuine Accessories).



Ticket holder at A-pillar. Happily holds parking permits and tickets.

Reversible boot floor. This smart feature lets you easily choose between a carpet or rubber boot floor. Taking suitcases to the airport? Go for carpet. Transporting wet wellies and a muddy dog? Flip it to rubber! (Optional).



Every Rapid comes with an **ice scraper in the fuel filler cap** for those cold winter mornings.



MDI (mobile device interface) Standard on SE and Elegance, connect your mp3 player through the USB and control the music through your stereo controls. Optional on S, standard on SE and Elegance.



Luggage holder hooks in boot. (Optional as part of the boot package).

ŠKODA Rapid Safety

The Rapid has been built with a proven array of safety features. Whilst you hopefully won't need them, you can feel comfortable knowing that should you find yourself in an extreme situation, you can rely on the Rapid.



Driver and passenger front, side and curtain airbags. Should an impact occur, large-volume airbags activate in conjunction with the front seat belt pretensioners. This will anchor you in the middle of the seat and cushion you to reduce injury.



ESC incl. ABS, MSR, ASR, EDS & HBA. Electronic Stability Control is designed to stabilise the dynamic handling response of the vehicle by counteracting any tendency towards oversteer or understeer.

Cornering front fog lights increase visibility at low speeds by illuminating the area the car is about to turn into (standard on Elegance).



Families that fully occupy the car will certainly appreciate the option of equipping the car with a **third headrest in the rear**, designed for the passenger in the middle seat.

The ŠKODA Rapid S

	CO ₂ (g/km)	VED Band	Insurance Group (50)	Recommended Basic	VAT	RRP	Recommended OTR	Business user information	
								BiK 2013/14	P11D Value
1.2 75PS	137	E	7E	£10,179.17	£2,035.83	£12,215.00	£12,900.00	19%	£12,725.00
1.2 TSI 86PS	119	C	10E	£10,945.83	£2,189.17	£13,135.00	£13,700.00	15%	£13,645.00
1.2 TSI 86PS GreenTech	114	C	10E	£11,154.17	£2,230.83	£13,385.00	£13,950.00	14%	£13,895.00
1.6 TDI CR 105PS DPF	114	C	16E	£12,987.50	£2,597.50	£15,858.00	£16,150.00	17%	£16,095.00

Standard Equipment

Exterior

15" 'Dakara' steel wheels
(6) x 15 185/60 R15 H)
Chrome surround radiator grille

Interior

Central console with cupholder
Dust & pollen filter
Outdoor temperature gauge
Passenger vanity mirror on sunscreen
Rear backrest split & folding (60/40)
Storage compartments
in door panelling
Two interior lights

Safety

3 point rear seat belts x3
Airbags
-Driver & Passenger front
-Driver & Passenger side
-Curtain
-Passenger airbag
deactivation switch
Alarm with interior monitoring,
back up horn, towing protection
& SAFE system
Anti-misfuel insert
(petrol engines)
Daylight running lights
(with deactivation)
Disc brakes rear (except 1.2 75PS)
Driver seatbelt warning light
ESC incl. ABS, MSR, ASR, EDS & HBA
Fuel cut off in event of an accident
Height adjustable halogen headlights
Height adjustable headrests
(2x front, 2x rear)
ISOFIX preparation on back seats
Remote central door locking
Safety vest holder
Third rear brake light
Two tone horn
Tyre repair kit (no spare wheel)

Comfort & Convenience

12V socket on central console
4 loudspeakers
Electric windows in front
Electrically heated
& adjustable door mirrors
Heated rear window
Height & reach adjustable
steering wheel
Height adjustable driver's seat
Holder for parking tickets
Power steering
Radio 'Swing' – 2 DIN with CD
player (can play MP3 files on CD)
(second aerial)
Windscreen wipers (front & rear) with
washers & intermittent control

Servicing & Warranty

3 years / 60,000 mile warranty
(extended warranty is available)
Flexible servicing (Fixed servicing is
also available - see page 35)

GreenTech only

Brake energy recovery
Stop/start system



For offers visit www.skoda.co.uk/offers

The ŠKODA Rapid SE

	CO ₂ (g/km)	VED Band	Insurance Group (50)	Recommended Basic	VAT	RRP	Recommended OTR	Business user information	
								BiK 2013/14	P11D Value
1.2 TSI 86PS	119	C	10E	£11,737.50	£2,347.50	£14,085.00	£14,650.00	15%	£14,595.00
1.2 TSI 86PS GreenTech	114	C	10E	£11,945.83	£2,389.17	£14,335.00	£14,900.00	14%	£14,845.00
1.2 TSI 105PS	125	D	13E	£12,320.83	£2,464.17	£14,785.00	£15,350.00	17%	£15,295.00
1.2 TSI 105PS GreenTech	118	C	13E	£12,529.17	£2,505.83	£15,035.00	£15,600.00	15%	£15,545.00
1.4 TSI 122PS DSG	134	E	16E	£13,708.33	£2,741.67	£16,450.00	£17,135.00	18%	£16,960.00
1.4 TSI 122PS DSG GreenTech	127	D	18E	£13,916.67	£2,783.33	£16,700.00	£17,265.00	19%	£17,210.00
1.6 TDI CR 105PS DPF	114	C	15E	£13,779.17	£2,755.83	£16,535.00	£17,100.00	17%	£17,045.00
1.6 TDI CR 105PS DPF GreenTech	106	B	15E	£13,987.50	£2,797.50	£16,785.00	£17,350.00	15%	£17,295.00

Standard Equipment (over S)

Exterior

15" 'Carme' alloys with anti theft
wheel bolts (6) x 15 185/60 R15 H)
Body coloured exterior
mirrors & door handles
Tinted glass

Interior

Glasses storage compartment
Leather 4 spoke steering wheel
Leather handbrake lever
Leatherette gaiter
Pocket on rear of front seats

Safety

Front fog lights
Hill hold control (1.4TSI DSG only)

Comfort & Convenience

MDI (mobile device interface)
6 loudspeakers
Cruise control
Manual air conditioning
Rear electric windows
Trip computer MAXI DOT
Telephone connection
Bluetooth® GSM II



For offers visit www.skoda.co.uk/offers

The ŠKODA Rapid Elegance

	CO ₂ (g/km)	VED Band	Insurance Group (50)	Recommended Basic	VAT	RRP	Recommended OTR	Business user information	
								BiK 2013/14	P11D Value
1.2 TSI 105PS	125	D	13E	£12,945.83	£2,589.17	£15,535.00	£16,100.00	17%	£16,045.00
1.2 TSI 105PS GreenTech	116	C	tbc	£13,154.17	£2,630.83	£15,785.00	£16,350.00	15%	£16,295.00
1.4 TSI 122PS DSG	134	E	16E	£14,333.33	£2,866.67	£17,200.00	£17,885.00	18%	£17,710.00
1.4 TSI 122PS DSG GreenTech	124	D	tbc	£14,541.67	£2,908.33	£17,450.00	£18,015.00	17%	£17,795.00
1.6 TDI CR 105PS DPF	114	C	15E	£14,404.17	£2,880.83	£17,285.00	£17,850.00	17%	£17,795.00
1.6 TDI CR 105PS DPF GreenTech	104	B	tbc	£14,612.50	£2,922.50	£17,535.00	£18,100.00	15%	£18,045.00

Standard Equipment (over SE)

Exterior

16" 'Dione' alloys with anti theft wheel bolts (7) x 16 215/45 R16 86H)

Interior

Multi function steering wheel (radio & telephone controls)
 Chrome interior surrounds
 Floor mats - front & rear
 Front centre armrest with storage box

Safety

Cornering front fog lights

Comfort & Convenience

Acoustic rear parking sensors (x3)
 Climate control air conditioning
 Height adjustable passenger seat



Elegance with ivory upholstery and optional 'Amundsen' sat nav and climate control air conditioning.



For offers visit www.skoda.co.uk/offers



Image shows optional equipment: Red sports seats, 'Amundsen' touchscreen satellite navigation with DAB digital radio and climate control air conditioning.

The ŠKODA Rapid trims & wheels

Rapid S

Standard



15" 'Dakara' steel wheels



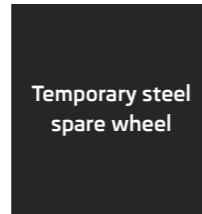
S Onyx

Option



15" 'Carme' alloy wheels

Available on all models



Temporary steel spare wheel

Rapid SE

Standard



SE Onyx



SE Grey



15" 'Carme' alloy wheels

Option



Onyx/grey sports seats



Red sports seats



17" 'Camelot' alloys



16" 'Antia' alloy wheels

Rapid Elegance

Standard



Elegance Ivory

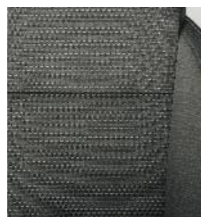


Elegance Onyx



16" 'Dione' alloy wheels

Option



Onyx/grey sports seats



Red sports seats



17" 'Camelot' alloy wheels

The ŠKODA Rapid colours



1. Candy White



2. Sprint Yellow special



3. Corrida Red



4. Pacific Blue



5. Brilliant Silver metallic



6. Arctic Green metallic



7. Rallye Green metallic



8. Denim Blue metallic



9. Cappuccino Beige metallic



10. Steel grey metallic



11. Petrol Blue metallic



12. Rosso Brunello metallic



13. Black Magic pearl effect

Factory Fitted Optional Equipment

Options	S	SE	Elegance	Basic	RRP
Wheels and Towing					
15" 'Carme' alloy wheels with anti-theft wheel bolts (185/60 R15 H)	○	●	-	£333.33	£400.00
16" 'Antia' alloy wheels with anti-theft wheel bolts (215/45 R16 86H)	-	○	-	£250.00	£300.00
17" 'Camelot' alloy wheels with anti-theft wheel bolts (215/40 R17 V) Upgrade from 15" wheels	-	○	-	£500.00	£600.00
17" 'Camelot' alloy wheels with anti-theft wheel bolts (215/40 R17 V) Upgrade from 16" wheels	-	-	○	£250.00	£300.00
Temporary space save steel spare wheel for 16" or 17" wheels*	-	○	○	£62.50	£75.00
Temporary steel spare wheel for 15" wheels*	○	○	-	£62.50	£75.00
Tow bar (removeable)	○	○	○	£375.00	£450.00
Tow bar preparation	○	○	○	£129.17	£155.00

Exterior					
Body coloured protective side mouldings	-	○	○	£62.50	£75.00
Metallic paint	○	○	○	£412.50	£495.00
Sunset glass from B-pillar back	-	○	○	£166.67	£200.00

Interior					
4 spoke leather steering wheel	○	●	-	£125.00	£150.00
Boot package <i>Boot net, wheel arch storage panel and boot hooks</i>	○	○	○	£83.33	£100.00
Double sided boot floor	○	○	○	£62.50	£75.00
Front armrest with storage box	○	○	●	£83.33	£100.00
Height adjustable passenger seat	-	○	●	£125.00	£150.00
Rear armrest with 2 cupholders and load-through provision	-	○	○	£145.83	£175.00
Smoker's pack <i>Front ashtray and lighter</i>	○	○	○	£41.67	£50.00
Sports seats	-	○	○	£250.00	£300.00
Textile floor mat set	○	○	●	£62.50	£75.00

Entertainment and Communication					
'Amundsen' touchscreen satellite navigation with DAB digital radio	-	○	○	£458.33	£550.00
MDI (mobile device interface)	○	●	●	£83.33	£100.00

- Not available
- Option
- Standard

* Spare wheels are restricted to 50mph

Factory Fitted Optional Equipment (continued)

Options	S	SE	Elegance	Basic	RRP
Safety and Security					
Third rear headrest	○	○	○	£58.33	£70.00
Tyre pressure monitor with hill hold control	○	○	○	£108.33	£130.00

Driver Assistance					
Rear parking sensors	○	○	●	£291.67	£350.00

Comfort and Convenience					
Climate control air conditioning	-	○	●	£250.00	£300.00
Heated front seats and heated washer nozzles	-	○	○	£166.67	£200.00
Telescopic front headlight washers	-	○	○	£83.33	£100.00

Service and Warranty					
1 year warranty extension <i>Total 4 years or 80,000 miles</i> ◊	○	○	○	£212.50	£255.00
2 year warranty extension <i>Total 5 years or 100,000 miles</i> ◊	○	○	○	£437.50	£525.00
Service plan <i>Total 3 years or 30,000 miles</i>	○	○	○	£415.83	£499.00



Telescopic front headlight washers (Optional on SE and Elegance)



'Amundsen' satellite navigation & digital radio (DAB) (Optional on SE and Elegance)



Sports Seats (Optional on SE and Elegance)

◊ For terms and conditions please see page 35.

Personalisation with ŠKODA Genuine Accessories



The **ISOFIX DUO plus Top Tether child seat** will ensure the maximum safety and comfort of your little passengers when travelling because, in addition to ISOFIX belts, it is attached using the Top Tether system on its rear side. The seat has three adjustable positions (sitting, resting, and lying) and is designed for children from 9 kg up to 18 kg. **£420**



Door sill covers, black, effectively protect the door sills against mechanical damage from getting in and out of the car. **£40**

The **Thermoelectric cooler** with a capacity of 15 litres enables you to primarily keep food fresh and refreshing. The cooler can keep items cool up to 20°C below the ambient outside temperature. Switching it to a thermobox gives you heating of 65°C. **£117**



17" Ray black alloy wheel **£154** each



Woven carpet mats will help you keep the car interior clean. In addition to easy care they have outstanding durability. **£40**

Towbar and electrics. **£330**



Head rest coat hanger. **£17**



Rubber insert for the luggage compartment, which can be easily cleaned with water, will protect upholstery from becoming dirty. **£30**



The **net programme** reliably prevents the shifting of smaller items. **£35**

The **Removable luggage compartment cover** can be utilised for transporting light items, which can be removed quickly and easily. **£80**

These products are ŠKODA Genuine Accessories. You can also find information on the complete assortment of accessories at your authorised ŠKODA retailer.

The ŠKODA Rapid Engine Specifications

Petrol Engines	1.2 MPI 75PS	1.2 TSI 86PS	1.2 TSI 105PS	1.4 TSI 122PS DSG
Trim level	S	S/SE	SE/Elegance	SE/Elegance
Type	3-cylinder in-line engine	4-cylinder in-line engine	4-cylinder in-line engine	4-cylinder in-line engine
Transverse-mounted	Yes	Yes	Yes	Yes
Fuel injection type	Multi point fuel injection	Direct fuel injection	Direct fuel injection	Direct fuel injection
Cubic capacity (cc)	1,198	1,197	1,197	1,390
Bore x stroke (mm)	76.5 x 86.9	71.0 x 75.6	71.0 x 75.6	76.5 x 75.6
Air pollution regulation	EU 5	EU 5	EU 5	EU 5
Compression ratio	10.5:1	10:1	10:1	10:1
Drag co-efficient (Cw)	0.3	0.3	0.308	0.297
Performance				
Max speed mph (km/h)	109 (175)□	114 (183)□	121 (195)□	128 (205)□
Acceleration 0-62mph (sec)	13.9	11.8	10.4	9.5
Max . Performance (PS/rpm)	75/5,400	86/4,800	105/5,000	122/5,000
Max. torque (Nm/rpm)	112/3750	160/1,500-3,500	175/1,550-4,100	200/1,500-4,000
Fuel consumption mpg (l/100km)		GreenTech	GreenTech	GreenTech
Urban*	34.9 (8.1)	43.5 (6.5)	47.9 (5.9)	40.9 (6.9)
Extra urban*	61.4 (4.6)	64.2 (4.4)	65.7 (4.3)	61.4 (4.6)
Combined*	47.9 (5.9)	55.4 (5.1)	57.7 (4.9)	52.3 (5.4)
CO ₂ emissions (g/km)*	137	119	114	125

□ Where law permits.

Diesel Engines	1.6 TDI CR 105PS DPF
Trim level	S/SE/Elegance
Type	4-cylinder in-line engine
Transverse-mounted	Yes
Fuel injection type	High pressure direct injection
Cubic capacity (cc)	1,598
Bore x stroke (mm)	79.5 x 80.5
Air pollution regulation	EU 5
Compression ratio	16:1
Drag co-efficient (Cw)	0.301
Performance	
Max speed mph (km/h)	118 (190)□
Acceleration 0-62mph (sec)	10.6
Max . Performance (PS/rpm)	105/4,400
Max. torque (Nm/rpm)	250/1,500-2,500
Fuel consumption mpg (l/100km)	GreenTech
Urban*	50.4 (5.6)
Extra urban*	76.3 (3.7)
Combined*	64.2 (4.4)
CO ₂ emissions (g/km)*	114

□ Where law permits.

Power transmission

Clutch Hydraulically-activated single-plate dry clutch with diaphragm spring, asbestos-free coating.

Manual transmission Five-speed manual transmission, fully synchronised with direct gearshift, six speed manual transmission.

7 spd DSG transmission - two coaxial dry multiple-disc clutch, electro-hydraulically operated.

Please note: With all manual gear boxes the clutch needs to be depressed to start the engine.

Number of gears

5 speed manual 1.2 MPI 75PS,
1.2 TSI 86PS,
1.6 TDI CR 105PS

6 speed manual 1.2 TSI 105PS

7 speed DSG 1.4 TSI 122PS

Chassis

Front axle/rear axle McPherson axle with the bottom triangular control arms and independent multi-link suspension with one longitudinal and two cross arms and torsion stabiliser.

Suspension Coil springs, telescopic shock absorbers, rear springs located outside the shock absorbers (gas shock absorbers in rear).

Braking system Hydraulic dual circuit brake system with diagonal interconnection, vacuum assisted dual rate brake booster.

Front brakes Disc brakes, with hollow discs, internal cooling and single-piston floating calliper.

Rear brakes Disc brakes with full discs and single-piston floating callipers.

Rear brakes (1.2 75PS) Drum brakes.

Handbrake Mechanical handbrake operating on rear wheels.

Steering Direct rack and pinion steering with electromechanical power steering.

Turning circle (m) 10.2

Tank

Fuel tank content (litres) 55 litres

Fuel Lead-free petrol with RON 95 or Lead-free petrol with RON 91[†]. Diesel (2.0 TDI CR 140PS) CZ 49.

Body type Five-door, five-seat, double-space steel bodywork, fully galvanized body.

Official fuel consumption for the Rapid range in mpg (litres/100km):

urban 34.9 (8.1) - 57.6 (4.9);
extra urban 58.9 (4.8) - 80.7 (3.5);
combined 47.9 (5.9) - 70.6 (4.0).

CO₂ Range 137 - 106 g/km

[†]Using low-octane fuel may affect engine performance.

We measure the maximum power output figures of our engines in PS or Pferdestärke (horse strength in German), which is the metric equivalent of bhp. To convert from metric to imperial horsepower, divide the PS figure by 1.0139.

* Official fuel consumption according to EU Directive 99/94.

The consumption calculation according to 1999/100/EC is based on the actual unladen weight of the vehicle. Additional specifications can lead to a higher weight class and hence to consumption figures of this higher weight class. The driving style, road and traffic conditions, environmental influences and vehicle condition can in practice lead to consumption figures which may differ from those calculated in this standard.



Measurements and Weights

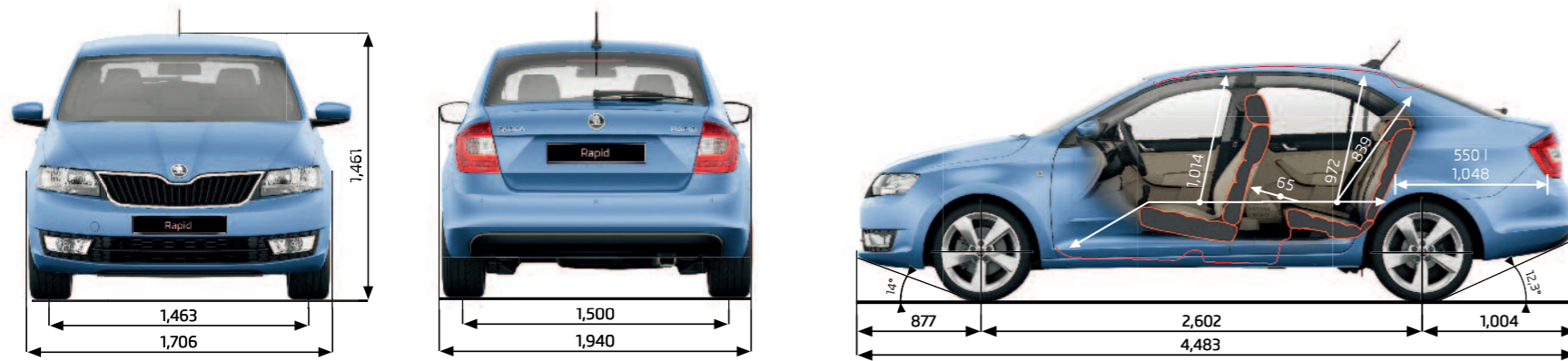
The ŠKODA Rapid Hatchback

Exterior dimensions

Length (mm)	4,483
Width (mm)	1,706
Height (at kerb weight) (mm)	1,461
Wheel base (mm)	2,602
Ground clearance (at kerb weight) (mm)	136

Interior dimensions

Luggage capacity, seats up (litres)	550
Luggage capacity, seats down (litres)	1,490
Luggage capacity, seats down (litres) with spare wheel	530
Rear knee space (mm)	65
Rear head space (mm)	972



All figures are in mm, unless otherwise stated

	1.2 MPI 75PS Petrol	1.2 TSI 86PS Petrol	1.2 TSI 105PS Petrol	1.4 TSI 122PS DSG Petrol	1.6 TDI CR 105PS DPF Diesel
Weight					
Kerb weight* (kg)	1,065	1,086	1,100	1,161	1,179
Total weight (kg)	1,600	1,621	1,635	1,696	1,714
Payload** (kg)	535	535	535	535	535
Max roof load (kg)	75	75	75	75	75
Towing unbraked (kg)	570	580	580	610	620
Towing braked (kg)	750	900	1,100	1,200	1,200
Nose weight (kg)	50	50	50	50	50

All measurements and weights are correct at time of going to print but may be subject to change and may vary according to passengers and load in vehicle.

*Kerb weight is the mass of the vehicle with body work in running order. **Payload includes driver (at 75kg) & equipment.



ŠKODA Finance. Your journey, your choice.

ŠKODA Finance like to do things a little differently, that's why for many years we've specialised in providing simple and convenient funding options for ŠKODA drivers. It's what we know.

ŠKODA Solutions is all about you; a flexible, competitive fixed-rate plan designed around you and your budget, putting you firmly in the Rapid driving seat.

Solutions is different because you defer a proportion of the car's value until the end of the agreement, giving you significantly lower monthly repayments than if you'd taken out a loan... ever heard of a bank being so imaginative?

Solutions is totally flexible. You get to choose the size of your deposit (from as little as one monthly payment), and a repayment period which suits you and at the end of the term you have 3 options to choose from.



1 Part-exchange the car for a new ŠKODA on a new Solutions contract.



2 Pay the optional final payment so that you own the car.*



3 Or return the car to us (subject to terms and conditions).

ŠKODA Finance also offers:

• Hire purchase • Contract hire • Service plans • Insurance

Speak to your ŠKODA retailer for your personalised quotation today.

*Subject to payment of the option to purchase fee. An offer of finance depends on certain conditions. Subject to status, indemnities may be required. Available to over 18's in the UK only. ŠKODA Finance.



DEPOSIT

As little as one repayment



BALANCE

A flexible repayment period (18-42 months)



OPTIONAL FINAL PAYMENT

3 choices at the end of the agreement

ŠKODA Insurance. Have a safe trip.

We want you to start enjoying your new car from day one and thanks to ŠKODA Insurance complimentary seven day cover you can. Call free on 0800 316 7895, provide us with a few details, and we'll send a cover note to your retailer. They will then tax your car and you can drive it away. Telephone lines are open Monday to Friday 8am - 9pm and Saturday 9am - 5pm.

For details of our full range of insurance products visit www.insurewithskoda.co.uk You can get an annual car insurance quote for your ŠKODA and buy it online too.

ŠKODA Finance is a trading name of Volkswagen Financial Services (UK) Limited, Brunswick Court, Yeomans Drive, Blakelands, Milton Keynes MK14 5LR. Registered in England number 2835230.

ŠKODA Insurance is a trading name of Volkswagen Insurance Service (Great Britain) Limited, an appointed representative of Volkswagen Financial Services (UK) Limited, registered in England number: 2835230 (registered office: Brunswick Court, Yeomans Drive, Blakelands, Milton Keynes MK14 5LR). ŠKODA Insurance motor insurance is sold, underwritten and administered by Allianz Insurance plc, registered in England number: 84638 (registered office: 57 Ladymead, Guildford, Surrey GU1 1DB). Both organisations are authorised and regulated by the Financial Services Authority (FSA), whose registration numbers are 311988 and 121849 respectively. Authorisation details can be checked on the FSA's register at fsa.gov.uk or call 0845 606 1234. Volkswagen Financial Services (UK) Limited and Allianz Insurance plc are not part of the same corporate group.

Owning a ŠKODA

We make sure it's easy, fun, and stress-free.



ŠKODA customer service is officially award-winning. We have been voted Number 1 in the 2012 Driver Power survey for the fourth year running.



Network capability

You can enjoy our award-winning customer service through our network of around 165 Authorised Repairers.

As a ŠKODA customer, you will be looked after by your retailer from the moment you walk through the door and throughout the life of your ŠKODA. Your new Rapid will be serviced and maintained to the highest standards by specially trained ŠKODA technicians. And when you need a spare part, you'll be happy to know that most are held in stock, or can be ordered within 24 hours.

The ŠKODA Customer Promise is a commitment from our retailers to offer:

- > Care and consideration for you and your car
- > A flexible and convenient service
- > Expertise and attention to detail
- > A clear explanation of our work

Roadside Assistance

A three year, European-wide, unlimited mileage ŠKODA Assistance policy comes free of charge with every new SKODA provided by the RAC through a dedicated team.

Provided through the RAC, there's a team of specially trained Technicians carrying the right diagnostic equipment and parts to get you back on the road as quickly as possible in the unfortunate event of a breakdown. They'll even help you if you fill up with the wrong fuel, lose your car keys, or get a puncture.

Warranty

When you buy your new ŠKODA through our authorised retailer network, it is automatically covered by a three year, 60,000 mile manufacturer's warranty.

There's no mileage limit on the warranty in the first two years and for additional peace of mind there's a 12 year body protection warranty.

You can even extend your warranty to four or five years, see the trim level pages for prices and page 35 for further details.

Warranty cover from new			
First 2 years	First 3 years	4-5 years	Up to 12 years
Unlimited mileage	3 years or 60,000 miles, whichever is sooner	Optional Extended Warranty	Body Protection Warranty

Further information

You can find lots of additional information about owning a ŠKODA on our website at www.SKODA.co.uk. Our retailers are always happy to help with any questions, backed up our dedicated Customer Service Centre. We look forward to hearing from you soon.

Call: 08457 745 745
 Email: customerservices@skoda.co.uk
 Open 8.30am - 5.30pm

Technical glossary

ABS: the anti-lock braking system prevents the wheels from locking during heavy or emergency braking, enabling the vehicle to remain steerable. When braking, wheel speed sensors measure the road wheel speed and should one or more wheels start to lock the system reduces brake pressure to that wheel.

Elements of the ABS System :-

- Dual Rate Vacuum Brake Boosters**: increases brake effort under emergency braking conditions.

- EBC**: Electronic brake control. The engine brake torque control regulates the power supply by intervening with the engine management system.

- EBD** (aka EBV): Electronic Brake Distribution automatically distributes different pressures to the front and rear brakes to stop the rear wheels from locking up under heavy braking. It also compensates for loaded and unloaded vehicles therefore doing away with the need for a Load Sensing Valve on the rear axle.

CAN Bus: the CAN Bus is an electronic data bus which links the various different electronic control systems in the car. It ensures ideal co-ordination between systems and reduces the amount of wiring needed in the car.

Fuel cut-out: should one or more of the airbags inflate after an accident, this system automatically cuts out the fuel supply, thus preventing subsequent leakage of the diesel or petrol.

Trip Computer: the trip computer not only features an impressive range of data displays, operating it is simplicity itself. A multifunction touch key enables you to call up all relevant data on the easy-to-read display. Features include external temperature, time, current fuel consumption, average fuel consumption, miles driven and average speed.

DPF: diesel particulate filter is part of the exhaust system responsible for cleaning the engine exhaust gases before they enter the atmosphere. The DPF catches soot particles emitted in the exhaust gas and it works in conjunction with the catalytic converter, which reduces the amount of harmful gases entering the atmosphere. The DPF must periodically be emptied of the soot particles, a process known as regeneration. This involves elevated exhaust system temperatures. A driving style is required during regeneration, where a constant vehicle speed above 37 mph must be maintained. This does not always suit customers who make frequent short journeys or experience stop/start driving or drive within inner-city or urban areas.

CR: the completely new range of diesel engines are built on a system of Common-Rail fuel injection. The diesel engines have a high-pressure common rail direct injection fuel system and four-valve technology. As a result, the new engines are much quieter, more refined in their operation and consume less fuel, compared to the Pump Duse engines and significantly reduce emissions.

ESC: electronic stability control is designed to stabilise the dynamic handling response of the vehicle by counteracting any tendency towards oversteer or understeer. The ESC constantly compares the actual movement of the vehicle with predetermined values and according to the situation ESC reacts by braking each wheel individually (according to direction of slip) and automatically adjusting the engine’s output.

Elements of ESC system:-

- ASR**: anti-slip regulation traction control ensures the Rapid’s stability when pulling away or accelerating. If the engine power or torque being transmitted to the drive wheels is too great, for example on a slippery road surface, engine torque is automatically reduced until optimum road holding returns, thus preventing wheelspin. A light indicates whether the ASR system is on. It can be manually switched off.

- MSR**: the engine torque control system recognises when the wheels are subject to too much slippage and regulates the power supply by intervening in the engine management system. This prevents wheelspin when, for example, changing down on a smooth or wet road surface. MSR is a constituent part of the ASR system.

- EDL**: the electronic differential lock continually compares the rpm of the drive wheels, and if it identifies a difference between them which could lead to an individual wheel spinning, for example if the two wheels are on different types of surface or accelerating on wet leaves, the system brakes the wheel affected until uniform rpm of all drive wheels is restored.

- HBA**: Hydraulic brake assistant increases the optimal build-up of brake power. It ensures complete use of the brake system potential, thus shortening the braking distance.

- HHC**: Hill hold control allows for a safe hill start by holding the brake for a small amount of time, reducing the risk of unintentional reversing or roll back.

Warranty

Exclusions and limitations

Wear and tear components will only be considered under the terms of the warranty for the first of six months or 6,500 miles, whichever is soonest. These include, but are not limited to brake linings and disc pads, clutch release bearings, clutch pressure plates and centre plates, tyres, wiper blades, seat and backrest covers, floor coverings, spark plugs, batteries for key fobs and alarms, light bulbs and shock absorbers.

Mechanical adjustments including but not limited to adjustments to doors, flaps, boot lids, bonnets and sunroof, brake adjustment, clutch adjustment, v belt adjustment, ignition adjustment, headlight adjustment, steering geometry adjustments and wheel balancing are excluded.

Damage (including but not limited to the following) is excluded:

- Damage caused by your failure to take all reasonable steps to prevent mechanical damage from occurring.
- Damage or defects caused by not having the vehicle serviced in accordance with the manufacturer’s guidelines.
- Damage or defects caused by improper use of the vehicle, neglect or use of the vehicle for motor sports activities.
- Damage caused by an accident.
- Damage to paintwork or chrome caused by external influences, such as climatic, chemical or industrial pollution.
- Damage resulting from the use of non-original replacement parts.

Routine maintenance and servicing is not covered by the warranty. Incidental or consequential costs such as hotel charges, car hire, loss of personal effects or income are not recoverable under the terms of the warranty.

Calculating your tax liability

<p>To find out how much tax you will pay, simply take the P11D value, then multiply this figure by the BiK percentage. Then simply multiply this figure by 20% or 40% depending on the level of income tax that you pay.</p>	
<p>Please note if your employer provides you with free fuel, this is treated as an additional taxable benefit.</p>	
<p>For more information on company car taxation please visit the HM revenue and customs website www.hmrc.gov.uk</p>	

Service Intervals

When you order your Rapid, you can choose whether your car is on a fixed or a flexible service regime. Your retailer will help you decide which regime suits how your car will be driven, enabling your car to stay in the best possible shape. Fixed regime: Service every 10,000 miles or one year (whichever comes first). This is recommended if the vehicle is likely to be used in the following way:

- Driven fewer than 10,000 miles per annum **and/or**
- Mainly short journeys, drive mostly in towns or cities **and/or**
- High vehicle loading/towing and frequent hill climbs **and/or**
- Heavy accelerating and braking, using high revs

Flexible regime: Sensors in the engine detect when a service is needed. You will be informed of this by a service light which will show at any point between 9,000 and 20,000 miles, up to 24 months (whichever comes first).

The flexible service regime is recommended for vehicles with a daily mileage of more than 25 miles where the vehicle is driven regularly and mainly at a constant speed with minimum vehicle and engine loading, minimal towing and driven in an economical manner.

Motability

People in receipt of the Higher Mobility Component of the Disability Living Allowance receive special help from SKODA. Preferential prices on low cost Contract Hire are available through your local approved Motability retailer. For full details, contact your retailer.

Band	CO2 (g/km)	First 12 Months'	Standard VED ²
A	Up to 100	£0	£0
B	101 - 110	£0	£20
C	111 - 120	£0	£30
D	121 - 130	£0	£100
E	131 - 140	£120	£120
F	141 - 150	£135	£135
G	151 - 165	£170	£170
H	166 - 175	£275	£195
I	176 - 185	£325	£215
J	186 - 200	£460	£250
K	201 - 225	£600	£270
L	226 - 255	£815	£460
M	Over 255	£1,030	£475

OTR (Recommended On The Road)
* Recommended 'On the Road' prices include delivery, 12 months Road Fund Licence, DVLA First registration Fee (at £55), and apply to the United Kingdom only.

VED (Vehicle Excise Duty)
** All vehicles will be subject to Vehicle Excise Duty based on the fuel type of the vehicle and its carbon dioxide (CO2) emissions level, measured in grams per kilometre (g/km). Due to changes in vehicle emissions data, CO2 figures may differ on these vehicles if taken from current SKODA UK stock. The VED bands are shown in the table opposite.

¹First year vehicle licence rates for petrol and diesel cars purchased on or after 1st April 2012. First year rate or 'showroom tax' applies to new car purchases only.

² Rate reverts to the Government's applicable Standard VED rate in subsequent years.

Edition: UK 1st April 2012. VAT is calculated at 20%. VED bands may change on 1st April 2013. Due to printing timescales, the VED figures in this brochure may be out of date after 1st April 2013. Please confirm figures with your SKODA retailer.

Company car tax is based on your cars carbon dioxide emissions. The higher the car's emissions, the higher its tax liability. When a company car is made available for private use a 'Benefit in Kind' value is calculated for tax purposes.

To help you work out your tax liability please refer to page 35.

<p>P11D (Expenses and Benefits)</p>							
<p>The P11D value is calculated by taking the On The Road (OTR) price for the vehicle, less the Road Fund Licence (RFL) and First Registration Fee (FRF).</p>							
<p>BiK (Benefit in Kind) The BiK percentage value is based on the CO2 emissions of the vehicle for the tax year 2013/2014.</p>							
<p>BiK calculation example - Rapid S 1.2 TSI 86PS</p>							
<table> <tbody><tr> <td>P11D value</td> <td>£13,645.00</td></tr> <tr> <td>Company Car BiK tax based on CO2 emission level</td> <td>15%</td></tr> <tr> <td>Taxable BiK (for 2013/2014 tax year): 15% of £13,645.00</td> <td>£2,046.75</td></tr> </tbody></table>	P11D value	£13,645.00	Company Car BiK tax based on CO2 emission level	15%	Taxable BiK (for 2013/2014 tax year): 15% of £13,645.00	£2,046.75	
P11D value	£13,645.00						
Company Car BiK tax based on CO2 emission level	15%						
Taxable BiK (for 2013/2014 tax year): 15% of £13,645.00	£2,046.75						
<p>Annual company car tax (2013/14)</p>							
<table> <tbody><tr> <td>20% Income Tax: 20% of £2,046.75</td> <td>£409.35</td></tr> <tr> <td>40% income Tax: 40% of £2,046.75</td> <td>£818.70</td></tr> </tbody></table>	20% Income Tax: 20% of £2,046.75	£409.35	40% income Tax: 40% of £2,046.75	£818.70			
20% Income Tax: 20% of £2,046.75	£409.35						
40% income Tax: 40% of £2,046.75	£818.70						
<p>Monthly company car tax (2013/14)</p>							
<table> <tbody><tr> <td>20% Income Tax: £409.37 divide by 12 months</td> <td>£34.11</td></tr> <tr> <td>40% income Tax: £818.70 divide by 12 months</td> <td>£68.23</td></tr> </tbody></table>	20% Income Tax: £409.37 divide by 12 months	£34.11	40% income Tax: £818.70 divide by 12 months	£68.23			
20% Income Tax: £409.37 divide by 12 months	£34.11						
40% income Tax: £818.70 divide by 12 months	£68.23						



The information in this brochure referring to specification, design, equipment, material and external appearance relates to the time at which this brochure was printed. Whilst every effort is made to ensure its accuracy, the information in this brochure is not binding and is subject to alteration. Some illustrations in this brochure depict left hand drive models, with both standard and optional equipment shown. Please confirm exact specifications, prices and colour availability with your SKODA retailer who will be notified of any specification changes as they occur.

Edition: UK 03/13

Information: 08457 745 745

Internet: www.skoda.co.uk

E-mail: customerservices@skoda.co.uk

Welcome to your SKODA retailer