

SIMPLY CLEVER

ŠKODA



The ŠKODA Citigo



CAR OF THE YEAR



BEST CITY CAR

Effective: September 2012

The ŠKODA Citigo

Your new communication tool

We would like to introduce you to the New ŠKODA Citigo. As the name suggests, the Citigo is a car that feels right at home in cities and around town.

Citigo re-defines what's possible with a city car - small exterior dimensions yet exceptional interior space offering ample space for four adults. Great manoeuvrability, exceptional comfort and high levels of equipment, Citigo has been designed to deal with almost anything life can throw at it.

The Citigo is the first model to wear the brand's re-designed logo. ŠKODA's winged arrow, executed in chrome and black, the new logo shows a clear precision, clarity and a bold new freshness.

Our small, smart and agile city car that's big on quality, space and value for money!

 facebook.com/Skoda.uk

 [Youtube.com/skodaukchannel](https://youtube.com/skodaukchannel)

For offers visit www.skoda.co.uk/offers





WHAT A NICE VIEW!

The functional and well-designed dashboard of the Citigo offers a lot of what you are used to from ŠKODA.



Citigo S and SE models come with a standard **four-spoke steering wheel**, Elegance models get a sporty **three-spoke leather steering wheel**.



On all Citigo models the central feature is a **large speedometer**. The SE and Elegance dials (shown here) also feature a **rev counter** and a fuel gauge. S models features a digital fuel gauge.



SMART. A unique Portable Infotainment Device (PID*), provides customers with an array of features - an onboard trip computer, navigation system, hands free Bluetooth® system and a multimedia player, all in a single device. PID also has the ability to play your music from the micro SD card.

The Radio in the Citigo contains a FM/AM receiver with RDS (Radio Data System), to display particular information about the radio station (where information is available). In addition there is a CD player for CDs and MP3's with an 3.5mm Aux-in. The 3.5mm Aux-in audio jack on the front panel of the radio is ideal for connecting external MP3 players.

* Optional on S and SE models, standard on Elegance.



AUTHENTIC. The Citigo features lots of small, clever storage solutions.

Simply clever, Three doors, Five doors



ACCESSIBLE. The Citigo is the first ŠKODA to be offered with 3 or 5 doors. In the 3-door model the front seats on SE and Elegance can be pushed forward allowing better access to the rear.



Citigo space...



Spacious. The Citigo's compact design conceals a generous interior space, offering not only the driver and passenger plenty of space and high levels of comfort, but the rear passengers also benefit from a clever design allowing two adults to sit comfortably in the rear.

A striking feature of the front seats are the **integrated head rests**, giving the car a touch of dynamism whilst providing the front passengers with a comfortable seating position and good support.



The boot is among the largest in its class, offering a **spacious 251 litres** - enough to carry shopping, luggage or picnics on days out - or if you would prefer 2,711 ping-pong balls (source AQA).



Isofix restraints are fitted as standard on both rear seats so that child seats can be fitted securely to keep babies or young children safe.

Citigo is not just for driving in and around towns and cities; the seats in both the front and rear are more than **comfortable** enough for any long journey.

Large luggage compartment



Precise. Citigo has an elegant and dynamic design that shows off elements of the new ŠKODA design DNA. Citigo is a car that appeals to the heart as well as the head.



The front of Citigo features a finned grille set in a chrome frame (SE and Elegance models). It's stylish and elegant window lines run along the side of the car without compromising on rear visibility.



The electric panoramic sunroof gives the driver and passengers a fantastic feeling of light and space inside the Citigo



The C-shape in the taillights make the Citigo as unmistakable from the rear as it is from the front

Liverpool



London



Manchester



Best in Class Passive Safety

The design of the side and curtain airbags, demonstrate innovation and progress in ŠKODA's passive safety. Head-thorax side airbags-combine two airbags (side and head) into a single system helping to protect the front-seat passengers in the event of a side impact.

Despite its compactness, the Citigo has as standard - **four airbags**, **ABS** and a **seat-belt reminder** for those in the front and rear to fasten their seat-belts. SE and Elegance models are also equipped with **ESC** as standard



CARING.
The Citigo sets new standards with its high level of safety and technology.



With the vast array of standard passive and active safety systems Citigo has been able to achieve a five star Euro NCAP rating (European New Car Assessment Programme).

Fog lights integrated in the front bumper increase safety when visibility is reduced. Fog lights are standard on Elegance and optional on SE models



Parking the Citigo is easy due to its excellent manoeuvrability. There are three parking sensors integrated into the rear bumper, which check the car's distance from any obstacles. Optional on SE and Elegance models

Best in Class Active Safety



Citigo also features advanced technology - an optional 'city-safe' brake assist sensor that monitors the area in front of the vehicle, actively assisting braking at speeds below 19 mph when there is danger of a collision. Please note that it is the driver's responsibility to be in control of the vehicle at all times.

With ISOFIX and top-tether fixing systems as standard, Citigo has not overlooked the smallest passengers.

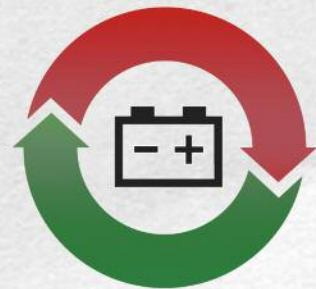




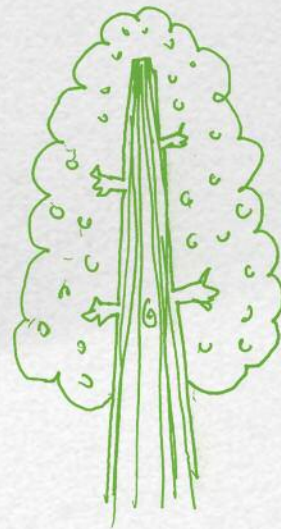
ŠKODA Citigo Engines & GreenTech

GREENTECH

Available on the SE and Elegance trim levels is ŠKODA's latest technological development aimed at reducing emissions and the impact on the environment as well as saving you money. 'GreenTech' consists of a Stop/start system, brake energy recovery, lowered suspension and tyres with reduced rolling resistance. This means the Citigo 1.0 MPI 60PS GreenTech emits just 96g/km of CO₂ with a combined fuel economy of 68.9 mpg.



Recovery is another intelligent technology making use of the energy used for driving. Whenever the driver steps off the accelerator or presses the brake pedal (during coasting and braking phases), the battery is charged. On subsequent acceleration or at constant speed, voltage can then be decreased, reducing the strain on the engine and cutting down on fuel consumption.



CO₂ emissions: 96 g/km



The new 1.0-litre three-cylinder engine is available as a 60PS or 75 PS, with each providing fantastic performance coupled with low fuel consumption and emissions. These small petrol engines are extremely flexible, enabling agile driving around town or economical driving outside of the city.



LESS IS MORE.
New technologies in the ŠKODA Citigo lower CO₂ emissions and give you even more driving pleasure. As the city is already loud enough, Citigo's engine also excels with an extraordinarily low noise.



Manual or Automatic (ASG*)
The automatic transmission is one of the lightest automatic gearboxes ever built - enabling fantastic fuel economy blended with ease of driving. Gears are selected automatically and leaving the driver to just choose "D" - drive, "N" - neutral and "R" reverse. Gear changes are based on various settings - dependent on driving style and vehicle acceleration.



* See glossary for further information



Stop/start lowers the Citigo combined fuel consumption by up to 9% percent. The standard 60PS has a combined fuel consumption of 62.8 mpg whilst the GreenTech achieves an impressive 68.9 mpg. During waiting times at red traffic lights or whilst sitting in traffic, the engine will switch off automatically, restarting as soon as the driver presses the clutch (or steps off the brake).



Semi-automatic transmission



Choose your Citigo...

The all-new ŠKODA Citigo represents fantastic value for money, and offers unrivalled levels of standard specification for the price.

Three trim levels are available to choose from, S, SE and Elegance, choosing the right Citigo for you doesn't need to be complicated.

S



Citigo S key features

- Speed sensitive power steering
- CD Player with Aux input
- 14" Steel wheels with 'Aries' wheel covers
- Height adjustable steering wheel
- 2 Speakers
- Head thorax side airbags
- Black door mirrors and handles
- Daytime running lights
- Pre-installation for PID

Standard



Haydn Black

14" 'Aries'
Steel wheel covers

SE



Citigo SE key features

- Electric front windows
- Body coloured door mirrors and handles
- Remote central locking
- Manual air-conditioning
- Split folding rear seats (60:40 split)
- ESC (Electronic Stability Control)
- Stop/start system (GreenTech models only)

Standard



Club Reverse Black

14" 'Aries'
Steel wheel covers

Elegance



Citigo Elegance key features

- 14" 'Apus' alloy wheels
- PID (Portable Infotainment Device) - inc Bluetooth®, media player, satellite navigation, trip computer
- Electrically adjustable and heated door mirrors
- Heated front seats
- Leather steering wheel
- Front fog lights
- Stop/start system (GreenTech models only)

Standard



Nano Black

Nano Ivory

14" 'Apus' alloys



The ŠKODA Citigo S

3 Door	CO ₂ (g/km)	VED Band	Insurance Group (50)	Recommended Basic	VAT	RRP	Recommended OTR	Business user information BiK 2012/13	P11D Value
1.0 MPI 60PS 5spd Manual	105	B	1E	£5,887.50	£1,177.50	£7,065.00	£7,630.00	12%	£7,575.00
1.0 MPI 60PS 5spd ASG	103	B	1E	£6,358.33	£1,271.67	£7,630.00	£8,195.00	11%	£8,140.00
5 Door	CO ₂ (g/km)	VED Band	Insurance Group (50)	Recommended Basic	VAT	RRP	Recommended OTR	Business user information BiK 2012/13	P11D Value
1.0 MPI 60PS 5spd Manual	105	B	1E	£6,179.17	£1,235.83	£7,415.00	£7,980.00	12%	£7,925.00
1.0 MPI 60PS 5spd ASG	103	B	1E	£6,650.00	£1,330.00	£7,980.00	£8,545.00	11%	£8,490.00

Standard Equipment

Exterior

14" Steel wheels with full size 'Aries' wheel covers (5J x 14" 165/70 R14)
 Body coloured bumpers
 Black door mirrors and handles
 Rear fog light
 Windscreen wiper front & back
 Black radiator grille

Interior

Black frame around air vents, instruments and radio panel
 Black dashboard
 Internally adjustable headlight beam level
 Air vents to front leg space and defroster vents for windshield and side windows
 Height Adjustable steering wheel
 Inside light with delay
 Parcel shelf
 Mid console with one cup holder in front and one rear
 Plastic gearshift knob and handbrake lever
 Rearview mirror
 Seats - two in front, two in back
 Steering wheel (4 spoke plastic)
 Ticket holder
 Two head rests front (integrated into backrest)
 Two head rests rear - height adjustable

Safety

ABS
 High level third rear brake light
 Driver and passenger airbag
 Daytime running lights
 Head-Thorax side airbag for front seats
 Electronic engine immobiliser
 Driver and passenger seat-belt warning
 Preparation for 2 child seats "ISOFIX" on the rears seats + top tether on the outer rear seats
 Rear fog light
 Rear window with defroster
 Three-stage safety seat belts front and back (front with belt retractors)
 Tyre repair kit (no spare wheel)

Function

12V power socket
 Instruments with mileage and digital fuel gauge (no rev counter)
 Interior light in front
 Manually adjustable door mirrors
 Manually operated windows (front only)
 Individually locking doors (no central locking)
 One-tone horn
 Power steering (speed sensitive)
 Heating and ventilation system with four speed fan

Radio/navigation/telephone

PID (Portable Infotainment Device) - Preparation only
 Radio with CD, MP3, AUX-IN (2 speakers)



The ŠKODA Citigo S Factory Fitted Options

Citigo is available with a number of packs that offer a range of very useful equipment at fantastic prices to personalise your Citigo.

Comfort pack

Comfort package (inc. Height Adj Driver seat, Elec. Windows, Remote Central locking)
 Backrest release for front seats with 'Easy Entry'

Basic RRP

£291.67 £350.00

Style Pack 1

Alloy wheels 'Apus' 5J x 14" with a temporary spare steel wheel

£316.67 £380.00

Safety Pack

City-Safe with ESC and Passenger airbag Switch-off

£250.00 £300.00

Individual Options

Temporary spare steel wheel	£41.67	£50.00
PID (Portable Infotainment Device)	£229.17	£275.00
Metallic Paint / Pearlescent / Sunflower Yellow	£383.33	£460.00
Manual air conditioning	£500.00	£600.00
Passenger airbag deactivation switch	£66.66	£80.00
Extended warranty 4 years / 80,000 miles	£125.00	£150.00
Extended warranty 5 years / 100,000 miles	£216.67	£260.00

Comfort pack



Comfort package includes height adjustable driver seat, front electric windows, remote central locking and a backrest release for front seats with Easy Entry.

Note: Ivory interior not available on S

Style Pack 1



14" 'Apus' alloys 5J x 14" + temporary spare steel wheel

Safety Pack



City-Safe with ESC and Passenger airbag Switch-off function



PID

Portable Infotainment Device includes Bluetooth®, media player, satellite navigation and a trip computer

The ŠKODA Citigo SE

3 Door	CO ₂ (g/km)	VED Band	Insurance Group (50)	Recommended Basic	VAT	RRP	Recommended OTR	Business user information	
								BiK 2012/13	P11D Value
1.0 MPI 60PS 5spd Manual	105	B	1E	£6,770.83	£1,354.17	£8,125.00	£8,690.00	12%	£8,635.00
1.0 MPI 60PS 5spd Manual GreenTech	96	A	1E	£7,070.83	£1,414.17	£8,485.00	£9,050.00	10%	£8,995.00
1.0 MPI 60PS 5spd ASG	103	B	1E	£7,241.67	£1,448.33	£8,690.00	£9,255.00	11%	£9,200.00
5 Door									
1.0 MPI 60PS 5spd Manual	105	B	1E	£7,062.50	£1,412.50	£8,475.00	£9,040.00	12%	£8,985.00
1.0 MPI 60PS 5spd Manual GreenTech	96	A	1E	£7,362.50	£1,472.50	£8,835.00	£9,400.00	10%	£9,345.00
1.0 MPI 60PS 5spd ASG	103	B	1E	£7,533.33	£1,506.67	£9,040.00	£9,605.00	11%	£9,550.00

Standard Equipment (over Citigo S)

Exterior

Body coloured door mirrors and handles
Lowered suspension (for aerodynamics)
GreenTech models only
Front grille with chrome frame

Interior

Onyx black dashboard with black inserts
Driver's sun visor with ticket holder, passenger's sun visor with mirror
Glove box - cover with bag holder (hook built onto glovebox catch)
Small pockets on the side of front seats

Safety

ESC (Electronic Stability Control)

Function

Height adjustable driver seat
Easy-entry system (3dr only)
Electric front windows
Instruments with Speedometer, rev counter and analogue fuel gauge
Manual air-conditioning
Rear backrest split, 60:40 folding
Remote central door locking (with SAFE system)
Two-tone horn



Model show with City-Safe option.



The ŠKODA Citigo SE Factory Fitted Options

Citigo is available with a number of packs that offer a range of very useful equipment at fantastic prices to personalise your Citigo.

Convenience pack	Basic	RRP
Cruise control (inc Trip Computer) Acoustic rear parking sensors	£258.33	£310.00
Style Pack 1		
Alloy wheels 14" 'Apus' Temporary spare wheel	£316.67	£380.00
Style Pack 2		
Temporary spare wheel Alloy wheels 15" 'Auriga'	£458.33	£550.00
Safety pack		
City-Safe Passenger airbag Switch-off	£150.00	£180.00
Entertainment pack		
Additional 4 speakers (2 in the rear, 2 in the A Pillar) Multi-media holder	£83.33	£100.00
Winter Pack		
Heated front seats Electrically adjustable and heated door mirrors Front fog lights	£250.00	£300.00
Summer pack		
Panoramic sunroof Sunset glass	£541.67	£650.00
Leather Pack		
Small leather package (3 spoke steering wheel)	£150.00	£180.00
Individual Options		
Smoking package, ashtray front	£33.33	£40.00
Temporary steel spare wheel	£41.67	£50.00
PID (Portable Infotainment Device)	£229.17	£275.00
Metallic Paint / Pearlescent / Sunflower Yellow	£383.33	£460.00
Sunset glass	£133.33	£160.00
Lowered suspension	£87.50	£105.00
Extended warranty 4 years / 80,000 miles	£125.00	£150.00
Extended warranty 5 years / 100,000 miles	£216.67	£260.00

Style Pack 1



14" 'Apus' alloys 5J x 14" + temporary spare steel wheel

Style Pack 2



15" 'Auriga' alloys 5.5J x 15" + temporary spare steel wheel

Leather Pack



3 spoke leather steering wheel, with leather handbrake and gear-knob gaiter

PID



Portable Infotainment Device Includes Bluetooth®, media player, satellite navigation and a trip computer

The ŠKODA Citigo Elegance

3 Door	CO ₂ (g/km)	VED Band	Insurance Group (50)	Recommended Basic	VAT	RRP	Recommended OTR	Business user information	
								BiK 2012/13	P11D Value
1.0 MPI 60PS 5spd Manual GreenTech	96	A	1E	£7,554.17	£1,510.83	£9,065.00	£9,630.00	10%	£9,575.00
1.0 MPI 75PS 5spd Manual GreenTech	98	A	2E	£7,879.17	£1,575.83	£9,455.00	£10,020.00	10%	£9,965.00
1.0 MPI 75PS 5spd ASG	105	B	2E	£8,050.00	£1,610.00	£9,660.00	£10,225.00	12%	£10,170.00
5 Door									
1.0 MPI 60PS 5spd Manual GreenTech	96	A	1E	£7,845.83	£1,569.17	£9,415.00	£9,980.00	10%	£9,925.00
1.0 MPI 75PS 5spd Manual GreenTech	98	A	2E	£8,170.83	£1,634.17	£9,805.00	£10,370.00	10%	£10,315.00
1.0 MPI 75PS 5spd ASG	105	B	2E	£8,341.67	£1,668.33	£10,010.00	£10,575.00	12%	£10,520.00

Standard Equipment (over SE)

Exterior

14" 'Apus' alloys
(5 x 14" 175/65 R14)
Front fog lights

Function

Electrically adjustable and heated door mirrors
Heated front seats

Interior

Chrome frame around air vents, instruments, radio and airconditioning unit
Interior door handles in chrome
leather handbrake and gearknob gaiter
Leather steering wheel (3 spoke)

Radio/navigation/telephone

PID (Portable Infotainment Device) - inc Bluetooth®, media player, satellite navigation, trip computer



The additional equipment on the Elegance represents £1,085 value for a premium of just £580 over the SE. Outstanding value!

The ŠKODA Citigo Elegance Factory Fitted Options

Citigo is available with a number of packs that offer a range of very useful equipment at fantastic prices to personalise your Citigo.

Convenience pack

Cruise control (inc Trip Computer)
Acoustic rear parking sensors

Basic RRP
£258.33 £310.00

Safety pack

City-Safe
Passenger airbag Switch-off

£150.00 £180.00

Entertainment pack

Additional 4 speakers (2 in the rear, 2 in the A Pillar)
Multi-media holder

£83.33 £100.00

Summer pack

Panoramic sunroof
Sunset glass

£541.67 £650.00

Individual Options

Smoking package, ashtray front £33.33 £40.00
Temporary spare steel wheel £41.67 £50.00
Metallic Paint / Pearlescent / Sunflower Yellow £383.33 £460.00
Sunset glass £133.33 £160.00
Extended warranty 4 years / 80,000 miles £125.00 £150.00
Extended warranty 5 years / 100,000 miles £216.67 £260.00

Safety Pack



City-Safe
Passenger airbag Switch-off function

Convenience Pack



Cruise control (inc Trip Computer)
Acoustic rear parking sensors

Summer Pack



Sunset glass with Panoramic and tilt/slide sunroof

THE ŠKODA CITIGO COLOURS



1. Candy White B4B4



2. Tornado Red G2G2



3. Deep Black Pearlescent 2T2T



4. Spring Green metallic 0W0W



5. Brilliant Silver metallic 8E8E



6. Night Blue metallic Z2Z2



7. Silver Leaf metallic 7B7B



8. Sunflower Yellow T1T1

	1	2	3	4	5	6	7	8
	Candy White	Tornado Red	Deep Black Pearlescent	Spring Green metallic	Brilliant Silver metallic	Night Blue metallic	Silver Leaf metallic	Sunflower Yellow
Citigo	•	•	•	•	•	•	•	•

Citigo is available with an accessory pack of decorative foils and alloy wheels. These are available through the ŠKODA retail network.



● ACCESSORIES

If the standard specification and factory fitted options are not enough for you, then why not take a look at our range of retailer fitted accessories? Please speak to your local retailer for more information.

Sporty styling - £180

If you want to give your Citigo a sporty look then try this range of decorative foils available from your local retailer



Auriga White Alloys - £161 each

(also available in black)
Hit the city streets and get yourself noticed with these classy white alloys



The PID (Portable Infotainment Device) - £275 with no fitting required

Includes Bluetooth®, media player, satellite navigation and trip computer on a handy, portable device. Even if you don't buy your car with one you can come back and purchase one anytime - as all Citigo's feature PID preparation as standard

Stainless steel insert decorative door sill covers - £79

These help protect your Citigo when you and your passengers are getting in or out.



Floor mats - from £30 fitted

Choose from standard, luxury textile and rubber to protect the interior floor.

Product requires fitting at additional cost.

Roof Bars - £215

Bicycle holder with aluminium profile - £90



The ŠKODA Citigo Engine Specifications

Petrol Engines	1.0 MPI 60PS	1.0 MPI 60PS GreenTech	1.0 MPI 60PS ASG	1.0 MPI 75PS GreenTech	1.0 MPI 75PS ASG
Trim level	S, SE	SE, Elegance	S, SE	Elegance	Elegance
Type	3-Cylinder in line engine, liquid cooling system, DOHC, transverse in front				
Fuel injection system	Electronic multipoint fuel injection (MPI)				
Cubic capacity cc	999	999	999	999	999
Bore x stroke mm	74.5 x 76.4	74.5 x 76.4	74.5 x 76.4	74.5 x 76.4	74.5 x 76.4
Air pollution regulation	EU 5	EU 5	EU 5	EU 5	EU 5
Compression ratio	10.5:1	10.5:1	10.5:1	10.5:1	10.5:1
Performance					
Max speed mph (km/h)	99 (160)□	100 (161)□	99 (160)□	107 (172)□	106 (171)□
Acceleration 0-62mph	14.4	14.4	15.3	13.2	13.9
Max. performance (PS/rpm)	60 / 5,000-6,000	60 / 5,000-6,000	60 / 5,000-6,000	75 / 6,200	75 / 6,200
Max. torque (Nm/rpm)	95 / 3,000-4,300	95 / 3,000-4,300	95 / 3,000-4,300	95 / 3,000-4,300	95 / 3,000-4,300
Fuel consumption mpg (l/100km)					
Urban*	50.4 (5.6)	56.5 (5.0)	53.3 (5.3)	55.4 (5.1)	51.4 (5.5)
Extra Urban*	72.4 (3.9)	78.5 (3.6)	72.4 (3.9)	76.3 (3.7)	70.6 (4.0)
Combined*	62.8 (4.5)	68.9 (4.1)	62.8 (4.5)	67.3 (4.2)	62.8 (4.5)
CO ₂ emissions g/km*	105	95	103	98	105

□ Where law permits.

Power transmission

Clutch The clutch assembly comprises of a hydraulic single dry clutch disc with membrane spring, asbestos free.

Manual transmission Five-speed manual transmission, fully synchronised

Automatic transmission Five-speed Automated Sequential

Chassis

Front axle/rear axle McPherson suspension with lower triangular links and torsion stabiliser

Suspension Coil springs, telescopic shock absorbers, rear springs located outside the shock absorber

Braking system Hydraulic dual-diagonal circuit braking system vacuum assisted.

Front brakes Ventilated disc brakes in sliding calliper design with piston.

Rear brakes Drum brakes

Handbrake Mechanical handbrake operating on rear wheels.

Steering direct rack and pinion steering with electrohydraulic power steering

Transmission Front wheel drive

Turning circle (m) 9.8

Drag coefficient cw 0.33

Tank

Fuel tank content 35 litres

Fuel Unleaded petrol RON 95 or unleaded petrol RON 91

Body type three & five door available, four-seater

Official fuel consumption for the Citigo range in mpg (litres/100km):

urban 50.4 (5.6) - 56.5 (5.0);
extra urban 70.6 (4.0) - 78.5 (3.6);
combined 62.8 (4.5) - 68.9 (4.1).

CO₂ Range 105 - 95 g/km

†Using low-octane fuel may affect engine performance.

We measure the maximum power output figures of our engines in PS or Pferdestärke (horse strength in German), which is the metric equivalent of bhp.

To convert from metric to imperial horsepower, divide the PS figure by 1.0139.

*Official fuel consumption according to EU Directive 99/94.

The consumption calculation according to 1999/100/EC is based on the actual unladen weight of the vehicle. Additional specifications can lead to a higher weight class and hence to consumption figures of this higher weight class. The driving style, road and traffic conditions, environmental influences and vehicle condition can in practice lead to consumption figures which may differ from those calculated in this standard.

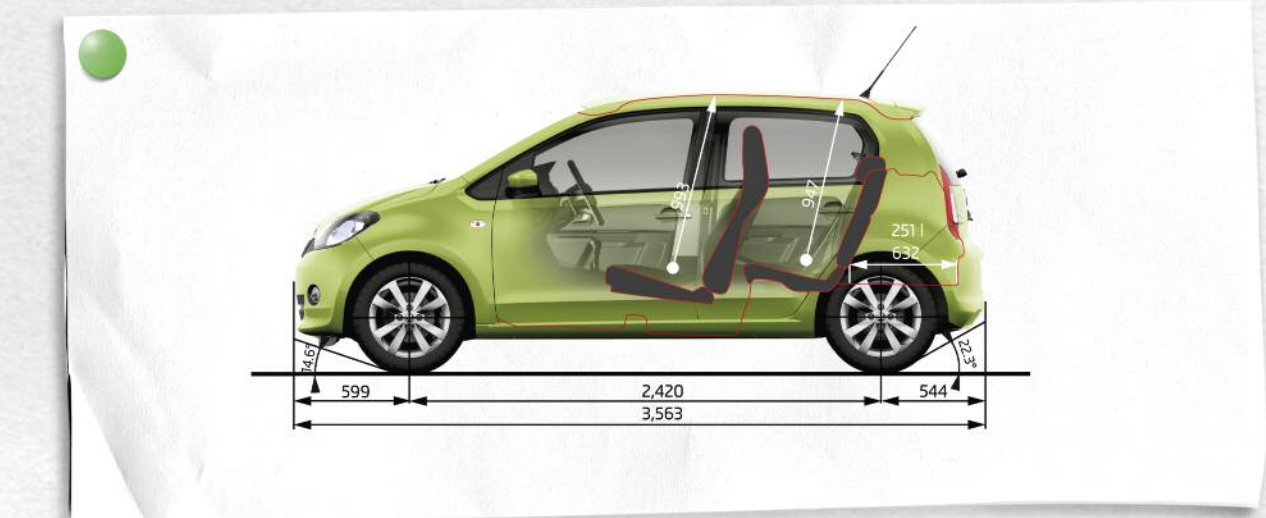
Measurements and Weights

The ŠKODA Citigo Hatchback

Exterior dimensions (mm)	3 Door	5 Door
Length (mm)	3,563	3,563
Width (mm)	1,641	1,645
Height (at kerb weight) (mm)	1,478 (1,463)*	1,478 (1,463)*
Wheel base (mm)	2,420	2,420
Clearance (at kerb weight) (mm)	136 (121)*	136 (121)*
Track front (mm)	1,428	1,428
Track rear (mm)	1,424	1,424

Interior dimensions (mm)	3 Door	5 Door
Width of front seats (mm)	1,417	1,369
Width of rear seats (mm)	1,389	1,388
Headroom in front seats (mm)	993	993
Headroom in rear seats (mm)	947	947
Height of the loading sill (at kerb weight) (mm)	769	769
Storage capacity (Litres)	251	251
Storage capacity - with rear seat folded down (Litres)	951	959

* GreenTech



Weight	1.0 MPI 60PS	1.0 MPI 60PS GreenTech	1.0 MPI 60PS ASG	1.0 MPI 75PS GreenTech	1.0 MPI 75PS ASG
Kerb weight* kg	854	865	857	865	857
Total weight kg	1,290	1,290	1,290	1,290	1,290
Payload** kg	436	425	433	425	433

* Kerb weight is the mass of the vehicle with bodywork in running order (kg)

** Payload includes driver at 75kg & equipment

All measurements and weights are correct at time of going to print but may be subject to change and may vary according to passengers and load in vehicle.

ŠKODA Finance. Your journey, your choice.

ŠKODA Finance like to do things a little differently, that's why for many years we've specialised in providing simple and convenient funding options for ŠKODA drivers. It's what we know.

ŠKODA Solutions is all about you; a flexible, competitive fixed-rate plan designed around you and your budget, putting you firmly in the Citigo driving seat.

Solutions is different because you defer a proportion of the car's value until the end of the agreement, giving you significantly lower monthly repayments than if you'd taken out a loan... ever heard of a bank being so imaginative?

Solutions is totally flexible. You get to choose the size of your deposit (from as little as one monthly payment), and a repayment period which suits you and at the end of the term you have 3 options to choose from.



1 Part-exchange the car for a new ŠKODA on a new Solutions contract.



2 Pay the optional final payment so that you own the car.*



3 Or return the car to us (subject to terms and conditions).

ŠKODA Finance also offers:

• Hire purchase • Contract hire • Service plans • Insurance

Speak to your ŠKODA retailer for your personalised quotation today.

*Subject to payment of the option to purchase fee. An offer of finance depends on certain conditions. Subject to status, indemnities may be required. Available to over 18's in the UK only. ŠKODA Finance.



ŠKODA Insurance. Have a safe trip.

We want you to start enjoying your new car from day one and thanks to ŠKODA Insurance complimentary seven day cover you can. Call free on 0800 316 7895, provide us with a few details, and we'll send a cover note to your retailer. They will then tax your car and you can drive it away. Telephone lines are open Monday to Friday 8am - 9pm and Saturday 9am - 5pm.

For details of our full range of insurance products visit www.insurewithskoda.co.uk You can get an annual car insurance quote for your ŠKODA and buy it online too.



DEPOSIT

As little as one repayment



BALANCE

A flexible repayment period (18-42 months)



OPTIONAL FINAL PAYMENT

3 choices at the end of the agreement

ŠKODA Finance is a trading name of Volkswagen Financial Services (UK) Limited, Brunswick Court, Yeomans Drive, Blakelands, Milton Keynes MK14 5LR. Registered in England number 2835230.

ŠKODA Insurance is a trading name of Volkswagen Insurance Service (Great Britain) Limited, an appointed representative of Volkswagen Financial Services (UK) Limited, registered in England number: 2835230 (registered office: Brunswick Court, Yeomans Drive, Blakelands, Milton Keynes MK14 5LR). ŠKODA Insurance motor insurance is sold, underwritten and administered by Allianz Insurance plc, registered in England number: 84638 (registered office: 57 Ladymead, Guildford, Surrey GU1 1DB). Both organisations are authorised and regulated by the Financial Services Authority (FSA), whose registration numbers are 311988 and 121849 respectively. Authorisation details can be checked on the FSA's register at fsa.gov.uk or call 0845 606 1234. Volkswagen Financial Services (UK) Limited and Allianz Insurance plc are not part of the same corporate group.



ŠKODA Customer Promise
Where actions speak louder than words



Care and consideration for you and your car

- We will...**
- > Work competently and in your best interests
 - > Treat you as a valued individual and respect and care for your property



A flexible and convenient service

- We will...**
- > Provide flexibility and choice of dates and times for booking and collection
 - > Ensure our price will be all-inclusive for the work we agree to undertake
 - > Endeavour to diagnose a vehicle defect within 24 hours of the vehicle being presented to us
 - > Offer free collection and delivery within a 10 mile radius (up to 20 minutes drive time) for pre-bookings
 - > Provide a courtesy car or arrange onward mobility if your vehicle is to be kept overnight



Expertise and attention to detail

- We will...**
- > Complete the work as agreed with you
 - > Always gain your authority if any additional work is required
 - > Keep you informed of progress and advise you when your car is ready
 - > Complete a complimentary visual health check if your vehicle is left with us and include a professional recommendation of:
 - Any components that require replacing immediately
 - The point at which any part of your car should be re-checked in the near future
 - > Check for any warrantable product enhancements recommended by ŠKODA and perform these free of charge
 - > Always use genuine ŠKODA parts and accessories
 - > Wash your car following a Service



A clear explanation of our work

- We will...**
- > Ensure our invoice matches the booking price
 - > Provide a full explanation of work completed and any additional charges made
 - > Communicate clearly in an open and honest way avoiding jargon
 - > Review the vehicle condition report and explain all work completed
 - > Where possible, perform a walkaround of the vehicle with you
 - > Value your feedback and will encourage you to complete our Your Opinion Counts survey so you can tell us what you liked and how we can improve further

Technical glossary

ABS: the anti-lock braking system prevents the wheels from locking during heavy or emergency braking, enabling the vehicle to remain steerable. When braking, wheel speed sensors measure the road wheel speed and should one or more wheels start to lock the system reduces brake pressure to that wheel.

Elements of the ABS System :-

- **EBC:** Electronic brake control. The engine brake torque control regulates the power supply by intervening with the engine management system.

ASG: The ASG differs from normal automatic gearboxes by using electromechanical components to change gear instead of a hydraulically operated mechanism. This has reduced weight and increased the precision of control and reliability.

The gearbox is controlled with the gear selector. It features the standard D (drive), N (neutral) and R (reverse) positions as well as having the ability to use a sequential selection of gears (+/-).

The ASG does not feature the normal P (parking) position. The engine must be started in position N, with the brake pedal depressed.

The ASG transmission differs from other automatic gearboxes in that it eliminates the creeping movement common with an automatic transmission after selecting forward drive mode D (Drive). The car moves off after the accelerator has been pressed and the engine speed has increased.

CAN Bus: the CAN Bus is an electronic data bus which links the various different electronic control systems in the car. It ensures ideal co-ordination between systems and reduces the amount of wiring needed in the car.

Fuel cut-out: should one or more of the airbags inflate after an accident, this system automatically cuts out the fuel supply, thus preventing subsequent leakage of the diesel or petrol.

Trip Computer: the trip computer not only features an impressive range of data displays, operating it is simplicity itself. A multifunction touch key enables you to call up all relevant data on the easy-to-read display. Features include external temperature, time, current fuel consumption, average fuel consumption, miles driven and average speed.

ESC: electronic stability control is designed to stabilise the dynamic handling response of the vehicle by counteracting any tendency towards oversteer or understeer. The ESC constantly compares the actual movement of the vehicle with predetermined values and according to the situation ESC reacts by braking each wheel individually (according to direction of slip) and automatically adjusting the engine's output.

Elements of ESC system:-

- **ASR:** anti-slip regulation traction control ensures the Citigo's stability when pulling away or accelerating. If the engine power or torque being transmitted to the drive wheels is too great, for example on a slippery road surface, engine torque is automatically reduced until optimum road holding returns, thus preventing wheelspin. A light indicates whether the ASR system is on. It can be manually switched off.

- **EDL:** the electronic differential lock continually compares the rpm of the drive wheels, and if it identifies a difference between them which could lead to an individual wheel spinning, for example if the two wheels are on different types of surface or accelerating on wet wheels, the system brakes the wheel affected until uniform rpm of all drive wheels is restored.

- **HBA:** Hydraulic brake assistant increases the optimal build-up of brake power. It ensures complete use of the brake system potential, thus shortening the braking distance.

- **HHC:** Hill hold control allows for a safe hill start by holding the brake for a small amount of time, reducing the risk of unintentional reversing or roll back.



Customer services

Talk to us on 08457 745 745

No matter what the query, our dedicated call centre is always ready to listen. No matter how big or small the request, speak to one of our customer care advisors to see if they can help. The call centre is open from 8.30am-5.30pm. If you're calling out of hours, then a message can be left and you'll be contacted back.

Peace of mind with a ŠKODA warranty

In the first two years of owning your car, you'll get the peace of mind of a two year unlimited mileage warranty. In addition, you'll also get a further warranty on new vehicles supplied through the appointed dealer network until the vehicle has completed 60,000 miles or the end of the third year, whichever is sooner.

Your Citigo also benefits from a 3 year paint warranty and 12 year body protection warranty.

A network that's here to help

With 17 years in the top 10 of JD Power's customer satisfaction survey, our network of approximately 125 sales retailers know how to treat a customer. You can be sure that as a ŠKODA customer, your retailer will look after you from the moment you walk through the door, throughout the life of your ŠKODA. Your Citigo will be serviced and maintained to the highest standards by specially trained ŠKODA technicians. And when you need a spare part you'll be happy to know that most are held in stock, or can be ordered within 24 hours. So if top class customer satisfaction is what you're after, the ŠKODA network will be there for you.

Motability

People in receipt of the Higher Mobility Component of the Disability Living Allowance receive special help from ŠKODA. Preferential prices on low cost Contract Hire are available through your local approved Motability retailer.

If your ŠKODA's in trouble, rely on ŠKODA Assistance

Completely free of charge, every new ŠKODA is covered by ŠKODA Assistance, provided by the RAC through a dedicated team. This cover lasts for 3 years, with no mileage limit. So if you ever break down, you can use the freephone number to call out someone who really knows about ŠKODA cars to help. This service is even available in Europe, so you don't need additional breakdown cover when you're driving on the continent.

Congestion charges

Cars that emit 100g/km or less of CO₂ such as the Citigo GreenTech model, qualifies for a 100% discount for congestion charging. Vehicles need to be registered to qualify, for more information visit www.tfl.gov.uk. There is currently a £10 registration payment required for the application to be completed.

Service Interval for your Citigo.

When you order your Citigo, your car is programmed to a fixed service regime.

Fixed service regime means the car requires servicing every 10,000 miles or one year (whichever comes first).

Extended warranty

Exclusions and limitations

Wear and tear components will only be considered under the terms of the warranty for the first of six months or 6,500 miles, whichever is soonest. These include, but are not limited to brake linings and disc pads, clutch release bearings, clutch pressure plates and centre plates, tyres, wiper blades, seat and backrest covers, floor coverings, spark plugs, batteries for key fobs and alarms, light bulbs and shock absorbers.

Mechanical adjustments including but not limited to adjustments to doors, flaps, boot lids, bonnets and sunroof, brake adjustment, clutch adjustment, v belt adjustment, ignition adjustment, headlight adjustment, steering geometry adjustments and wheel balancing are excluded.

Damage (including but not limited to the following) is excluded:

- ▶ Damage caused by your failure to take all reasonable steps to prevent mechanical damage from occurring.
- ▶ Damage or defects caused by not having the vehicle serviced in accordance with the manufacturer's guidelines.
- ▶ Damage or defects caused by improper use of the vehicle, neglect or use of the vehicle for motor sports activities.
- ▶ Damage caused by an accident.
- ▶ Damage to paintwork or chrome caused by external influences, such as climatic, chemical or industrial pollution.
- ▶ Damage resulting from the use of non-original replacement parts.

Routine maintenance and servicing is not covered by the warranty. Incidental or consequential costs such as hotel charges, car hire, loss of personal effects or income are not recoverable under the terms of the warranty.

Calculating your tax liability

To find out how much tax you will pay, simply take the P11D value, then multiply this figure by the BIK percentage. Then simply multiply this figure by 20% or 40% depending on the level of income tax that you pay.

Please note if your employer provides you with free fuel, this is treated as an additional taxable benefit.

For more information on company car taxation please visit the HM revenue and customs website www.hmrc.gov.uk

BIK calculation example - Citigo S 3dr 1.0 60PS 5spd Manual

P11D value	£7,575.00
Company Car BIK tax based on CO ₂ emission level	12%
Taxable BIK (for 2012/2013 tax year): 12% of £7,575.00	£909.00

Annual company car tax (2012/13)

20% Income Tax: 20% of £909.00	£181.80
40% income Tax: 40% of £909.00	£363.60

Monthly company car tax (2012/13)

20% Income Tax: £181.80 divide by 12 months	£15.15
40% income Tax: £363.60 divide by 12 months	£30.30

For offers visit www.skoda.co.uk/offers

Band	CO ₂ (g/km)	First 12 Months ¹	Standard VED ²
A	Up to 100	£0	£0
B	101 - 110	£0	£20
C	111 - 120	£0	£30
D	121 - 130	£0	£100
E	131 - 140	£120	£120
F	141 - 150	£135	£135
G	151 - 165	£170	£170
H	166 - 175	£275	£195
I	176 - 185	£325	£215
J	186 - 200	£460	£250
K	201 - 225	£600	£270
L	226 - 255	£815	£460
M	Over 255	£1,030	£475

OTR (Recommended On The Road)

Recommended 'On the Road' prices include delivery, 12 months Road Fund Licence, DVLA First registration Fee (at £55), and apply to the United Kingdom only.

VED (Vehicle Excise Duty)

All vehicles will be subject to Vehicle Excise Duty based on the fuel type of the vehicle and its carbon dioxide (CO₂) emissions level, measured in grams per kilometre (g/km). Due to changes in vehicle emissions data, CO₂ figures may differ on these vehicles if taken from current ŠKODA UK stock. The VED bands are shown in the table opposite.

¹First year vehicle licence rates for petrol and diesel cars purchased on or after 1st April 2012. First year rate or 'showroom tax' applies to new car purchases only.

²Rate reverts to the Government's applicable Standard VED rate in subsequent years.

Please confirm figures with your ŠKODA retailer. Edition: UK 1st April 2012. VAT is calculated at 20%. For fuel consumption data, please refer to page 28.

Company car tax is based on your car's carbon dioxide emissions. The higher the car's emissions, the higher its tax liability. When a company car is made available for private use a 'Benefit in Kind' value is calculated for tax purposes.

To help you work out your tax liability please refer to page 34.

P11D (Expenses and Benefits)

The P11D value is calculated by taking the On The Road (OTR) price for the vehicle, less the Road Fund Licence (RFL) and First Registration Fee (FRF).

BIK (Benefit in Kind)
The BIK percentage value is based on the CO₂ emissions of the vehicle for the current tax year 2012/2013.



The information in this brochure referring to specification, design, equipment, material and external appearance relates to the time at which this brochure was printed. Whilst every effort is made to ensure its accuracy, the information in this brochure is not binding and is subject to alteration. Some illustrations in this brochure depict left hand drive models, with both standard and optional equipment shown. Please confirm exact specifications, prices and colour availability with your SKODA retailer who will be notified of any specification changes as they occur.

Edition: UK 08/12 (2nd edition)

Information: 08457 745 745

Internet: www.skoda.co.uk

E-mail: customerservices@skoda.co.uk

Welcome to your SKODA retailer