



Innovation  
that excites

# NISSAN NAVARA



[Contents](#) | [Exterior design](#) | [Interior design](#) | [Technology & Performance](#) | [Style & Accessories](#) | [Technical Specifications](#) | [Price List](#) | [Commitments](#)

[Print](#) | [Close](#)

[REQUEST A TEST DRIVE](#)





## WILD AT HEART NISSAN NAVARA

### LOOK & FEEL

EXTERIOR DESIGN	4
INTERIOR DESIGN	10

### TECHNOLOGY & PERFORMANCE

NISSANCONNECT PREMIUM	14
INTERIOR SPACE	16
DETAILS	18
SAFETY & SECURITY	20

### STYLE & ACCESSORIES

ACCESSORIES	22
COLOURS/TRIMS	24
ALL ABOUT NISSAN	26

OPEN ROAD. OPEN SPACE.

OPEN MIND: LIVE TO THE MAX IN THE NISSAN NAVARA - A FULLY FLEXIBLE FIVE-SEATER WITH ALL MOD CONS.

STRONGER, TOUGHER AND MORE POWERFUL THAN EVER, IT'S BUILT FOR BIG ADVENTURE.

more on [www.nissan.co.uk/navara](http://www.nissan.co.uk/navara)



# THIS IS THE LIFE

## MORE NOSE, MORE NOUSE:

The tough NAVARA design is a guaranteed pick-up. Easy to live with, great to work with and even more rewarding to play with.

550  
NEWTON METRE

231  
PS

Equipped with an ultra-powerful V6 3L-Diesel engine delivering 231PS and 550NM of torque\*, NAVARA's strength and drive is unique in its category. Flexible, responsive and remarkably agile thanks to a highly effective suspension system - nothing's too heavy for its tough, high tensile steel ladder chassis with welded cross-members.

# V6 DIESEL

3L ENGINE

7 AT

5-SEAT  
DOUBLE CAB

\* available on OUTLAW grade

4  
LOOK & FEEL

5  
EXTERIOR DESIGN

REQUEST A TEST DRIVE





## ON THE ROAD

**A BIT OF ROUGH AND TUMBLE** won't hurt NAVARA: with an impressive load capacity of over 1,100kg – the bigger and bulkier, the better.

5-SEAT  
DOUBLE CAB

1,100  
KG-PAYLOAD

3,000 KG  
MAX TOWING\*

\*2,700 kg on King Cab / 2,600 kg on Double Cab / 3,000 kg on Double Cab OUTLAW

6  
LOOK & FEEL

7  
EXTERIOR DESIGN

[Contents](#) | [Exterior design](#) | [Interior design](#) | [Technology & Performance](#) | [Style & Accessories](#) | [Technical Specifications](#) | [Price List](#) | [Commitments](#) | [Print](#) | [Close](#)

[Page 1](#) | [Page 2](#) | [Page 3](#)

[REQUEST A TEST DRIVE](#)





# TAKE ME HIGHER

**THE BEST THING** about having a work-horse like NAVARA is when you take time off. So head for the hills and enjoy the ride.



## 5AT GEAR

Sit back and relax with a 5-speed automatic gearbox or get more involved with the option to change gear up or down in sequence for faster progress or just for fun.

## 2,600 KG TOW STRENGTH

NAVARA has more than enough stamina for your adventures - so pile on the weight and keep going.

## 2.5 dCi 190 PS 450 NM

A sports-driven front design, a fully-equipped living cabin and an outstanding capacity for action and adventure, all built on a mass of muscle. Hardworking and handsome, NAVARA is style with purpose: its high stance and wide flared wheel arches give you greater ground clearance and axle articulation for rough terrain.

Technical data above refers to TEKNA grade Double Cab

8  
LOOK & FEEL

9  
EXTERIOR DESIGN

[REQUEST A TEST DRIVE](#)



**5-SEAT**  
DOUBLE CAB

**DUAL ZONE**  
AUTO A/C

**NEAT**  
STORAGE

**FULL 5-SEATER:**  
THIS IS MY HOME

**COME ON IN:** the NAVARA Double Cab is a full five-seater with a spacious cabin, refreshed by a dual zone auto A/C.

10  
INTERIOR DESIGN

11  
LOOK & FEEL

**REQUEST A TEST DRIVE**







**DUAL ZONE**  
AUTO A/C

**BLUETOOTH®**  
HANDS-FREE

**CRUISE**  
CONTROL

Keep up the pace with cruise control and speed limiter at the tip of your fingers. Play DVDs and CDs, browse with Bluetooth® streaming or enjoy live-performance sound quality from your iPod, MP3 player or USB stick.

Specification varies by grade, please see UK spec guide for full details.

**5-STAR**  
COMFORT

**YOU'D THINK YOU WERE IN AN EXECUTIVE SALOON** with that extra-wide layout, full leather finishes and Premium Sat Nav system set neatly into the dash.

12  
INTERIOR DESIGN

13  
LOOK & FEEL

**REQUEST A TEST DRIVE**





Visualise your journey on your 7" touch-screen with ultra-clear display of info-alerts, music selections, your phone book and diary and even the view behind. Watch out behind thanks to the rear view camera. Having eyes in the back of your head makes light work of reverse parking and back-seat surveillance.

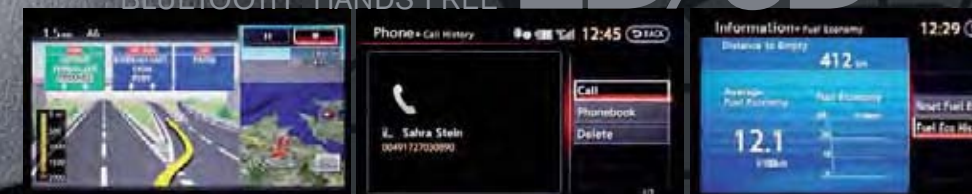
## NISSANCONNECT PREMIUM

YOUR FULLY INTEGRATED NAVIGATION, COMMUNICATION AND VIDEO/AUDIO ENTERTAINMENT SYSTEM KEEPS YOU IN RHYTHM WHEREVER YOU ARE.

SPLIT SCREEN

# 2D/3D

BLUETOOTH® HANDS-FREE



**MAP** your route on a high-definition 2D or 3D split screen and auto-zoom on key targets with voice guidance in 8 European languages.

**OPEN** up with Bluetooth® hands-free connectivity complete with caller ID and voice recognition. Just sync your phone once and you are ready to talk.

**TRACK** your progress thanks to continuous updates on your touch screen. Precise and always pertinent, it gives you a sharper edge.

# 40GB

HARD DISC DRIVE





## 2ND ROW SEATS

### SHARE MY SPACE

**THE SECOND ROW SEATS** split 60:40 and have a clever folding mechanism to create even more room for luggage.

LUGGAGE  
SPACE  
5-SEAT DOUBLE CAB



\* Specification varies by grade, please see UK technical specification for full details.





## LAY MY BED

**NAVARA's** got a practical bed size with well over a metre of useful space between the wheel arches.

**THE STREAMLINED,** tubular roof rack (standard on Tekna grade) is shaped to reduce wind resistance and can carry 56kg.

**C-CHANNEL TIE-DOWN SYSTEM.** Ideal for securing all shapes of cargo for safe transportation, the system consists of four innovative channels running the length of the pick-up bed – including two fixed to the bed floor – and one running the width, plus four heavy duty cleats that move to where you need a tie-down point. This flexible system allows any type of load, however awkward, to be secured quickly and safely and is standard from Acenta grade.





## SELECT FROM 3 DRIVING MODES

Command and control:

- > **2WD HIGH** powers the rear wheels only for use in normal conditions.
- > **4WD HIGH** gives a 50/50 front/rear spread for light off-roading in mud or snow.
- > **4WD LOW** is for serious off-road driving in sand, snow or deep mud and for maximum traction while climbing and maximum engine braking on descent.



20  
TECHNOLOGY & PERFORMANCE

### STABLE AND SOUND.

Nissan's Electronic Stability Protection system automatically activates the ABS, traction and control features to help you handle difficult manoeuvres.

**3,000 kg**  
MAX TOWING\*



### ROTARY 4X4 SWITCH

Turn the dial to shift from 4X4 to 4X2 and back again in one simple movement.



### DIFFERENTIAL LOCK.

In extreme conditions, this option locks the rear differential so you never have to stop advancing.



**SAFE AND SOUND:** all-round airbags are there if you need them.

TRANSMISSION **4X4**

\* 2,700 kg on King Cab / 2,600 kg on Double Cab / 3,000 kg on Outlaw

Specification varies by grade, please see UK technical specification for full details.

21  
SAFETY AND SECURITY

[Contents](#) | [Exterior design](#) | [Interior design](#) | [Technology & Performance](#) | [Style & Accessories](#) | [Technical Specifications](#) | [Price List](#) | [Commitments](#)

[Print](#) | [Close](#)

[Page 1](#) | [Page 2](#) | [Page 3](#) | [Page 4](#)

[REQUEST A TEST DRIVE](#)





- 1) Velour textile mats
- 2) Standard textile mats
- 3) Rubber mats
- 4) Bedliner and plastic tool box
- 5) Hard top X-Line
- 6-7) Tow bar flanged or fixed
- 8) Wind deflectors
- 9) Illuminated side bars
- 10) Front parking sensors
- 11) Foglamp rings
- 12) Hood deflector
- 13) Chrome mirror caps\*

\*Standard on Tekna & Outlaw grades





## COLOURS



\* ELECTRIC BLUE - M - **RAK**



STARBURST SILVER - M - **KLO**



CAYMAN BLUE - M - **BW9**



SLATE - M - **KAP**



ALBASTAR WHITE - S - **QM1**



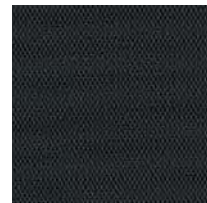
METALLIC BLACK - M - **GN0**

\*Ends January 2014

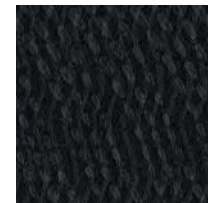
M = METALLIC - S = SOLID

24  
COLOURS

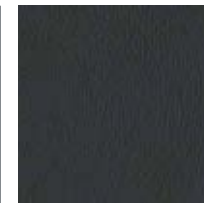
## TRIMS



**VISIA**  
Black cloth

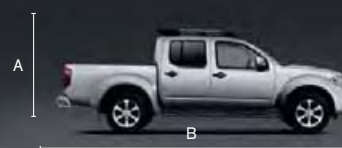


**ACENTA**  
Black cloth



**TEKNA/OUTLAW**  
Black leather

## DIMENSIONS



### DOUBLE CAB

A: Overall height: 1,913MM (with roof bars)  
B: Overall length: 5,296MM  
C: Overall width: 1,848MM (excluding mirrors)

### FLOOR

Height: 457MM  
Length: 1,511MM  
Width: 1,560MM



### KING CAB

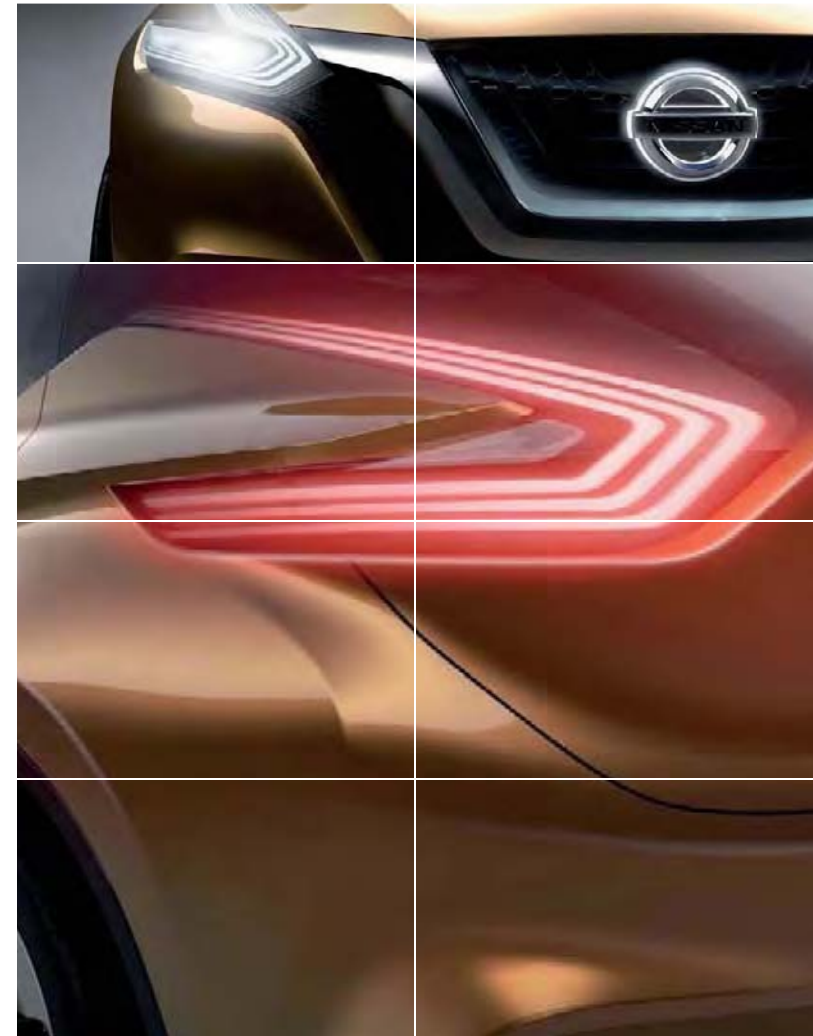
A: Overall height: 1,785MM  
B: Overall length: 5,296MM  
C: Overall width: 1,848MM (excluding mirrors)

### FLOOR

Height: 457MM  
Length: 1,861MM  
Width: 1,560MM



COLOURS/TRIMS



**AT NISSAN, YOU BRING OUT THE BEST IN US.**

You spark our imagination. You provoke our ingenuity. You inspire us to change the rules and innovate. And at Nissan, innovation is not just about additions and extensions; it's about crossing the line to reinvent the status quo. It's about developing unexpected solutions to satisfy your wildest and most pragmatic desires. At Nissan, we design cars, accessories and services that break the mould - making the practical exciting and the exciting practical to offer you a more exhilarating driving experience everyday.



**NISSAN NAVARA OFFERS YOU:**

**3-YEAR WARRANTY**

**12-YEAR ANTI-CORROSION WARRANTY**

**12,500 MILE SERVICE INTERVAL**

\* whichever comes first

**REQUEST A TEST DRIVE**







visit our website at: [www.nissan.co.uk/navara](http://www.nissan.co.uk/navara)

Follow Nissan NAVARA on:



Every effort has been made to ensure that the content of this publication is correct at the time of going to press (September 2013). This brochure has been produced featuring prototype vehicles exhibited at motor shows. In accordance with the company's policy of continuously improving its products, Nissan International reserves the right to change at any time the specification and the vehicles described and shown in this publication. Nissan dealers will be informed of any such modifications as quickly as possible. Please check with your local Nissan dealer to receive the most up-to-date information. Because of the limitations of the printing processes used, the colours shown in this brochure may differ slightly from the actual colours of the paint and interior trim materials used. All rights reserved. Reproduction in whole or part of this brochure without the written permission of Nissan International is forbidden.

This brochure is made from chlorine free paper - NAVARA GEB 09/2013 - Printed in EU. Part Number 99999-54115  
Created by NEW BBDO, France - Tel: +33 1 40 62 37 37 and produced by E-GRAPHICS/France, France - Tel: +33 1 49 09 25 35.

Dealer stamp:

[REQUEST A TEST DRIVE](#)





Innovation  
that excites

# NISSAN NAVARA



[Contents](#) | [Exterior design](#) | [Interior design](#) | [Technology & Performance](#) | [Style & Accessories](#) | [Technical Specifications](#) | [Price List](#) | [Commitments](#)

[Print](#) | [Close](#)

[REQUEST A TEST DRIVE](#)





The Navara is all about freedom, including freedom of choice. That's why we offer a Double Cab or King Cab, two transmissions, five core grades – quite apart from the range of colours and accessories that all let you create your perfect, personalised Navara.



#### **VISIA** DOUBLE CAB STANDARD FEATURES

##### **DRIVE TRAIN**

- 2.5 dCi with 144 PS / 350 Nm
- Part-time 4-wheel drive
- Low ratio gearbox

##### **EXTERIOR**

- 17" Alloy wheels (x4)
- Door mirrors with indicator/puddle lamp
- Tailgate lock
- One-handed tailgate release
- Tube rear bumper
- Tailgate lock

##### **SAFETY AND SECURITY**

- ESP (Electronic Stability Programme)
- ABS with EBD and Brake Assist
- Driver and passenger airbags
- Active front headrests
- 3-point rear seatbelts
- ISOFIX child seat anchoring points x2
- Superlocking for Cab
- NATS alarm
- NATS engine immobiliser
- Safety Kit (Warning Triangle, First Aid Kit and 2 High Visibility Jackets)

##### **INTERIOR**

- Cloth seat material
- 60/40 split foldable rear bench seat

##### **COMFORT AND CONVENIENCE**

- Manual Air Conditioning
- Electrically adjustable door mirrors
- Rotary selectable 4WD switch
- Remote central door locking
- Electric front and rear windows
- Power assisted steering
- Tilt adjustable steering wheel
- CD/ Radio audio
- Bluetooth telephone integration
- 2 Speakers

##### **OPTIONS AT EXTRA COST**

- External cab guard frame

#### **ACENTA** KING CAB OR DOUBLE CAB FEATURES ADDITIONAL TO VISIA

##### **DRIVE TRAIN**

- 2.5 dCi with 190 PS / 450 Nm
- Part-time 4-wheel drive
- Low ratio gearbox

##### **EXTERIOR**

- Chrome grille
- Front fog lights
- Body coloured door mirrors
- Side steps
- Rear step bumper load area
- C-Channel moveable tie-down point

##### **SAFETY AND SECURITY**

- Side & curtain airbags
- 3-point rear seatbelts (x3 on Double Cab, x2 on King Cab)
- ISOFIX child seat anchoring points x2 (Double Cab)

##### **INTERIOR**

- 60/40 split foldable rear bench seat (Double Cab only)
- Rear jump seats with under seat storage (King Cab only)
- Leather steering wheel, gear knob and handbrake
- Driver's seat height adjust
- Map reading light
- Sunglasses holder

##### **COMFORT AND CONVENIENCE**

- Dual zone climate control
- Heated door mirrors
- Cruise control with speed limiter
- Drive computer
- Electric front and rear windows (front only on King Cab)
- USB iPod connectivity
- 6 Speakers

##### **OPTIONS AT EXTRA COST**

- External cab guard frame

#### **TEKNA** DOUBLE CAB FEATURES ADDITIONAL TO ACENTA

##### **EXTERIOR**

- Roof rails
- Chrome power folding mirrors with indicator/puddle lamp
- Pop up headlamp washers
- Rear privacy glass

##### **INTERIOR**

- Graphite leather seats\*
- Heated front seats
- Power adjust driver's seat
- Illuminated footwell
- Aluminium front door entry guards

\* Some parts of leather seats may contain artificial leather

##### **COMFORT AND CONVENIENCE**

- Rain sensing windscreen wipers
- Automatic headlamps
- Auto dim rear view mirror
- Steering wheel audio controls

##### **OPTIONS AT EXTRA COST**

- Nissan Connect Premium with:
  - 7" touch screen
  - HDD Satellite Navigation
  - HDD music server
  - USB iPod connectivity
  - DVD movie playback (whilst vehicle is stationary)
  - Rear Parking camera

#### **OUTLAW V6** DOUBLE CAB FEATURES ADDITIONAL TEKNA

##### **DRIVE TRAIN**

- 3.0 dCi V6 231PS/550Nm
- 7-speed auto transmission

##### **INTERIOR**

- Electric sunroof

##### **EXTERIOR**

- 18" alloy wheels (x5)

##### **COMFORT AND CONVENIENCE**

- Nissan Connect Premium with:
  - 7" touch screen
  - HDD Satellite Navigation
  - HDD music server
  - USB iPod connectivity
  - DVD movie playback (whilst vehicle is stationary)
- BOSE™ speaker system

# NAVARA

	King Cab	Double Cab			
<b>VERSION</b>	ACENTA	VISIA	ACENTA/TEKNA	TEKNA	OUTLAW V6
<b>DRIVE TYPE</b>	Part-time 4WD	Part-time 4WD		Part-time 4WD	Part-time 4WD
<b>ENGINE</b>	YD25 Kai3	YD25 Kai3		YD25 Kai3	V9X
<b>TRANSMISSION</b>	Manual	Manual	Manual	Auto	Auto

ENGINE DESCRIPTION			YD25 Kai3	YD25 Kai3	YD25 Kai3	YD25 Kai3	V9X
Engine Code			YD25 Kai3	YD25 Kai3	YD25 Kai3	YD25 Kai3	V9X
No. of cylinders, configuration			4, in line	4, in line	4, in line	4, in line	V6 65°
Valves per cylinder			4, DOHC	4, DOHC	4, DOHC	4, DOHC	4
Air intake system			Turbo VNT Intercooler	Turbo VNT Intercooler	Turbo VNT Intercooler	Turbo Intercooler	Turbo Intercooler
Control system			ECM	ECM	ECM	ECM	ECM
Cylinder block and head			Iron/ Al	Iron/ Al	Iron/ Al	Iron/ Al	CGI (block)/Al (head)
Engine capacity		cc	2488	2488	2488	2488	2991
Bore x Stroke		mm	89 x100	89x100	89x100	89x100	84x90
Compression ratio			15:01	15:01	15:01	15:01	16:01
Camshaft drive			Chain driven	Chain driven	Chain driven	Chain driven	Single stage chain
Valve actuation			Direct (Graded shims)	Direct (Graded shims)	Direct (Graded shims)	Direct (Graded shims)	Roller Finger Follower (RFF) + Hydraulic Lash Adjuster (HLA)
Valve size (intake/exhaust)		mm	28.55 / 25.95	28.55 / 25.95	28.55 / 25.95	28.55 / 25.95	25.8/23.8
Valve timing (intake/exhaust)	opening	*BTDC	2 / 226	2 / 226	2 / 226	2 / 226	19/246
	closing	*ATDC	210 / -2	210 / -2	210 / -2	210 / -2	228/13,5
Electric throttle			Yes	Yes	Yes	Yes	Yes
Combustion principle			Compression ignition	Compression ignition	Compression ignition	Compression ignition	Compression ignition
Combustion chamber shape			Toroidal	Toroidal	Toroidal	Toroidal	Toroidal
Bearings			5	5	5	5	4
Fuel pump			Denso HP-3	Denso HP-3	Denso HP-3	Denso HP-3	Bosch CP1H
Fuel type			Diesel / Biodiesel (B10 max)	Diesel / Biodiesel (B10 max)	Diesel / Biodiesel (B10 max)	Diesel / Biodiesel (B10 max)	Diesel / Biodiesel (B10max)
Fuel type - CN or RON	min	CN/ RON	CN51	CN51	CN51	CN51	CN51
Fuel supply			Direct injection + Common rail	Direct Injection + Common rail	Direct Injection + Common rail	Direct Injection + Common rail	Common rail direct multi-injection
Emission control system			EGR + Catalyst + DPF	EGR + Catalyst + DPF	EGR + Catalyst + DPF	EGR + Catalyst + DPF	EGR + Catalyst + DPF
Cold start			Electronic Glow Plug Control Unit	Electronic Glow Plug Control Unit	Electronic Glow Plug Control Unit	Electronic Glow Plug Control Unit	Electronic Glow Plug Control Unit
Balancer assembly shafts			with	without	with	with	-
Oil capacity (min/max)		l	5.3 / 6.7	5.3 / 6.7	5.3 / 6.7	5.3 / 6.7	4.0 / 6.5
Oil Pan			Al / Steel	Al / Steel	Al / Steel	Al / Steel	Aluminium
ENGINE PERFORMANCE (according to EC 80/1269 directive)							
Maximum engine power		kW(PS)/rpm	140 (190)/ 3600	106(144)3600	140 (190)/ 3600	140 (190)/ 3600	170(231)/ 3750
Maximum engine power		bhp	187.7	142.08	187.7	187.7	228
Maximum engine torque		Nm (kgm)/rpm	450/2000	350/1600	450/2000	450/2000	550/1750
Emission class			Euro 5	Euro 5	Euro 5	Euro 5	Euro 5
TRANSMISSION SPECIFICATION							
Clutch type			Dry Plate Mech.	Dry Plate Mech.	Dry Plate Mech.	Torque Converter	Torque Converter
Transmission type			6 Speed M/T	6 Speed M/T	6 Speed M/T	5 Speed A/T	7 Speed A/T
Gear ratio	1st		4.692	4.692	4.692	3.827	4.886
	2nd		2.705	2.705	2.705	2.368	3.169
	3rd		1.747	1.747	1.747	1.52	2.027
	4th		1.291	1.291	1.291	1.000	1.411
	5th		1.000	1.000	1.000	0.834	1.000
	6th		0.827	0.827	0.827	---	0.864
	7th		---	---	---	---	0.774
	Rev		4.260	4.260	4.260	2.613	4.041
Final drive			3.692	3.692	3.692	3.538	3.133
Transfer ratio (in 4Lo mode)			2.625	2.625	2.625	2.625	2.625
Driven wheels			4WD	4WD	4WD	4WD	4WD
SECURITY							
Thatcham Security Rating			10	10	10	11	11
PERFORMANCE							
Maximum speed (Vmax)		mph (km/h)	112 (180)	104(168)	112(180)	111(178)	121 (195)
Accel. 0-100 km/h (0-62mph)		sec	10.8	13.1	11.1	10.7	9.3
Frontal area		(m**2)	2.76	2.76	2.76	2.76	2.76
Aerodynamics		Cd	0.41	0.43	0.43	0.43	0.43



	King Cab		Double Cab			
VERSION	ACENTA		VISIA	ACENTA/TEKNA	TEKNA	OUTLAW V6
DRIVE TYPE	Part-time 4WD		Part-time 4WD		Part-time 4WD	Part-time 4WD
ENGINE	YD25 Kai3		YD25 kai3		YD25 Kai3	V9X
TRANSMISSION	Manual		Manual	Manual	Auto	Auto

#### FUEL CONSUMPTION (according to EC 1999/100 directive)

		l	80	80	80	80	80
Fuel tank capacity			80	80	80	80	80
Urban cycle <sup>1)</sup>	mpg (l/100km)		26.4 (10.7)	27.4 (10.3)	26.4 (10.7)	24.6 (11.5)	22.2 (12.7)
Extra urban <sup>1)</sup>	mpg (l/100km)		39.8 (7.1)	40.4 (7.0)	39.8 (7.1)	38.2 (7.4)	37.2 (7.6)
Combined <sup>1)</sup>	mpg (l/100km)		33.6 (8.4)	34.5 (8.2)	33.6 (8.4)	31.8 (8.9)	29.7 (9.5)
CO2 mass emission (combined)	g/km		222	215	222	235	250

#### NOISE (according to EC 1999/101 directive)

		(dB(A))	75	75	75	75	75.4
Driving noise level			75	75	75	75	75.4
Standing noise level	(dB(A))/rpm		80	80	80	81	79.5

#### EXTERIOR DIMENSIONS

		mm	5296	5296	5296	5296	5296
Overall length (Rr Bumper Step type)			5296	5296	5296	5296	5296
Overall length (Without Rr Bumper)			5222	5222	5222	5222	5222
Overall width (excl. mirrors)			1848	1848	1848	1848	1848
Max Overall height (w/o roofrails)	Max	mm	1783	1797	1795	1795	1795
Max Overall height (with roofrails)	Max	mm	--	-	1905	1905	1906
Wheelbase		mm	3200	3200	3200	3200	3200
Overhang	Front	mm	866	866	866	866	866
Overhang (Rr Bumper step type)	Rear	mm	1230	1230	1230	1230	1230
Overhang (with Rr Bumper)			1156	1156	1156	1156	1156
Track	Front	mm	1570	1570	1570	1570	1570
Track	Rear	mm	1570	1570	1570	1570	1570

#### DOORS & SEATING CAPACITY

			2	2	2	2	2
Number of seats	1st Row		2	2	2	2	2
	2nd Row		2	3	3	3	3
Door length	Front	mm	1118.5	1118.5	1118.5	1118.5	1118.5
	Rear	mm	596	874	874	874	874
Door opening angle	Front	°	65	65	65	65	65
	Rear	°	88	76	76	76	76

#### BED SIZE

		mm	1861	1511	1511	1511	1511
Length	Floor	mm	1861	1511	1511	1511	1511
	Top	mm	1837	1487	1487	1487	1487
Width	Floor	mm	1560	1560	1560	1560	1560
	Top	mm	1496	1496	1496	1496	1496
Width (between wheelarches)		mm	1130	1130	1130	1130	1130
Opening width		mm	1432	1432	1432	1432	1432
Height		mm	457	457	457	457	457

#### INTERIOR PACKAGING

		mm	1780	2130	2130	2130	2130
Effective interior length (A-Pillar ~ Back panel)			1780	2130	2130	2130	2130
Front head room (w/o sunroof)		mm	111	111	111	111	111
Front head room (with sunroof)		mm	--	--	--	--	73
Second row head room		mm	50	90	90	90	90
Front knee room		mm	632	632	632	632	632
Second row knee room		mm	448	612	612	612	612
Front shoulder room		mm	1480	1480	1480	1480	1480
Second row shoulder room		mm	1394	1480	1480	1480	1480
Front HIP room		mm	1480	1480	1480	1480	1480
Second row HIP room		mm	1366	1480	1480	1480	1480

#### WEIGHTS

		kg	1990	2085	2085	2100	2150
Kerb weight		kg	1990	2085	2085	2100	2150
Gross vehicle weight		kg	3110	3210	3210	3210	3240
Maximum payload		kg	1215	1250	1250	1210	1130
Permissible axle weight front		kg	1370	1470	1470	1470	1530
Permissible axle weight rear		kg	1960	1960	1960	1960	2033
Max. towing capacity weight braked @ 12%		kg	2700	2600	2600	2600	3000
Max. trailer weight unbraked		kg	750	750	750	750	750
Permissible vertical force on hitch ball		kg	108	104	104	104	120
Towbar load limit		kg	20	20	20	20	20
Max. roof load with roof bars		kg	-	-	56	56	56

<sup>1)</sup> MPG figures are obtained from laboratory testing, in accordance with 2004/3/EC and intended for comparisons between vehicles and may not reflect real driving results. (Optional equipment, maintenance, driving behaviour, road and weather conditions may affect the official results).

	King Cab			Double Cab				
<b>VERSION</b>	ACENTA			VISA	ACENTA/TEKNA	TEKNA	OUTLAW V6	
<b>DRIVE TYPE</b>	Part-time 4WD			Part-time 4WD	Part-time 4WD		Part-time 4WD	
<b>ENGINE</b>	YD25 Kai3			YD25 Kai3	YD25 Kai3		V9X	
<b>TRANSMISSION</b>	Manual			Manual	Manual	Auto	Auto	
<b>BRAKES SYSTEM</b>								
Brakes system	2 circuits; Front & Rear distribution, Power assisted, ABS, EBD & BA & ESP			2 circuits; Front & Rear distribution, Power assisted, ABS, EBD & BA & ESP				
Size	Front	Vented Disc (320 x 28)			Vented Disc (320 x 28)	Vented Disc (320 x 28)	Vented Disc (320 x 28)	Vented Disc (320 x 28)
	Rear	Drum 295			Drum 295	Drum 295	Drum 295	Drum 295
<b>STEERING</b>								
Steering system	Rack & Pinion Power Assisted			Rack & Pinion Power Assisted	Rack & Pinion Power Assisted	Rack & Pinion Power Assisted	Rack & Pinion Power Assisted	Rack & Pinion Power Assisted
Turning circle, wall to wall		m	13.8	13.8	13.8	13.8	13.8	13.8
Turning circle, kerb to kerb		m	13.3	13.3	13.3	13.3	13.3	13.3
Overall steering ratio			21.6	21.6	21.6	21.6	21.6	21.6
Linear steering ratio		mm/rev	44	44	44	44	44	44
Lock to Lock			3.8	3.8	3.8	3.8	3.8	3.8
<b>SUSPENSION</b>								
Front suspension	Double wishbone with coil over strut			Double wishbone with coil over strut	Double wishbone with coil over strut	Double wishbone with coil over strut	Double wishbone with coil over strut	Double wishbone with coil over strut
Rear suspension	Rigid leaf spring			Rigid leaf spring	Rigid leaf spring	Rigid leaf spring	Rigid leaf spring	Rigid leaf spring
<b>WHEELS &amp; TYRES</b>								
Wheel size		inches	17 x 7JJ	17 x 7JJ	17 x 7JJ	17 x 7JJ	17 x 7JJ	18 x 7JJ
Tyre size			255/65 R17	255/65 R17	255/65 R17	255/65 R17	255/65 R17	255/60 R18
<b>OFF ROAD CAPABILITY (measured in running order weight condition)</b>								
Approach angle	Min	°	30	30	30	30	30	30
Min Departure angle (Rr Bumper Step type)		°	24	24	24	24	24	24
Min Departure angle (Re Bumper Tube type)		°	26	26	26	26	26	26
Ramp over angle	Min	°	22	22	22	22	22	22
Maximum climbable gradient		°	39	39	39	39	39	39
Maximum lateral inclination		°	49.8	49.8	49.8	49.8	49.8	49.8
Minimum ground clearance (between axles)		mm	228	228	228	228	228	230
Maximum wading depth		mm	450	450	450	450	450	450
<b>OTHER</b>								
Engine starter output		kw	2.2	2.2	2.2	2.2	2.2	2.2
Battery capacity		Ah	70	70	70	70	70	95
Clutch diameter (inner/outer)		mm	180 / 275	180 / 275	180 / 275	180 / 275	--	--
Airbag size	Dr/As	L	45/90	45/90	45/90	45/90	45/90	45 / 90
Number of master keys			2	2	2	2	2	2
Fuel lid lock			Yes	Yes	Yes	Yes	Yes	Yes
Tyre speed limit (Std)			H (210km/h)	H (210km/h)	H (210km/h)	H (210km/h)	H (210km/h)	H (210 km/h)
Rear suspension size		mm	1400 x 60 x (2x9 + 2x15)	1400 x 60 x (2x9 + 2x15)	1400 x 60 x (2x9 + 2x15)	1400 x 60 x (2x9 + 2x15)	1400 x 60 x (2x9 + 2x15)	1400 x 60 x (2x8 + 1x9 + 1x18)
Under cover			Yes (Metal)	Yes (Metal)	Yes (Metal)	Yes (Metal)	Yes (Metal)	Yes (Metal)
Side protection bars (Fr Door LH/RH) & (Rr Door LH/RH)			(1/1) & (1/1)	(1/1) & (1/1)	(1/1) & (1/1)	(1/1) & (1/1)	(1/1) & (1/1)	(1/1) & (1/1)
Frame cross members bars			8	8	8	8	8	8





**You care about your Nissan so Nissan will care for you.**

**That's why we'll make the following commitment:**

- YOU** care about staying on the road when your Nissan is in for service or repair.
- NISSAN** will keep you mobile free of charge.
- +++++
- YOU** care about quality enough to have your Nissan serviced at a Nissan dealership.
- NISSAN** says thanks by giving you continuous Nissan Roadside Assistance for free.
- +++++
- YOU** care about getting the best value for money when it comes to service and repair.
- NISSAN** will price match like for like competitor written quotes within 10 miles of your local dealer.
- +++++
- YOU** care about having your problems resolved quickly.
- NISSAN** will propose how to resolve any problem within two working days.
- +++++
- YOU** care about getting the right Nissan model, engine & gearbox to test drive.
- NISSAN** will guarantee that's what you'll get when you pre-book your test drive either online or through our customer service centre.

For terms and conditions, please visit [nissan.co.uk/care](http://nissan.co.uk/care)

INTRODUCING  
OUR  
COMMITMENT TO  
YOU

YOU + NISSAN  
**CARE**

**REQUEST A TEST DRIVE**





Nissan. Innovation that excites.

Visit our websites at:

[www.nissan.co.uk](http://www.nissan.co.uk)

[www.nissan.co.uk/navara](http://www.nissan.co.uk/navara)

Dealer stamp:

Every effort has been made to ensure that the content of this publication is correct at the time of going to press (June 2013). In accordance with the company's policy of continuously improving its products, Nissan Europe reserves the right to change at any time the specification and the vehicles described and shown in this publication. Nissan dealers will be informed of any such modifications as quickly as possible. Please check with your local Nissan dealer to receive the most up-to-date information. All rights reserved. Reproduction in whole or part of this brochure without the written permission of Nissan Europe is forbidden.

Part Number 99999-54108. Printed in the UK.

[REQUEST A TEST DRIVE](#)





[Contents](#) | [Exterior design](#) | [Interior design](#) | [Technology & Performance](#) | [Style & Accessories](#) | [Technical Specifications](#) | [Price List](#) | [Commitments](#) | [Print](#) | [Close](#)

[Navara Model and option prices](#) | [Further Information](#)

[REQUEST A TEST DRIVE](#)



# NAVARA

Engine	Version	Body	Transmission	Basic Price	VAT	Total Retail Price	On The Road Price	CV OTR
2.5 dCi 144PS	VISIA	Double Cab	6 manual	18,095.83	3,619.17	21,715.00	21,995.00	18,375.83
2.5 dCi 190PS	ACENTA	King Cab	6 manual	18,512.50	3,702.50	22,215.00	22,495.00	18,792.50
		Double Cab	6 manual	19,762.50	3,952.50	23,715.00	23,995.00	20,042.50
	TEKNA	Double Cab	6 manual	22,345.83	4,469.17	26,815.00	27,095.00	22,625.83
			5 auto	23,808.33	4,761.67	28,570.00	28,850.00	24,088.33
3.0 V6 dCi 231PS	OUTLAW V6		7 auto	30,716.67	6,143.33	36,860.00	37,140.00	30,996.67

The Basic Delivered prices excludes VAT but includes delivery to the dealership and number plates. The Basic On The Road price excludes VAT but includes delivery to the dealership, number plates, 12 months Government Vehicle Excise Duty (£225 for Light Commercial Vehicles) and Government First Registration Fee of £55.





## NAVARA OPTIONS

	VISIA	ACENTA	TEKNA	OUTLAW V6	Basic	VAT	Total
Metallic or pearlescent paint	<input type="radio"/>	<input type="radio"/>	<input type="radio"/>	<input type="radio"/>	412.50	82.50	495
External cab guard frame	<input type="radio"/>	<input type="radio"/>			162.50	32.50	195
Nissan Connect Premium (HDD sat nav, Nissan Music Box and rear parking camera)			<input type="radio"/>	<input checked="" type="radio"/>	1,375.00	275.00	1,650



	VISIA	ACENTA	TEKNA	OUTLAW V6	Basic	VAT	Total
<b>X-Line Hardtop Pack^^</b> ▪ X-Line Hardtop ▪ Bed liner ▪ Tailgate liner	<input type="checkbox"/>	<input type="checkbox"/>	<input type="checkbox"/>	<input type="checkbox"/>	1,999.99	400	2,399.99
Delivery Pack (rubber mats, spare bulb and fuse set, Nissan care pack*)	<input type="checkbox"/>	<input type="checkbox"/>	<input type="checkbox"/>	<input type="checkbox"/>	41.67	8.33	50
Armadillo Style Pack (Armadillo roll top, Sports bar, lashing rails)	<input type="checkbox"/>	<input type="checkbox"/>	<input type="checkbox"/>	<input type="checkbox"/>	1,849.99	370	2,219.99
Roll N Lock Pack	<input type="checkbox"/>	<input type="checkbox"/>	<input type="checkbox"/>	<input type="checkbox"/>	1,199.00	239.80	1,438.80
Protection Pack (bedliner dc, tailgate liner, fitting kit, rubber mats dc)	<input type="checkbox"/>	<input type="checkbox"/>	<input type="checkbox"/>	<input type="checkbox"/>	250.00	50.00	300
Clarion intergrated audio / sat nav			<input type="checkbox"/>		749.99	150	899.99
Rear park sensors		<input type="checkbox"/>	<input type="checkbox"/>	<input type="checkbox"/>	313.33	62.67	376
Rubber Mats (front and rear)	<input type="checkbox"/>	<input type="checkbox"/>	<input type="checkbox"/>	<input type="checkbox"/>	38.33	7.67	46
Bed liner, tailgate liner and fitting kit (Double Cab)	<input type="checkbox"/>	<input type="checkbox"/>	<input type="checkbox"/>	<input type="checkbox"/>	276.67	55.33	332
Side bars with steps (prices from)	<input type="checkbox"/>	<input type="checkbox"/>	<input type="checkbox"/>	<input type="checkbox"/>	541.67	108.33	650
Sports bar#^	<input type="checkbox"/>	<input type="checkbox"/>	<input type="checkbox"/>	<input type="checkbox"/>	590.00	118.00	708
S-Line hardtop# (Double Cab only)	<input type="checkbox"/>	<input type="checkbox"/>	<input type="checkbox"/>	<input type="checkbox"/>	1,890.00	378.00	2,268
X-Line hardtop# (Double Cab only)	<input type="checkbox"/>	<input type="checkbox"/>	<input type="checkbox"/>	<input type="checkbox"/>	2,000.00	400.00	2,400
Snugtop Cab-Hi Solid Side#	<input type="checkbox"/>	<input type="checkbox"/>	<input type="checkbox"/>	<input type="checkbox"/>	1,458.33	291.67	1,750
Snugtop Supersport#	<input type="checkbox"/>	<input type="checkbox"/>	<input type="checkbox"/>	<input type="checkbox"/>	1,883.33	322.67	2,206
Snugtop XTR#	<input type="checkbox"/>	<input type="checkbox"/>	<input type="checkbox"/>	<input type="checkbox"/>	2,133.33	426.67	2,560
Towbar and electrics (prices from)##	<input type="checkbox"/>	<input type="checkbox"/>	<input type="checkbox"/>	<input type="checkbox"/>	300	60	360
'Roll-N-Lock' Tonneau cover	<input type="checkbox"/>	<input type="checkbox"/>	<input type="checkbox"/>	<input type="checkbox"/>	1,082.49	216.50	1,298.99

Optional - ○ Standard - ● Optional Dealer Fit - □

# Not compatible with vehicles fitted with a guard frame , bed caps, bed railings or style bar

## Price quoted for flanged towbar with single electrics

^ Compatible with Armadillo Roll Top, additional canister lid required

^^ Please check colour availability

\* Nissan care pack includes: Nissan branded toggle bag, large car wash sponge, wash 'N' wax sachet, screen bug shifter sponge, chamoix de-mister pad, screenwash sachet, pocket torch (including batteries)

Speak to your Nissan dealer for pricing and compatibility of accessories to specific Navara models and grades Dealer fit option prices include fitting but are only a guide. Please check with your local Nissan dealer for exact prices.



# NISSAN CARE WARRANTY

- Provides protection for up to 3 additional years **on top of the New Vehicle Warranty.**
- Available for vehicles under 3 years old/60,000 miles from point of purchase.

Model	Retail exc. VAT	Retail inc. VAT
NEW MICRA	£165.83	£199
NEW NOTE	£165.83	£199
JUKE / NEW JUKE	£190.51	£229
ALL NEW QASHQAI / JUKE NISMO	£215.64	£259
X-TRAIL / ALL NEW X-TRAIL	£469.29	£568
NAVARA	£569.59	£688
PATHFINDER	£569.59	£688
GT-R	£2,299.50	£2,758

Prices above are for an additional 1 Year Nissan Care Warranty on top of the standard new car warranty. The warranty expires either 4 years or 60,000 miles from the date of vehicle registration, whichever comes first. Further age/mileage options are available.

# NISSAN INSURANCE

Nissan Insurance has been designed to help Nissan drivers get the most from their cover, boasting the following benefits:

- Competitive premiums
- All repairs carried out within the Nissan Approved Repairer Network
- Only genuine Nissan replacement parts used
- The opportunity to use a courtesy car for the duration of any repairs, when you use an approved repairer (subject to availability)
- Convenient instalment plans, subject to status
- EU cover included
- 24-hour UK based claims helpline

Call Nissan Insurance today on **0845 603 4394**

Nissan Insurance is arranged and administered by Equity Insurance Brokers Limited, which is authorised and regulated by the Financial Conduct Authority. Registered Office: Library House, New Road, Brentwood, Essex CM14 4GD. Registered in England No. 258414. Nissan Motor (GB) Limited is authorised and regulated by the Financial Conduct Authority. All quotes are based on individual circumstances and are subject to insurer's underwriting criteria. Terms and conditions apply.



# FURTHER INFORMATION

**On The Road Prices.** On The Road Price includes 12 months Government Vehicle Excise Duty (VED) determined by CO<sub>2</sub> emissions figure and fuel type, £55 Government First Registration Fee, number plates and delivery to the Nissan Dealership.

VED rates are determined by the vehicles CO<sub>2</sub> emissions figures and by the type of fuel used. The following table applies to all new car registrations:

VED Band	A	B	C	D	E	F	G	H	I	J	K	L	M
CO <sub>2</sub> Emissions Figure (g/km)*	up to 100g	101-110g	111-120g	121-130g	131-140g	141-150g	151-165g	166-175g	176-185g	186-200g	201-225g	226-255g	over 255g
Petrol Car	£0	£0	£0	£0	£130	£145	£180	£290	£345	£485	£635	£860	£1,090
Diesel Car	£0	£0	£0	£0	£130	£145	£180	£290	£345	£485	£635	£860	£1,090
Alternative Fuel Car	£0	£0	£0	£0	£115	£130	£165	£275	£325	£465	£610	£830	£1,055

\* g/km = grammes of CO<sub>2</sub> per kilometre travelled.

All Light Commercial Vehicles will have a standard VED rate of £225 per annum.

## VAT and VED

VAT application is based on current HMRC guidelines, please check with HMRC for specific guidance for the vehicle you are purchasing.

VED is determined by the DVLA, please check with the DVLA for specific guidance for the vehicle you are purchasing.

**Optional equipment.** This price list features a selection from the full range of optional equipment, be they standard, dealer fit or factory options.

For further information and details of the full range, please contact your local Authorised Nissan Dealer.

**Nissan's** commitment to you includes all of the following benefits – some of which may be the reasons why you chose your new Nissan in the first place:

**Three-year/60,000 miles manufacturer's warranty** – Nissan's comprehensive warranty provides cover for your new Nissan from defects in materials or workmanship. Your vehicle is covered in all European Countries where Authorised Nissan Dealers are located. If your vehicle becomes inoperative due to a warrantable defect a towing service, when necessary, to the Authorised Nissan Dealer is covered. If a warrantable defect abroad takes more than six hours to repair, the Touring Assistance Programme will pay for a hotel room or rental car up to a certain maximum. The paint warranty covers painted body parts (excluding the underbody) for three years regardless of mileage driven. For further details please contact your local Authorised Nissan Dealer.

**LEAF** – Nissan LEAF offers a 5-year / 60,000 mile warranty on all EV dedicated components, including the lithium-ion battery, and a 3-year / 60,000 mile warranty on standard components. The Nissan LEAF lithium-ion battery state of health guarantee protects against battery capacity loss (less than 9 bars out of 12) as shown on LEAF's capacity gauge for a period of 5 years / 60,000 miles. For LEAF flex customers, the battery state of health guarantee applies for the duration of the battery lease.

**NV200 Combi** - New Vehicle Warranty is issued by Nissan International SA is valid for 3 years from the warranty start date or 60,000 miles, whichever comes first. In addition, for each new NV200 Combi sold by an authorised UK Nissan dealer, Nissan Motor (GB) Limited (NMGB) will issue an extension to the New Vehicle Warranty. This warranty extension will cover your vehicle from 60,000 miles up to 100,000 miles or 3 years from the warranty start date, whichever comes first. Please note that audio and navigation units will not be covered by the warranty extension.

# FURTHER INFORMATION

**Nissan European Roadside Assistance** is provided for the first 3 years of your vehicle's life.

Roadside, Recovery and At Home products are provided by RAC Motoring Services (Registered No. 1424399, Registered Office: 8 Surrey Street, Norwich, NR1 3NG). RAC Motoring Services (in respect of insurance mediation activities only) is authorised and regulated by the Financial Conduct Authority and within the jurisdiction of the Financial Ombudsman Service and Financial Services Compensation Scheme.

Onward Travel and European Cover are underwritten by RAC Insurance Limited (Registered No. 1424399, Registered Office: 8 Surrey Street, Norwich, NR1 3NG). RAC Insurance Limited is authorised and regulated by the Financial Conduct Authority and within the jurisdiction of the Financial Ombudsman Service and Financial Services Compensation Scheme.

Nissan EV Pan-European Roadside Assistance is provided by AXA for 3 years or 60,000 miles, whichever comes first.

For LEAF Flex (battery lease) customers, the Nissan EV Pan-European Roadside Assistance will cover you for the duration of your battery lease agreement should your Nissan EV run out of battery charge. For any other repair work, the basic warranty clause still applies.

Benefits and Services are provided by AXA Assistance. AXA Assistance is authorised and regulated by the Financial Conduct Authority (FCA).

FCA Register number 439069. AXA Assistance UK Limited (registration 2638890) 106 - 118 Station Road, Redhill Surrey RH1 1PR

**Peace of mind** – we always guarantee our workmanship, and all genuine Nissan replacement parts and accessories have a minimum of one year's warranty. Accessory prices are subject to change, please see your nearest dealership for the most up to date prices

Our technicians have been trained by Nissan to work on your vehicle and they are the Nissan specialists. They use the latest equipment to ensure your vehicle is given the best treatment. Accessory prices are subject to change, please see your nearest dealership for the most up to date prices.

**Recyclability** – we take all our environmental responsibilities very seriously - innovation today comes with a deep respect for the environment. Our engines are now much more unobtrusive and their emissions have been considerably reduced. All our vehicles are designed with recycling in mind.

**Nissan Finance** offers a wide range of flexible finance schemes to meet the needs of both our retail and business customers. Preferences, Hire Purchase, Nissan Contract Hire and Finance Lease, all offer the in-built flexibility to make the package tailor-made to meet your individual needs. We also provide added security to your finance agreement with a comprehensive range of payment protection plans. Ask your local Authorised Nissan Dealer for details.

**The Nissan Motability Programme** developed in association with the registered charity Motability enables those with difficulty getting around to obtain selected models on preferential terms.

All prices in this list are quoted in pounds sterling. Value Added Tax (VAT) has been calculated at 20%.

While all reasonable effort has been made to ensure the accuracy of the information provided, due to Nissan's policy of continuous product improvement, all particulars contained are subject to constant revision and Nissan reserves the right to change, alter or modify, among other things, specifications, colours and prices of models without notice at any time. Accordingly you should consult your local Authorised Nissan Dealer for the exact introduction dates of all models and for the most up-to-date information.

Images shown are for guidance purposes. In some instances photos are of non UK specification vehicles and do not represent a specific model, grade or offer.

[Contents](#) | [Exterior design](#) | [Interior design](#) | [Technology & Performance](#) | [Style & Accessories](#) | [Technical Specifications](#) | [Price List](#) | [Commitments](#) | [Print](#) | [Close](#)

[Navara Model and option prices](#) | [Further Information](#)

[Page 1](#) | [Page 2](#) | [Page 3](#) | [Page 4](#)

[REQUEST A TEST DRIVE](#)

Nissan cares for you because you care about your Nissan.  
That's why we'll make the following commitment:

**YOU** care about staying on the road when your Nissan is in for service or repair.

**YOU** care about quality enough to have your Nissan serviced at a Nissan dealership.

**YOU** care about getting the best value for money when it comes to service and repair.

**YOU** care about having your problems resolved quickly.

**YOU** care about getting the right Nissan model, engine & gearbox to test drive.

**NISSAN** will keep you mobile free of charge.

**NISSAN** says thanks by giving you continuous Nissan roadside assistance for free.

**NISSAN** will price match like for like competitor written quotes within 10 miles of your local dealer.

**NISSAN** will propose how to resolve any problem within 2 working days.

**NISSAN** will guarantee that's what you'll get when you pre-book your test drive either online or through our customer service centre.

## YOU + NISSAN CARE

You care about the car you drive. So do we. That's why we're making a commitment to providing the best customer service in the market.

Find out more [nissan.co.uk/care](https://nissan.co.uk/care)



# YOU + NISSAN CARE-EV

For terms and conditions, please visit  
[nissan.co.uk/care-ev](http://nissan.co.uk/care-ev)



**YOU** care about doing extra-long journeys in your car

**YOU** care about making the right decision when purchasing the Nissan LEAF

**YOU** care about having a functional battery

**YOU** care about always being mobile

**YOU** care about being able to charge your car quickly on your journey

**NISSAN** will lend you a petrol or diesel engine Nissan free of charge for up to 14 days every year while we develop a UK-wide rapid charging network for you

**NISSAN** will give you peace of mind by letting you test drive the LEAF for 24 hours

**NISSAN** will replace any part of the battery that causes a capacity loss of below 9 bars (out of 12) free of charge

**NISSAN** will be there to help with Nissan EV Pan-European Roadside Assistance in the unlikely event that you become stranded

**NISSAN** will let you rapid-charge your car at participating dealerships and Motorway Services free of charge

[REQUEST A TEST DRIVE](#)





## NISSAN MOTOR (GB) LIMITED

The Rivers Office Park  
Denham Way  
Maple Cross  
Rickmansworth  
Hertfordshire  
WD3 9YS

Visit our website at: [www.nissan.co.uk](http://www.nissan.co.uk)



Part Number: 99999-54151  
Prices effective from 1st July 2014 unless otherwise stated

Dealer stamp:

