

# THE MORGAN 3 WHEELER



[www.morgan3wheeler.co.uk](http://www.morgan3wheeler.co.uk)





**MORGAN  
3  
WHEELER**





## INTRO

When did you last regard a journey by motor car as an adventure? The Morgan 3 Wheeler is designed to bring the fun and passion back to personal transport. Lift the safety catch from the "bomb release" starter button, hear the massive twin cylinders detonate and choose your favourite destination.

The iconic design of the Morgan Threewheeler has been updated with 21st Century technology. The power train is a 1976cc 'V-twin' fuel injected engine mated to a Mazda 5 speed (and reverse) gearbox. This provides smooth "get in and drive" convenience with the thrill of extreme performance.

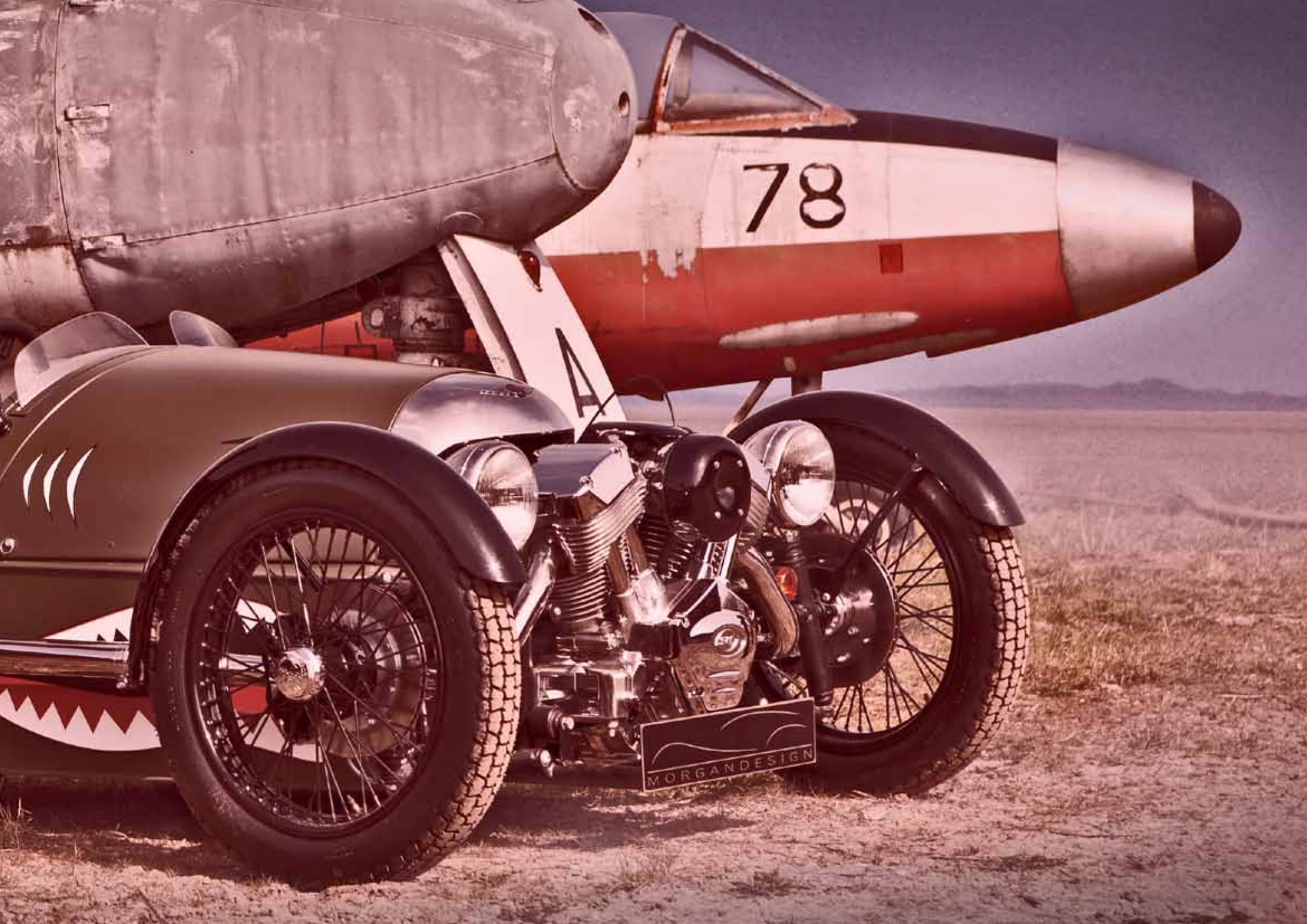
Some things have not changed. Why change the shape when the Morgan Threewheeler still holds long distance speed records for one litre cars set in the 1930's? The pronounced aluminium bullet hull and the exposed tubular chassis are accompanied by the aeroplane profile of the car's sides. The shape is of a gentle yet powerful missile at the front leading to a beetle back tail at the rear. From the design viewpoint, the focus was set on making the car as close to an aeroplane as possible, while retaining handy extra space for driver, passenger and a hold-all in the rear.

The Morgan 3 Wheeler is designed for one purpose alone, to make driving fun. A leather padded cockpit complete with aircraft instrumentation adds to the sense of flying on the road. The car seems to respond as much to thought as physical input. With an estimated 140 Newton metres of torque the motor provides maximum power at minimum revs. When coupled with a weight of 525kgs the 21st century Morgan 3 Wheeler provides unrivalled power to weight for its on the road price. The time is right for Morgan to take a new look at the combination of acceleration, performance and economy. The time is right to drive a Morgan 3 Wheeler.









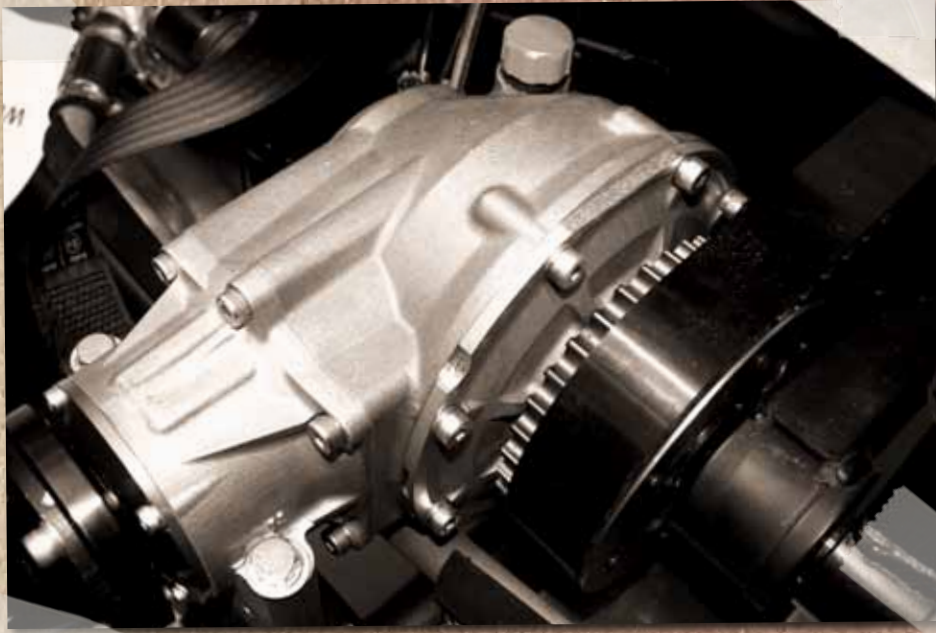
78

MORGAN DESIGN











U.S. Things change But The love





Still the Same.







## THE STANDARD CAR

A full specification ensures the driver has exactly what is needed within a well designed ergonomic driving environment. The attractive themes apparent in the Morgan Classic car range forms the basis for these vehicles. The Morgan 3 Wheeler is available in ten standard colours with gloss Black detailing and a choice of Black or Saddle brown leather. Graphic options can be applied to enhance the drama further.









The look is still the same ❤️

+



## BESPOKE BUILT

A customer can choose from a large range of options that are available to tailor a 3 Wheeler and make it unique and special. The exterior colour can be chosen from an almost unlimited spectrum. Over one hundred leather options and an array of high quality well designed parts are available to increase the cars specification.





# SPECIFICATION

The Morgan 3 wheeler boasts some impressive performance figures. A 115mph speed is reached with acceleration times of 0-60 in under 6 seconds. Every car that Morgan builds comes with a well thought out specification as standard. This includes the list of 'no cost option' items and colours below.

- » Engine: S&S 1976cc 'V twin'
- » Gearbox: 5 speed + reverse
- » Torque: 140NM @ 3250rpm(Estimated)
- » Top Speed: 115mph(Estimated)
- » 0-60 : 6.0 seconds (Estimated)
- » Dry weight: 525kg
- » Fuel tank: 42 litres
- » Aluminium body work
- » U.S. and EU approval
- » Choice of ten standard colours (Below)
- » Gloss black wheel arches and lamps
- » Gloss black wire wheels
- » Polished exhausts + heat shield
- » Nickel coloured cowl
- » Le Mans filler cap
- » Gloss Black roll hoops
- » Twin fly screens
- » Choice of Black or Saddle brown leather
- » Leather seats, dash and elbow pads
- » Exposed tubular Black steel chassis
- » Leather and alloy steering wheel
- » Black anodized dash panel
- » Aluminium 'aircraft' toggle switches
- » Body colour interior trim panels
- » 'Bomb release' style start button
- » On board digital display



Sport Blue



Sport Black



Sport Yellow



Sport Grey



Sport Green



Saddle Brown Leather



Sport Orange



Sport White



Sport Teal



Sport Sand



Sport Red



Black Leather



## OPTIONAL EXTRAS

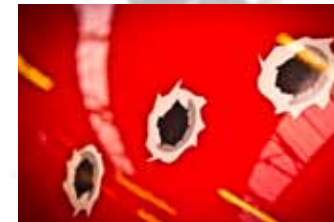
- Bright pack  
(Polished roll hoops, cowl & engine, together with chrome headlights)
- Choice of 10 Sport colours
- Black exhaust pipes and heat shield
- Black heat shield only
- Special paint  
(Any non-standard solid or metallic from our comprehensive range of colours)
- Exclusive paint
- Choice of black or tan leather
- Leather choice  
(Any colour from our comprehensive range)
- Quilted leather stitching
- Starcom1 Intercom System
- Thatcham Approved TOAD Immobiliser
- Tonneau Mohair
- Black Tonneau PVC
- Photo build book
- Many more extras available

## GRAPHICS OPTIONS

As an addition to the 'Bespoke' options, we are offering a range of 'graphic packs'. Authentically styled wraps can be applied professionally to the body of your car. The wraps are durable yet removable. For more details and pricing please contact your local dealer or visit [www.morgan3wheeler.co.uk](http://www.morgan3wheeler.co.uk).



Numbers



Bullets



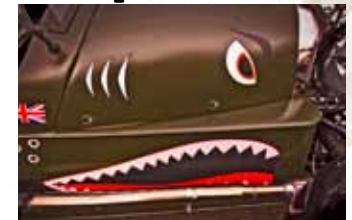
Pin up Girl



Flags



Racing stripe



Shark



3 Wheeler logo



MOG Livery



Checked





[www.morgan3wheeler.co.uk](http://www.morgan3wheeler.co.uk)

