



### Quality

We design and build your Ford to feel as good after many years of service as it did the day you picked it up. And to drive just as beautifully, too.



### Green

Using advanced technology, we're committed to creating vehicles with improved fuel economy, reduced CO2 emissions and a lower overall cost of ownership.



### Safe

Ford's Intelligent Protection System uses sophisticated technology designed to help prevent an accident and, if one should happen, to help protect you.



### Smart

Vehicles with smart, intuitive technologies designed to connect you to your world and many clever solutions from Ford that make life a little easier.



Global success.  
Made in Thailand.

# ALL-NEW RANGER

## After-Sales Services

Service Interval  
**15000** km.

9 months/15,000km service intervals, designed to minimize the maintenance cost and the number of times you need to visit your local Ford Dealer to attend to your logbook servicing needs.

**Ford Solutions**  
3 Year or 100,000 KM Warranty

For three years or 100,000km, whichever comes first, your Ford is covered

**Ford Solutions**  
**Roadside Assistance**

Our commitment to your complete satisfaction plays a major role in everything we do. That is why we provide myFord Roadside Assistance for all Ford models. Wherever and whenever you need emergency roadside assistance, help is available 24 hours a day, 365 days a year. If your vehicle breaks down and cannot be repaired, we will organise to transport your vehicle to the nearest Ford Dealer or approved service centre for repair.

**Ford Solutions**  
**Scheduled Service Plan**

15% Savings on maintenance service at scheduled intervals. With Scheduled Service Plan you have no worries over price fluctuation of lubricants, service, spare parts, in the future.

**Ford Solutions**  
**Premium Protection Plus**

It's reassuring to know that the original body of your gleaming new Ford is guaranteed against perforation corrosion for the first five years or 140,000kilometers of its life. If perforation corrosion occurs, we'll fix it for free.

**Ford Solutions**  
**Ford Ensure**

The first class insurance service by ford, together with TISCO and various leading insurance companies. Every ford vehicle protected by Ford Ensure is entitles to dependable, high-standard body paint and body repair services from any ford-approved bodyshop dealers, plus many special privileges.

**24 HOURS PARTS DELIVERY GUARANTEE**  
...OR IT'S FREE!

For 24 Hours part delivery guarantee program, part will be delivered in next operating day subject to condition and internal procedure of the company and Ford dealers. For more information visit [www.ford.co.th](http://www.ford.co.th)

Ford Call Center Tel. 0-2686-5899 (Bangkok) or Tel. 1-800-225-449 (toll-free from upcountry).

Remark : Ford reserves the right to change any specifications, sales terms and conditions, and standard equipments without prior notice. Standard equipments installed in each model may differ. Certain pictures demonstrate optional equipments. Color examples may differ from actual models due to printing process. Please read the owner's manual thoroughly.

[facebook.com/FordThailand](https://facebook.com/FordThailand)

Contact Ford Dealers

[ford.co.th](http://ford.co.th)



Go Further





## The Next Generation Of Truck

All-New Ranger is a completely new animal, designed and engineered by world's top engineers. A truck built with no compromise, it was tested in the toughest of climates and terrains across 5 continents to ensure its superior durability. With an all-new interior, equipped with latest technologies, All-New Ranger sets a new standard in its sector, offering impressive responsiveness, stability and total comfort.

Ford brought together engineering experts from around the world to design and develop the toughest pick up with outstanding looks, robust frame, impressive chassis, and safety with fuel economy in mind. The result is clear, all-new Ranger is ready for anything.

### **All-New Ranger Double Cab**

Not only delivers impressive performance but also offers more practical stowage than any competitor. With 20 storage compartments, ample cabin space, getting in and out of Ranger is easier than ever for rear-seat passengers.

### **All-New Ranger Open Cab**

The cabin and load box of Ranger has been stretched to provide spaciousness and comfort.

### **All-New Ranger Standard Cab**

Let the all-new body structure handle all of the hard work with its huge payload capacity and impressive load box volume.

**All-New Ranger is built for any challenge.**



# Conquer Every Challenge In Style

Ford has gone to great lengths to ensure that the All-New Ranger is not only a capable and good-looking vehicle, but also engineered with the latest smart technologies for connectivity and entertainment such as Voice Control and Bluetooth, the All-New Ranger is one of the smartest trucks in its class.



DOUBLECAB 2.2L WILDTRAK



OPENCAB 2.2L WILDTRAK



Special design interior sporty style



Cruise Control



Voice Control and Bluetooth connectivity



AUX and USB connectivity



Cooled centre console



# Touch Truck Driven By Smart Technology

The All-New Ranger is engineered to make every journey work or leisure more comfortable with smart technology, also help keep you and your passenger safe with Front airbags and Anti-lock Braking System (ABS) and 20 storage compartments.



1. Rain Sensing Wipers
2. Glove box that fits a laptop
3. Auto Headlamps
4. Ranger 2.2L XLT



DOUBLECAB 2.2L XLT



# Engineered To Exceed Your Expectations

All-New Ranger Opencab with all-new body design features rear doors that open at a 90° angle, giving you effortless access to its spacious and cleverly packaged interior.

All-New Ranger Standardcab, the best heavy duty truck that comes with a strong, rigid frame from front to rear bumper. The robust chassis is ready for any payload with its impressive load box volume of up to 1.82 cu.m. (the widest load box in its class), built to get any job done.



OPENCAB 2.2L XLS



1



2



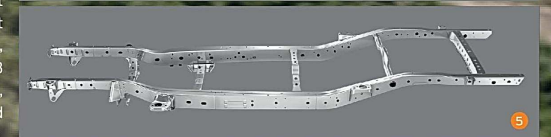
3



STANDARD CAB 2.5L XL



4



5

1. Rear doors that open at a 90° angle
2. 4-way adjustable Driver's seat
3. Rear storage compartment
4. Bigger load box 1560 x 2317 x 511 mm (W x L x H), class-leading volume: 1.82 m<sup>3</sup>
5. Bigger and stronger Chassis as a result of high strength steel, and new suspension design to support the increased payload and towing capacity. A more rigid frame also delivers a smoother ride.





## Stylish Interior Equipped With Advanced Technology

All-New Ranger has everything you expect in a truck and then takes it one step further with the latest smart Dual Zone Electronic Climate Control and leads the way on safety too, with an impressive Rear View Camera which displays the video image in the Rear View Mirror.



Dual Zone Electronic Climate Control



Rear view camera with Rear view mirror display



# More Power And Fuel Economy

Powering the All-New Ranger is the new generation of TDCi Duratorq engines, the most tough and leading-edge engine in its class. Not only durable but also delivers powerful performance and fuel economy (1500 km on one tank\*) with increase horse power and torque, the result is best-in-class towing and outstanding payload capacity.



DOUBLECAB 3.2L WILDTRAK

A powertrain that delivers, whenever you need it.

- **The powerful Duratorq 3.2L TDCi VG Turbo Diesel engine with Inter-Cooler** delivers 147kW power (200PS) and 470Nm torque. It uses a Variable Geometry Turbo-charger, which enables lower end torque capability to improve launch and drivability to optimize fuel efficiency.
- **The economical Duratorq 2.2L TDCi VG Turbo Diesel engine with Inter-Cooler** delivers 110kW power (150PS) and 330Nm torque.
- **The economical Duratorq 2.2L TDCi Turbo Diesel engine with Inter-Cooler** delivers 92kW power (125PS) and 375Nm torque.
- **The new Duratec 2.5L Benzene engine** delivers 122kW (166PS) and 226Nm torque. It uses variable cam technology for enhanced performance, fuel economy and to help minimize emissions. (E-20 compatibility)



3.2L TDCi diesel engine with Inter-Cooler 200 PS / 470 Nm

2.2L TDCi diesel engine with Inter-Cooler 150 PS / 375 Nm

2.5L Duratec benzene engine 166 PS / 226 Nm

6-Speed Manual Transmission

6-Speed automatic transmission

Advanced 4x4 Shift-on-the-Fly

## 6-Speed Manual Transmission

For the first time, the new Ranger is installed with 6-Speed Manual Transmission to provide increased torque for greater towing capability, increased fuel saving by 15% while driving in highest gear (6th gear) and reduced noise and vibration.

## 6-Speed Automatic Transmission

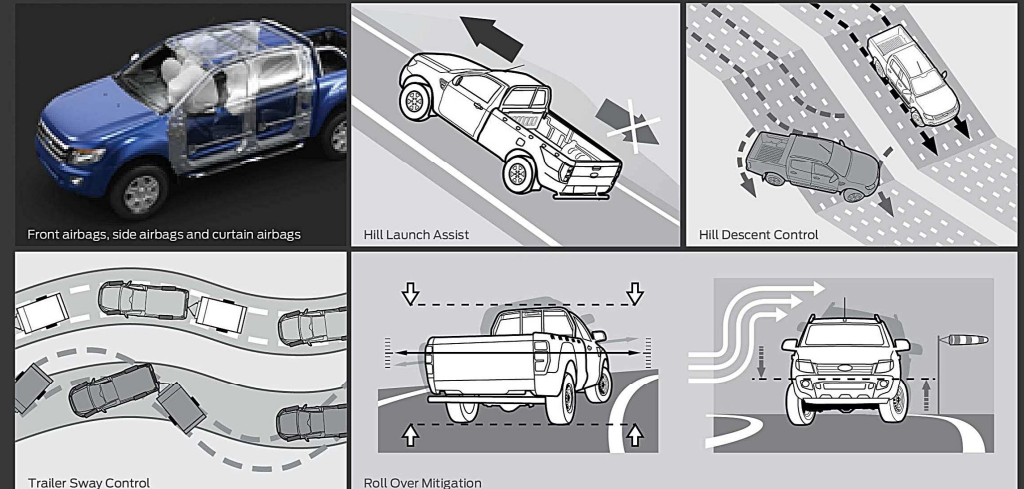
The highly advanced 6-speed sequential automatic transmission will change the definition of driving forever with fuel economy of a manual, increase performance and smoothness while shifting gears, plus greater towing capability. 6-Speed Automatic Transmission features sport mode with Brake Shift Interlock and Manual Override in which the Driver Recognition tailors its responses to individual driving styles. The new intelligent transmission also includes:

- **Grade Control Logic:** When driving downhill, with sufficient brake pedal pressure, the transmission will downshift to provide increased engine braking.
- **Brake Support Downshift:** Enables early downshifting during heavy braking, to provide engine braking and to optimize gear selection for throttle re-application response.
- **Gear Hold Around Corner:** the system will prevent gear shifting when swiftly turning corners.

\* Test according to actual driving by journalists from Chiangrai to Krabi, Fuel tank capacity at 80L, average speed at 60 km/hr. with turned-on air conditioning in Doublecab 2.2L MT model.

## Safety Made Smart

Ford has gone to great lengths to ensure that the All-New Ranger is not only a capable and good-looking vehicle, but also engineered for safety with Electronic Stability Program (ESP) program aids vehicle control and includes: Traction Control, Trailer Sway Control, Hill Descent Control, Hill Launch Assist, and Roll-Over Mitigation providing stability and greater control when towing a trailer on- and off-road. The All-New Ranger is engineered to help keep you and your passenger safe with Front airbags, side airbags and curtain airbags, also Anti-lock Braking System (ABS) and Emergency Brake Assist (EBA)



Front airbags, side airbags and curtain airbags

Hill Launch Assist

Hill Descent Control

Trailer Sway Control

Roll Over Mitigation

## Advanced 4x4 Shift-on-the-Fly

Leading edge technology of the 4-wheel-drive system in New Ranger, the advanced 4x4 Shift-on-the-Fly allows you to shift from 2-wheel-drive to 4-wheel-drive without stopping at speed up to 120 km/h.



## Exterior Colors



**SPARKLING GOLD**



**METROPOLITAN GREY**



**BLACK MICA**



**HIGHLIGHT SILVER**



**COOL WHITE**



**GUNMETAL BLUE**



**COPPER RED**



**AURORA BLUE**



**TRUE RED**



**CHILLI ORANGE**

## Wheel Style And Size



Wheel: 16" Steel  
(XL model)



Wheel: 16" Alloy  
(XLS, XLT model)



Wheel: 16" Alloy  
(XLS Hi-Rider model)

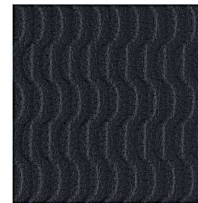


Wheel: 17" Alloy  
(4x4 XLT Hi-Rider  
and 2.2L WILDTRAK)

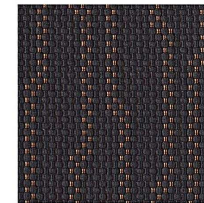


Wheel: 18" Alloy  
(3.2L WILDTRAK)

## Interior Trims



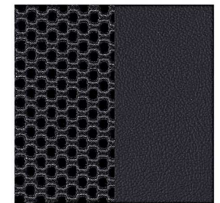
**STD XL**  
(Standard Cap)



**XL and XLS**



**XLT**



**WILDTRAK**

EXTERIOR COLORS	XL	XLS	XLT	WILDTRAK	LOWER BUMPER COLOR (WILDTRAK ONLY)
Cool White	✓	✓	✓	✓	Cool White
Highlight Silver	✓	✓	✓	✓	Highlight Silver
Metropolitan Grey	✓	✓	✓	✓	Metropolitan Grey
Black Mica	-	✓	✓	✓	Super Alloy
Sparkling Gold	-	✓	✓	-	-
Gunmetal Blue	-	✓	✓	-	-
True Red	-	-	✓	-	-
Aurora Blue	-	-	✓	-	-
Copper Red	-	-	✓	-	-
Chilli Orange	-	-	-	✓	Super Alloy



## Specification

Model	Standard Cab		Open Cab			Open Cab Hi-rider			Double Cab		
	2.5 4x2 XL 5MT	2.5 4x2 XL 5MT	2.2 4x2 XLS 6MT	2.2 4x2 XLT 6MT	2.2 4x2 XLS 6MT	2.2 4x2 XLT 6MT	2.2 4x2 Wildtrak 6MT	2.2 4x2 XLT 6MT	2.2 4x2 XLT 6MT		
<b>Dimension</b>											
Exterior Dimension : width x length x height	mm	1850 x 5274 x 1705	1850 x 5359 x 1706			1850 x 5359 x 1804			1850 x 5359 x 1716		
Wheelbase	mm	3220		3220			3220		3220		
Front track / Rear track	mm	1590		1590			1590		1590		
Ground clearance	mm	201		232			201		201		
Box : width x length x height	mm	1560 x 2317 x 511	1560 x 1847 x 511			1560 x 1847 x 511			1560 x 1549 x 511		
<b>Engine</b>											
Engine model	Duratec 2.5L VCT					Duratorq 2.2L					
Engine type			In-line 4-cylinder, 16V								
Displacement	cc	2488		2198			2198		3198		
Bore x stroke	mm	89 x 100		86 x 94.6			86 x 94.6		89.9 x 100.7		
Compression ratio	mm	9.7:1		15.7:1			15.7:1		15.7:1		
Maximum power	Kw(PS)/rpm	166 (122) / 5500		125 (92) / 3700		150 (110) / 3700		150 (110) / 3700		200 (147) / 3000	
Maximum torque	Nm/rpm	226 / 4500		330/1750-2300		375 / 1500-2500		375 / 1500-2500		470 / 1750-2500	
Fuel management system	Sequential Multi-Port Injection		Turbocharged Commonrail Injection								
Fuel tank capacity	L	80		80			80		80		
Transmission	5-Speed Manual		6-Speed Manual			6-Speed Manual			6-Speed Automatic		
<b>Chassis</b>											
Front suspension			Double Wishbone with Coil Spring			Double Wishbone with Coil Spring			Double Wishbone with Coil Spring		
Rear suspension			Leaf Springs			Leaf Springs			Leaf Springs		
Front brake			Ventilated Discs			Ventilated Discs			Ventilated Discs		
Rear brake			Drum			Drum			Drum		
Steering system			Rack and Pinion with Power Assist			Rack and Pinion with Power Assist			Rack and Pinion with Power Assist		
Wheels	Steel wheel 16"		Alloy wheel 16"			Alloy wheel 17"		Alloy wheel 16"		Alloy wheel 18"	
Tyres	215/70 R16		215/70 R16			255/70 R16		265/65 R17		215/70 R16	

## Standard Equipment

Model	Standard Cab		Open Cab			Open Cab Hi-rider			Double Cab	
	2.5 4x2 XL 5MT	2.5 4x2 XL 5MT	2.2 4x2 XLS 6MT	2.2 4x2 XLT 6MT	2.2 4x2 XLS 6MT	2.2 4x2 XLT 6MT	2.2 4x2 Wildtrak 6MT	2.2 4x2 XLT 6MT	2.2 4x2 XLT 6MT	
<b>Exterior</b>										
Front Grille	Black	Black	Silver	Chrome	Silver	Chrome	Wildtrak	Chrome	Chrome	
Door Handle	Black	Black	Black	Chrome	Black	Chrome	Black	Chrome	Chrome	
Front Bumper-Body Color	Black	•	•	•	•	•	•	•	•	
Rear Bumper	-	-	Body Color	Chrome	Body Color	Chrome	Wildtrak	Chrome	Chrome	
Side Steps	-	-	-	-	•	•	•	-	-	
Sports Bar and Roof Rails	-	-	-	-	-	-	•	-	-	
Box Rails	-	-	-	-	-	-	•	-	-	
Auto Headlamps	-	-	-	•	-	•	•	•	•	
Fog Lamps	-	-	•	•	•	•	•	•	•	
Side Mirror	Black	Black	Body Color	Chrome	Body Color	Chrome	Wildtrak	Chrome	Chrome	
Power Adjustable & Foldable Side Mirrors with Turning Indicator	-	-	Power Adjustable	•	Power Adjustable	•	•	•	•	
Puddle Lamps	-	-	-	-	-	-	•	-	-	
Bedliner & 12V socket on bedliner	-	-	-	-	-	-	•	-	-	
<b>Interior</b>										
Rain Sensing Wipers	-	-	-	•	-	•	•	•	•	
Dome Interior Lamp	•	•	•	•	•	•	•	•	•	
Steering Wheel & Gear Shift Knob	PU	PU	PU	Leather	PU	Leather	Wildtrak	Leather	Leather	
Audio Control on Steering Wheel	-	-	-	-	-	-	•	-	•	
Cruise Control	-	-	-	-	-	-	-	-	-	
Air Conditioning Manaul A/C	•	•	•	•	•	•	•	•	•	
Driver Sun Visor with Strap	•	•	•	•	•	•	•	•	•	
Passenger Sun Visor with Mirror	-	-	•	•	•	•	•	•	•	
Power Front Windows with Driver's 1-touch Up/Down	-	-	•	•	•	•	•	•	Power Rear Windows	
Remote Flip Key	-	-	•	•	•	•	•	•	•	
Interior Door Handle Chrome	-	-	-	•	-	•	•	•	•	
Seat and Door Panel	Vinyl & Plastic	Fabric	Fabric	Premium Fabric	Fabric	Premium Fabric	Wildtrak	Premium Fabric	Premium Fabric	
4-way Manual Adjustment Driver Seat	2-Way	2-Way	•	•	•	•	•	•	•	
Rear Seat with Head Restraints	-	-	-	-	-	-	-	•	•	
Floor Mat - Driver only	-	•	-	•	•	•	-	•	•	
Wildtrak (Floor Mats - Wildtrak)	-	-	-	-	-	-	-	-	-	
Overhead Console	-	-	-	•	-	•	•	•	•	
Center Console with Cupholders	•	•	•	•	•	•	•	•	•	
<b>Audio</b>										
FM/AM Stereo Radio, Single CD/MP3 Player	Only Radio	•	•	•	•	•	•	•	•	
AUX (AUX-in)	-	-	-	-	-	-	AUX & USB	-	-	
Bluetooth with Voice Control	-	-	-	-	-	-	-	-	-	
Speakers	2	2	6	6	6	6	6	6	6	
Large Screen Color Matrix Multi-function Display	-	-	•	•	•	•	•	•	•	
<b>Safety</b>										
ABS with EBD	-	-	•	•	•	•	•	•	•	
Rear Window Defrost	-	-	-	•	-	•	•	•	•	
Front Driver and Passenger Airbags	-	-	-	•	-	•	•	•	•	
Rear Seatbelt	Middle of front seat	-	-	-	-	-	-	-	•	
Limited Slip Rear Differential	-	-	-	-	-	-	•	-	-	

### 3.2L Wildtrak Features, plus :

+ Electrochromatic Rear View Mirror	+ ESP with Traction Control System	+ Rear Parking Sensors
+ Rear View Camera	+ Alarm System	+ Front Side Airbags and Side Curtain Airbags
+ Beltminder	+ Cooled Console	

Remark : • = Standard, - = Not available

## Specification

Model	Double Cab Hi-rider				Double Cab 4x4		
	2.2L 4x2 XLT 6MT	2.2L 4x2 XLT 6AT	2.2L 4x2 Wildtrak 6MT	2.2L 4x2 Wildtrak 6AT	2.2L 4x4 XLT 6MT	2.2L 4x4 Wildtrak 6AT	3.2L 4x4 Wildtrak 6AT
<b>Dimension</b>							
Exterior Dimension : width x length x height	mm				1850 x 5359 x 1815		
Wheelbase	mm				3220		
Front track / Rear track	mm				1590		1560
Ground clearance	mm				232		201
Box : width x length x height	mm				1560 x 1549 x 511		
<b>Engine</b>							
Engine model	Duratec 2.2L				Duratorq 3.2L		Duratorq 3.2L
Engine type	In-line 4-cylinder, 16V				In-line 5-cylinder, 20V		In-line 5-cylinder, 20V
Displacement	cc				2198		3198
Bore x stroke	mm				86 x 94.6		89.9 x 100.7
Compression ratio	mm				15.7:1		15.7:1
Maximum power	Kw(PS)/rpm				150 (110) / 3700		200 (147) / 3000
Maximum torque	Nm/rpm				375 / 1500-2500		470 / 1750-2500
Fuel management system	Turbocharged Commonrail Injection				Turbocharged Commonrail Injection		
Fuel tank capacity	L				80		
Transmission	6-Speed Manual	6-Speed Automatic	6-Speed Manual	6-Speed Automatic	6-Speed Manual	6-Speed Automatic	
<b>Chassis</b>							
Front suspension					Double Wishbone with Coil Spring		
Rear suspension					Leaf Springs		
Front brake					Ventilated Discs		
Rear brake					Drum		
Steering system					Rack and Pinion with Power Assist		
Wheels					Alloy wheel 17"		Alloy wheel 18"
Tyres					265/65 R17		265/60 R18

## Standard Equipment

Model	Double Cab Hi-rider				Double Cab 4x4		
	2.2L 4x2 XLT 6MT	2.2L 4x2 XLT 6AT	2.2L 4x2 Wildtrak 6MT	2.2L 4x2 Wildtrak 6AT	2.2L 4x4 XLT 6MT	2.2L 4x4 Wildtrak 6AT	3.2L 4x4 Wildtrak 6AT
<b>Exterior</b>							
Front Grille	Chrome	Chrome	Wildtrak	Wildtrak	Chrome	Wildtrak	Wildtrak
Door Handle	Chrome	Chrome	Black	Black	Chrome	Black	Black
Front Bumper-Body Color	•	•	•	•	•	•	•
Rear Bumper	Chrome	Chrome	Wildtrak	Wildtrak	Chrome	Wildtrak	Wildtrak
Side Steps	•	•	•	•	•	•	•
Sports Bar and Roof Rails	-	-	•	•	-	•	•
Box Rails	-	-	•	•	-	•	•
Auto Headlamps	•	•	•	•	•	•	•
Fog Lamps	•	•	•	•	•	•	•
Side Mirror	Chrome	Chrome	Wildtrak	Wildtrak	Chrome	Wildtrak	Wildtrak
Power Adjustable & Foldable Side Mirrors with Turning Indicator	•	•	•	•	•	•	•
Puddle Lamps	-	-	•	•	-	•	•
Bedliner & 12V socket on bedliner	-	-	•	•	-	•	•
<b>Interior</b>							
Rain Sensing Wipers	•	•	•	•	•	•	•
Dome Interior Lamp	•	•	•	•	•	•	•
Steering Wheel & Gear Shift Knob	Leather	Leather	Wildtrak	Wildtrak	Leather	Wildtrak	Wildtrak
Audio Control on Steering Wheel	-	-	•	•	-	•	•
Cruise Control	-	-	•	•	-	•	•
Air Conditioning Manaul A/C	•	•	•	•	•	•	Dual Zone Climate Control
Driver Sun Visor with Strap	•	•	•	•	•	•	•
Passenger Sun Visor with Mirror	•	•	•	•	•	•	•
Power Front Windows with Driver's 1-touch Up/Down	Power Rear Windows				Power Rear Windows		
Remote Flip Key	•	•	•	•	•	•	•
Interior Door Handle Chrome	•	•	•	•	•	•	•
Seat and Door Panel	Premium Fabric	Premium Fabric	Wildtrak	Wildtrak	Premium Fabric	Wildtrak	Wildtrak
4-way Manual Adjustment Driver Seat	•	•	•	•	•	•	8-Way
Rear Seat with Head Restraints	-	-	•	•	•	•	•
Floor Mat - Driver only	-	•	-	-	•	-	-
Wildtrak (Floor Mats - Wildtrak)	-	-	-	-	-	-	-
Overhead Console	-	-	•	•	-	•	•
Center Console with Cupholders	•	•	•	•	•	•	•
<b>Audio</b>							
FM/AM Stereo Radio, Single CD/MP3 Player	•	•	•	•	•	•	•
AUX (AUX-in)	-	-	AUX & USB	AUX & USB	•	AUX & USB	AUX & USB
Bluetooth with Voice Control	-	-	•	•	-	•	•
Speakers	6	6	6	6	6	6	6
Large Screen Color Matrix Multi-function Display	•	•	•	•	•	•	•
<b>Safety</b>							
ABS with EBD	•	•	•	•	•	•	•
Rear Window Defrost	•	•	•	•	•	•	•
Front Driver and Passenger Airbags	•	•	•	•	•	•	•
Rear Seatbelt	•	•	•	•	•	•	•
Limited Slip Rear Differential	-	-	•	•	•	•	Rear Locking Differential



# Best-in-class Water Wading Of 80 Cm.



DOUBLECAB 2.2L XLT  
Hi-rider / 4x4.

- 1. Nudge Bar**  
This nudge bar helps protect the front end of the vehicle. Tested to Ford's safety standards, not affected to frontal airbag deployment in case of collision.
- 2. Headlamp guard**  
Enhances the sport appearance, helps protect headlamp from gravel during driving. Not affected to direct of headlight beam.
- 3. Bonnet Protector**  
Helps deflect dirt and bugs from bonnet. Aerodynamic design, reduced wind noise.
- 4. Weather shield**  
Helps deflect rain while opening window to let air flow.
- 5. Snorkel**  
A higher air intake position provides cooler and cleaner air to the engine and helps assist with water crossings over 80 cm.
- 6. Underrail bedliner**  
Moulded for durability, protects body and paint from scratches, enhances exterior appearance.
- 7. Stainless sport bar**  
Enhances the sporty exterior of the vehicle along with high mounted stop lamp.
- 8. 18" Alloy Wheel**  
Enhances the sport exterior of the vehicle. Meets Ford's stringent engineering and safety standards. Recommend using with 265/60R18 tyre.
- 9. Carpet mats**  
These stylish hardwearing mats are easy to remove and clean. Anchor points fix the driver's mat to help prevent movement.

## Accessories

Exterior Styling	XL	XLS	XLT	WILDTRAK
1. Stainless Nudge Bar	A	A	A	A
2. Headlamp Guards	A	A	A	A
3. Snorkel (TDCi engine only)	A	A	A	A
4. Bonnet Protector	A	A	A	A
5. Weather shield	A	A	A	A
6. Chrome outer mirror cover	-	-	S	A
7. Front mud flap	A	A*	S	S
8. Roof rack	A	A	A	-
9. Side Steps Stainless Steel (Hi-Rider and 4x4 model only)	A	S	S	A
10. Grey Side Steps (Hi-Rider and 4x4 model only)	A	A	A	S
11. 18" Alloy Wheels (Hi-Rider and 4x4 model only)	A	A	A	A (2.2L)
12. Stainless sport bar with 3rd brake light	A	A	A	-
13. Underrail bedliner	A	A	A	S

Exterior Styling	XL	XLS	XLT	WILDTRAK
14. Bed rail cover (Double Cab only)	A	A	A	-
15. Spare wheel lock	A	A	A	A
16. Towing bar kit (Hi-Rider and 4x4 model only)	A	A	A	A
17. Silver license plate cover	A	A	A	A
18. Car cover	A	A	A	A
Interior styling and audio connectivity	XL	XLS	XLT	WILDTRAK
19. Carpet floormat	A	A	A	S
20. Side steps Stainless Steel	A	A	A	-
21. Gear Knob – Leather (6-Speed M/T)	A	A	S	-
22. iPod Integration Cable	-	-	-	A
23. Aux Audio Plug in cable	A	A	A	A
24. Driver's grab handle	A	A	A	A
25. Silver Door handles –chrome	A	A	S	A

A = Accessory that can be added at any time. S = Standard. - = Not available.

\* Except Hi-Rider and 4x4 model

